

Weekly Bargain Bulletin **WBB**

September 13, 2019
Edition 2473
www.WeeklyBargainBulletin.com



Randy Glasbergen www.glasbergen.com

"If a 20 minute power nap improves productivity, imagine how much I could get done if you let me sleep 4 hours!"

724 652-7884
Office, leave mess.

724 730-3444
Cell, immed. response

CRIT-R-DONE®

NUISANCE WILDLIFE & PREDATOR CONTROL

767 High Hill Rd., Pulaski, PA 16143



Groundhogs In Your Garden?

Call Us Today!
We will remove those pesky critters
from places you don't want them!
Commercial & Residential Animal Removal

Raccoons In Your Chimney?



Your Dog called and would like a Bath!

\$20⁰⁰ Basic Bath

includes foot pads, nails, ear cleaning,
sanitary cut, bath, condition,
blow dry and brush out

Call for appointment • 724 658-4745
Gift Certificates Available

Peek~A~Boo Pet Grooming

"Now you see a dirty dog...
Now you don't!"
We groom cats, too!

320 Mountainview Rd., 4 minutes from Walmart



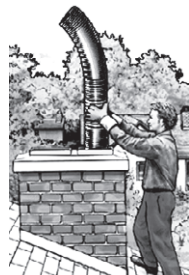
Homecoming Schedule is on page 4

Alex

Call us to schedule
724 652-3400
alexrestoration.com

Restoration and Masonry Repairs

- Brick and Stone
- Tuckpointing
- Caulking
- Stainless Steel Liner



We Powerwash and Seal
Decks, Driveways, and Sidewalks
• Over 35 Years Experience • Free Estimates • PA062502

DAN'S AUTO BODY & REPAIR

130 W. Long Ave., New Castle
724 657-3647

Owner: Daniel McClure

PA State Inspections

- Minor to major accidents
- Insurance estimates
- Brakes
- Exhaust
- Overall paint jobs
- Rust repair
- Tune-ups
- Oil Changes

Will waive deductible, Competitive prices
www.DansAutoBodyRepair.com

E-Z Kleen Car & Van Wash

3342 Wilmington Rd., New Castle, PA 16105
In Field Club Commons Plaza • OPEN 24 / 7
724 651-4066

- >> 2 Brushless Automatic Car Washes
- >> 3 Self-Serve Car Washes
- >> Vacuums, Air >> Pet Wash



Pulaski Flea and Farmers Market

OPEN EVERY THURSDAY
6:00am April - November

Single Space just \$8.00, Pavilion Spaces
Available, Concession Stand Open

SATURDAYS IN SEPTEMBER
Free Setups! (no concession stand)

1/2 mile North of Pulaski, PA • Rte. 551
Pulaski-West Middlesex Rd. 724 598-7885

\$

FOXWOOD AUTO SALVAGE

Buying Junk Cars and Trucks
Call Us Last for Best Price!

- Highest Prices - Paid In Cash!
- Selling Used Parts and Tires
- Quality Parts - Low Prices

24 Hours 724 774-3386



Highest Prices Paid for Junk Vehicles

Free Quotes
Call or Text
724 813-5480

There's Nothing Like a Homecoming!

Whether it's back to your alma-mater or back to your home...
theres no place like home!

Call Us for Quality
Workmanship on Roofing,
Siding, Windows, Gutters,
Decks, Pole Buildings,
and Garages!



Shell

RESTORATION

Free Estimates
Financing Available
Low Payments, 0% Interest
Fully Insured • PA105988

Roofing, Siding, Windows, Gutters and More

800 663-8103

PO Box 325, Grove City
www.ShellRestoration.com

PREFERRED
CONTRACTOR

HOME IMPROVEMENT

- Roofing • Siding
- Soffit and Fascia
- Gutters and Decks
- Exterior Painting
- Metal Roofs
- Weather Damage and Repair

Dan McLaren

References,
Free Estimates;
724 667-6201
or 724 730-0320

PA019211

WBB

We're not new
to social networking.
We've been bringing
people together
since 1972.

GAS LIGHT Manufactured Home Sales

724 658-1000 PA002456

Rte. 108, 1 mile East of New Castle

Retailer of
Commodore
Homes

- Homes
- Parts
- Service
- Propane

Bank Repossession 2017 Commodore

3 bedrooms, 2 baths, with
patio awning and central
air, set up in Gas Light
Village, low payments,
easy financing \$35,900

PROPANE \$13

20 Pound Tank

No Coupon Necessary • Offer Expires 9-30-19

Penn Ohio Roofing & Siding LLC

Roofing • Siding • Windows • Insulation

Your ONLY
GAF Master Elite
Roofing Contractor

Silver Pledge and Golden Pledge
Limited Warranties

724 877-7172 • www.pennohiorc.com

3744 New Castle Rd., West Middlesex, PA 16159 • PA094564



Birthday Bash

This Birthday Only Comes
Around Once A Year

You'll Be Glad
You Shopped

Haney's

Comfort
Living Furniture

Sofa **\$399**

\$318
Power
Recliner

Storewide SALE

**Dinettes • Living Rooms • Sofas
Leather Upholstery • Recliners
Reclining Sofas • Bedrooms
Mattresses from Serta
and other brands
La-Z-Boy • Flexsteel**

\$399
Recliner

SPECIAL SAVINGS

Flexsteel
\$1199
Reclining Sofa
Faux Leather Look

**12 Months
Same As Cash**
See Haney's for details



Refreshments

Downtown New Castle, 32 N. Beaver St.
(Next to Rite Aid) **724 654-7731**
Mon. & Thurs. 10-8; Tues., Wed. & Fri. 10-5;
Sat. 10:30-4:30

Sports Quiz

by Chris Richcreek

1. In 2019, Pittsburgh's Josh Bell became the third player in National League history to have at least 12 doubles and 12 home runs in the same month. Name either of the other two.
2. Name the last male golfer to win the same major three years in a row.
3. How many years went by before the Buffalo Bills returned to the NFL playoffs in the 2017 season?
4. NASCAR's Brad Keselowski, in 2019, became the winningest driver in Team Penske history (60 victories). Who had held the mark?

*****ANSWERS*****

1. Hank Aaron and Frank Robinson.
2. Peter Thomson won the British Open in 1954-56.
3. Eighteen years (last in playoffs in 1999).
4. Mark Donahue, with 59 wins. © King Features

BIBLE TRIVIA

by Wilson Casey

1. Is the book of Joel in the Old or New Testament or neither?
2. What was the name of Samson's father? Noah, Manoah, Jesse, Levi
3. Who wrote the book of Proverbs? Jude, Moses, Solomon, Isaac
4. What village was known as "The City of David"? Nimrod, Aiea, Antioch, Bethlehem

HILLTOP MILLWORK LLC

- CABINETS • MILLWORK
- FINISH CARPENTRY
- WINDOWS & DOORS • INSTALLED

MICHAEL F. CALABRESE

724-657-7435 • mcalabrese1@yahoo.com

Free Estimates Fully Insured PA#142007

18 volt Porter Cable circular saw, reciprocating saw, 2 drills, 2 batteries, battery charger, works perfect, \$50 takes all; 724 614-3278

Dell Latitude laptop, 15.6" screen, Intel High Five CPU, 2.6Ghz, 4 Gig RAM, 160 Gig HD, DVD RW drive \$159; 724 458-1743 Mitch

Neely Bros. Plumbing, L.L.C.
New Construction and Repairs
Drains, Gas & Water Lines, Hot Water Tanks, Electric Drain Cleaning, "No Job Too Small" Great Rates
724 657-1144
PA025841



Harbor Landscape Supply

Colored Mulch
\$23 per yard while supplies last

2226 Ben Franklin Highway, Edinburg (Rte. 422, 5 miles West of New Castle)

Mon.-Sat. 8-5
Sun. Closed
724 658-6160



We will fill your
Propane
20 lb. Tank
\$13.00
no coupon necessary
expires 9-30-19

GRAHAM'S TIRE AND AUTO REPAIR



724-730-9070

- PA State Inspection
- General Auto Repair and Maintenance
- Alignments • Flat Repairs
- New and Used Tires

1701 Highland Ave., New Castle • Mon.-Fri. 8-6, Sat. 8-2

Fun With Words: If Vegetarians eat vegetables, what do Humanitarians eat?

Wrecker Service
Flatbed Service

Randy's

**TOWING
& RECOVERY**

New Castle, PA
724 652-2750



DJ TONY TUNEZ
All Occasion Music
Spinning Top 40,
Country, Oldies,
R&B, Classic Rock,
Rap; 724 730-2009

Wanted: any unwanted fruit from your trees or vegetables from your garden; 724 652-1817 leave message

Bible Trivia Answers

- 1) Old; 2) Manoah;
- 3) Solomon; © King
- 4) Bethlehem Features

Best Stump Grinding

Accepting
Credit Cards
724 312-2672
PA100062



We've Added A New Technician

Who Specializes In
**Volkswagen,
Mercedes & BMW**
*Foreign and Domestic
Auto and Diagnostic
Service Center*

Shuttle Service Available
www.WilsonsAutomotiveInc.com
317 Mahoning Ave., New Castle
Mon.-Fri. 8-5, Sat. 8-Noon • 724 657-8825

VISA MasterCard DISCOVER Key Programming

Whiting Roll-Offs, Inc.

NEW SIZES AVAILABLE!

**Let's Talk
Trash!**

✓ **NO Hidden
Fees!**

**Call Us Now!
724 971-0447**

**Call Us By Noon and We
Will See You This Afternoon!**

10 Yard.....	\$195
12 Yard.....	\$215
15 Yard.....	\$245
20 Yard.....	\$310
30 Yard.....	\$460
40 Yard.....	\$625

Above prices are a
1 week rental.

Need another week?
ADD \$60.00
to above prices!

Now Here's A Tip by JoAnn Derson

• Struggling with your shower cleanliness? Keep a bottle of shower sanitizer and a grout brush in the shower at all times. Use the grout brush if something pops up, and spray shower daily. This should greatly extend the time between deep cleanings.

• Brooms get worn down with use. Be sure to remove clumps of hair and dust bunnies after use, and give it a dip in soapy water or a spray with the hose weekly (not straw brooms, though). Hanging a broom will give it a longer life. © King Features

Got Potholes?

**Screened asphalt
millings for sale**

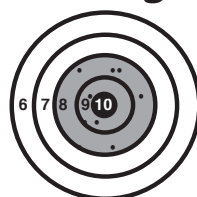


Call Matt
724-944-8075

Yamaha keyboard, Model PSR-520 \$50; Craftsman 12 gal. 5hp Shop Vac \$45; swivel glider rocker & love seat \$80; 724 598-6892

12' trampoline w/net poles but no net, first \$75 takes it; 724 685-9845

*Randall
Guns*
**Always
On Target**



717 OLD
Ellwood-Zelienople
Rd., Ellwood City
724 758-2102
Outside
Ellwood City Area,
Toll Free
1-888-200-9505
Mon.-Fri. Noon-4pm
and 6:30-9:00pm,
Sat. Noon-4pm
rguns@zoominternet.net
www.randallguns.com

TERRIE'S CAR SALES & RENTALS 724 652-1540

- **2006 Subaru**
Outback \$5,995
- **2009 Hyundai**
Sonata \$6,995
- **2008 GMC**
Sierra \$6,995

**Ask about
GUARANTEED
Credit Approved**

WE RENT: Cars,
Vans, & U-Hauls
• Title Service •
• Propane Sales •

**Rte. 18 & Rte. 158
At the Y**
Mon.-Fri. 9-5; Sat. 9-2;
other times by appoint.

WE BUY Cars & Trucks

TRAPPING GEAR:
Everything needed to harvest and prepare all PA fur bearers, over 14 dozen top quality traps, rigged, extra heavy in very good to exc. cond., and much more; not interested in any trades, offers or separating, \$1,250; 724 651-7396 9-13

Neal's Harness SHOP RED WING SHOES



- Shoulder Holsters
- Wallets
- Straw Hats
- House Slippers
- Rain Wear
- Rubber Boots

2213 Heather Heights Rd., New Wilmington, PA 16142

(1/4 mile south of the Cheese Plant on Rte 18) Mon.-Sat. 8am-5pm

TOOL SUPERMARKET: Tool Pickers, Traders, Buyers, Importers, Sellers, Recyclers. New/Used Tools, Machinery and Contractor's Equipment. Woodworking, Metalworking, Mechanics, Industrial, Tradesmen, Hobbyists, Collectors, Antique to Modern/Parts/Rentals/Service/Advice. "Everybody Uses Used Tools." Free Flyer & Used Tool List; call 1 800 783-4766 9-27

William E. Vavrock, CNHP Certified Natural Health Professional

Located Rte. 65, North Sewickley Twp.

By appt. only • 724 312-5635

Natural Help for Optimum Health

*Good Health should be our most important asset.
Why not take charge of your health today.*

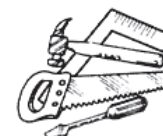
Most people on my whole health program see all their numbers go down: sugar, cholesterol, blood pressure, and weight. The only thing that increases is your energy, quality of sleep, and general overall health improves.



Randy's Roofing and Remodeling

- Free Estimates
- Fully Insured
- PA#125718

724 914-1859



Steel office desk w/pull out shelves \$35; 3 gray steel file cabinets, 4 drawers, \$15 ea.; alum. cross-bed truck toolbox \$200; 724 652-4022

A. O. Smith pump, 1hp, never used \$150; Kohler pump w/220 3 point plug, never used \$150; Hayward sand filter \$50; 3/4hp pool pump \$50; 724 944-8732

New Castle Transit Authority

**We're
Going
Your Way**

**To Field
Club
Commons**



For Schedules, call 724 654-3130, Option 4
or visit www.newcastletransit.org

Medical • Janitorial • Safety • Office Wholesale Supply

Incontinence Supplies

- Attends • Covidien •

Wound Care Supplies



MEDICALSOURCE

1 800 847-2289 724 652-9060

169 Scotland Lane, New Castle • Open 7-4 Mon-Fri.

Western PA Dealership for
TIMBERWOLF™
Wood Processing Equipment.
 Full line of commercial, homeowner,
 and agricultural models.

Model TW-2

- 20 ton, 9 hp
- 9 second cycle
- 4-Way Wedge
- Table Grate
- Log Lift

SALE
\$3,999 + tax
 demo unit

List \$4,885

Hahn's Sales and Service
 211 Sankey Run Rd., Edinburg 724 652-5164
 • Sales • Parts • Service • Chain Sharpening



WOOD FLOORING,
 solid cherry tongue &
 groove, 1,500 square feet
 \$2,100; Duraflame Quick
 Starts for fires, 40 per
 case, \$10 per case; 724
 656-8182 ^{9/20}

Free Sony large screen
 TV, on/off switch needs
 attention, good picture;
 724 656-8182

MIJAVEC FEED & SUPPLY


Nutrena®
Horse Feeds

724 964-8933
 Rte. 422, 1.5 miles East of PA/OH line



A&M Roofing

All Types Roofs Installed
 Rubber Roofs - Gutters - Repairs
724 658-6112
 Winner of "Best of the Best" Roofers
 in New Castle • PA034825




MALE CHIHUAHUA, 7
 weeks old, black & white
 w/ spot of gray, pics avail-
 able upon request \$500;
 call or text after 5pm 724
 614-0388 ^{9/20}

HORSE: 1/2 Arabian,
 1/2 Saddlebred, mare
 bay, 16 years old, with pa-
 pers, \$1,295 obo; 724 530-
 2933 ^{9/20}

J. NESBIT HAULING
422 Landscape Supply, LLC

- Top Soil • Limestone • Gravel
- Fill Dirt • Slag • Sand • Mulch
- Landscape Stone • Polywood Furniture

Pickup & Delivery • Mon.-Fri. 8-5, Sat. 8-4
 3298 US Rte. 422, New Castle, PA • Member BBB
 Hauling: 724 658-4829 • Landscape: 724 924-2400



Thank You!

Words cannot express the gratitude
 we have for all our family and friends
 during this difficult time. We thank
 you for your presence, love, prayers,
 gifts, and cards of encouragement.
 Frank's legacy, the Weekly Bargain
 Bulletin, will continue to serve the
 community, through his children,
 for years to come!

Again, we say "Thank You!"
 The Frank W. Hutchison Sr. Family

MOBILE TECH PA
 20+ Years of Computer Tech/Services

Damon D'Ambrosi
 Computer Tech
 Cell 724 714-3330

mobile_tech_guy@hotmail.com



PUPPIES FOR Sale:
 German and Australian
 Shepherd mix, \$75 each;
 Jonathan S. Byler, 215
 Fayette Neshannock Falls
 Road, Volant, PA 16156

SANTAS: OVER 2,000,
 shown by appt., collectors
 invited, 50¢ to \$1 each; 724
 758-6715 Ellwood City ^{9/27}

33 Acres
for Sale
 Lawrence / Beaver
 Counties;
 412 699-8700

1989 CHEVY S-10 proj-
 ect truck, call for exten-
 sive list of parts \$4,800;
 1976 Kawasaki KZ
 900/1000, Corey Hen-
 dricks built bike \$4,000;
 724 654-3155

CLASSIC 1979 Lincoln
 Continental, white w/ma-
 roon interior, garaged, al-
 most mint, 4 door, origi-
 nal paint, landau top,
 doesn't run, \$1,500 obo;
 724 202-7248 ^{9/20}

HOYT COMPOUND
 bow, 75th Edition, with
 all new accessories, \$350
 obo; Wanted: long tele-
 phone poles, reasonable
 price; 724 651-8786 leave
 message ^{9/20}

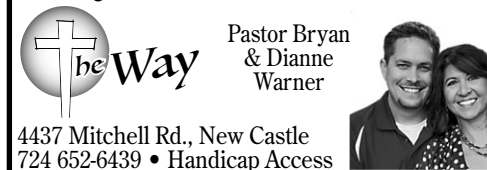
1982 COMMERSE
 mobile home for sale,
 14x70, 2 bedrooms, 2
 baths, handicap ramp, in
 Countryside Estates, Ed-
 inburg; 724 667-4102 ^{10/4}

WILL HAUL away free:
 Unwanted washers, dry-
 ers, stoves, lawn mow-
 ers, metal. We recycle;
 724 658-3395

Join Us Sunday!
The Way Cafe Sunday 9:00-9:45am
Adult Sunday School 9:00am
Morning Worship 10:00am
Youth Group 6pm-7pm, youth age 13-18
Wayside Emmanuel Church

Pastor Bryan & Dianne Warner

4437 Mitchell Rd., New Castle
 724 652-6439 • Handicap Access



N and N Produce
 296 N & N Lane, New Castle, PA 16105
 (across from Marti Park) Mon.-Sat. 9am-6pm
 Open 'til Thanksgiving
 We Accept FMNP Checks

Full Line of Home Grown and Local Produce, Sweet Corn!
All available in small or large quantities

Home-Canned
 Jams and Jellies,
 Pickles, Pickled
 Beets, Sweet and
 Hot Pepper Rings.

Mums, Gourds,
Cornstalks,
Pumpkins,
Straw Bales
and More!

RUGER AMERICAN
 .308 Win. \$300; Win. Mod-
 el 37 .410 and 20 ga., \$275
 each; Ithaca Model 37 12
 ga. \$325; Savage Mod-
 el 340 .30-30, 3x9 scope
 \$295; NIB Vortex Dia-
 mondback, 3.5x10x50,
 with mounts \$200; 724
 944-1825 ^{9/20}

2 Shelves: (1) big 88" tall,
 (1) small 75" tall, \$50 both;
 hay & feed rack, good for
 goats or sheep, 4' wide
 \$175; 724 530-2933

Kelly's Glass Block Windows

Custom Built and Installed
 Quality Work - Reasonable Price

Add Security to Your Home

- Break Resistant •
- Saves Energy •
- Low Maintenance •

PA008459
 120 Frank Way, New Castle 724 654-9491



Call Now for Winter Savings!

Pole Buildings and Garages

PA3031
KNEPP BUILDINGS, INC.

814 382-0392 • www.kneppbuildings.com



HOMEcoming 2019
Festivities are at half-time unless otherwise noted.

•• SEPT. 20 ••
 •Grove City High School -vs- Slippery Rock High
 School, game 7pm, parade 6pm

•• SEPT. 27 ••
 •Beaver Falls -vs- Uniontown, game 7pm
 •Blackhawk -vs- South Fayette, game 7pm
 •Hickory -vs- Grove City High School, game 7pm,
 parade 6pm, crown king 6:30, crown queen half-time
 •Laurel -vs- Our Lady of Sacred Heart, game 7pm,
 parade 5:30pm

•Lincoln -vs- Western Beaver, game 7pm, Court in-
 tro 6:30pm
 •Mercer -vs- Farrell, game 7pm
 •New Brighton -vs- Neshannock, game 7pm, Court
 intro 6:30pm
 •Sharpsville -vs- Lakeview, game 7pm. Wed., Sept.
 25 parade 6:30pm @ Main St., Sharpsville
 •Shenango -vs- Mohawk, game 7pm, parade 6pm
 •Slippery Rock High School -vs- Titusville, game
 7pm
 •Union -vs- Bishop Canevin, game 7pm, parade
 6:15pm
 •West Middlesex -vs- Reynolds, game 7pm, parade 6pm
 •Wilmington -vs- Greenville, game 7pm

HOMEcoming 2019
Festivities are at half-time unless otherwise noted.

•• SEPT. 28 ••
 •Geneva College -vs- Waynesburg University, game
 3pm @ Reeves Field, Homecoming Court 2:30pm

•• OCT. 4 ••
 •Farrell -vs- Cochran, game 7pm, parade 6:15pm
 @ Shenango Valley Urban League
 •Mohawk -vs- Riverside, game 7pm, parade 6pm
 •New Castle -vs- Blackhawk, game 7pm
 •Sharon -vs- Grove City High School, game 7pm,
 parade 6pm

•• OCT. 5 ••
 •Beaver -vs- Ambridge, game 7:30, parade 4pm @
 Main St.
 •Grove City College -vs- Carnegie Mellon, game
 2pm @ Thorn Field, parade 11am Pine & Broad Sts.

•• OCT. 11 ••
 •Neshannock -vs- Freedom, game 7pm, parade 6pm
 •Riverside -vs- Lincoln, game 7pm

•• OCT. 12 ••
 •Slippery Rock University -vs- Indiana University,
 game 2pm @ Mihalik-Thompson Stadium, 10am pa-
 rade - downtown Slippery Rock
 •Westminster College -vs- Grove City College, game
 1pm @ Memorial Field

MIKE'S HYDRAULIC
 Service can repair log
 splitter cylinders, hydrau-
 lic cylinders, and sharp-
 en chain saw chains; 4623
 Perry Highway (Rte. 19),
 Volant, PA; 724 530-7396

TEDDY BEAR puppies,
 Shichon's make the best
 family dogs, great tem-
 peraments that get along
 with other pets, and excel
 with kids, come and
 meet them in person
 with the family, but call
 for pictures and videos
 first, \$650 choice; 724 923-
 3094 ^{9/20}

Always Remember the Giver of
All Gifts - Jesus

PAGLEY CONSTRUCTION



Roofing
Siding
Decks
Additions
Painting: Interior & Exterior
And More

Residential
Commercial
Free Estimates
Fully Insured

Alex Pagley, Jr. 724 657-8313

God Bless and Have a Nice Day

PA041687

FISH TANK w/stand & accessories \$35; Deer Tracker Blood Hunter tracking light \$15; WeatherTech front & rear floorliners for Lincoln MKZ \$60; truck cap \$75; 724 971-7397

2008 FORD Escape, automatic, 4WD, excellent body, new tires, new brakes, new ball joints, needs transmission, \$2,500 or best offer; 724 971-6145

Pozzuto Ground Restoration LLC

- Power Raking
 - Garden Tilling
 - Light Excavation
 - Yard Repair
- 724 944-0479
PA132778

4.3 V-6 Chevy motor, excellent condition, \$400 obo; automatic transmission from 1977 Corvette, excellent condition, \$400 obo; gun cabinet, holds 7 guns, sliding glass doors, with bottom drawer, \$250 obo; 724 654-9231

2008 MERCURY Milan, fully loaded, inspected, 160K, runs excellent, \$2,100 obo; 2006 Impala, leather interior, inspected, dual exhaust, 3900 motor, \$2,000 obo; 724 510-1808

7' DISC, post hole digger & 6' blade, all 3-pt. hitch; Ford Jubilee tractor; cutting torch, oxygen tanks, hose & cart; 12' trailer; two 250 gal. oil tanks; 2 steel wheels w/cleats for Ford tractor; misc. parts; 724 924-2664 ^{9/20}



RHINO LININGS

Spray In
Bed Liners

Starting at \$469



Your New Car
Alternative

Rte. 18, New Castle •
724 654-7741
gocrivelli.com



- Edging & power blowing
- Crack-Filling
- Pot Hole Repairs
- Sand Slurry
- Line Painting

724 614-9004

Sealcoating applied by
Brush...Not Sprayed

Free Estimates • Senior Citizen Discounts
Fully Insured • Residential & Commercial



Whiting Family Foods



For
Award Winning Meats & Cheeses!

Specials Good
Sept. 6 - 19, 2019



BEEF Whole piece
Cut, wrapped, & frozen FREE!

Boneless Strip Loin ... \$5.99 lb.

Beef Eye of Round \$3.49 lb.

Boneless Beef,
top butt for sirloin steak \$4.39 lb.

Beef Peeled Knuckles
for Sirloin Tip Roast..... \$3.49 lb.

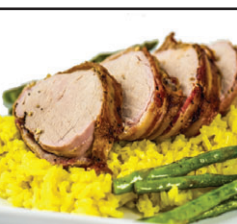


PORK

Pork Butts
2 pack \$1.79 lb.

Boneless Pork Loin. \$1.89 lb.

Whole Pork Loin, Bone In
Cut Free \$29.99



CHICKEN

Individual Boneless Skinless
Chicken Breast 40 lb. \$59.99

Whole Chickens 99¢ lb.

LAMB

Lamb Leg,
Cubed Free \$4.99 lb.



Whiting Family
Vision Care, PC

Abby Whiting, OD
724 946-2620

2055 Mercer-New Wilmington Rd.
New Wilmington, PA



Whiting Family Foods

305 Easy St., Rte. 208, East of
New Wilmington • 724 946-8633

Tues.-Wed. 9-5; Thurs.-Fri. 9-6; Sat. 9-3; Closed Sun. & Mon.

Specials valid Sept. 6-19, 2019 • While supplies last

First come, first served • email: Sam@WhitingWeber.com

Weekly specials and auction dates online: www.whitingweber.com



Perfect for School Lunches

DELI

Muenster Cheese..... \$3.99 lb.

Hot Pepper Cheese..... \$3.99 lb.

Italian Blend Cheese.... \$3.99 lb.

Salami..... \$3.99 lb.

Turkey Breast \$3.99 lb.

Chipped Chopped Ham \$2.99 lb.

Isaly's BBQ Sauce..... \$3.49/Jar



FROZEN

Breaded Haddock \$6.99 lb.

Red Shrimp, 2 lb. bag..... \$14.99 bag

Corn Dogs, 5 lb. bag..... \$12.99 bag

Breaded Mushrooms, 2 lb. \$8.99 bag

Breaded Green Beans, 2 lb. \$6.99

Jalapeno Poppers, 2 lb. \$7.99

Breaded Onion Rings, 2.5 lb. \$8.99

Hard to Recycle Item Event

**Appliances • Batteries • Electronics
Fluorescent Lights • Shoes • Tires
Household Hazardous Wastes**

**Saturday
September 21
10:00am-1:00pm**

**Jefferson Township
Fairgrounds**
7409 Lamor Rd.,
Mercer, PA 16137



Tri-County CleanWays
Serving Butler, Lawrence,
and Mercer Counties
tccleanways@comcast.net



**Recycling/Solid Waste
Department**
recycling@co.lawrence.pa.us
www.co.lawrence.pa.us/recycling
724 658-6925

••• The Following Fees Apply ••• (per item unless noted)

All prices subject to change without notice

Electronics: TVs and Monitors..... 55¢ lb.
Electronics: All Others 35¢ lb.
Computer hard drives are destroyed by shredding

Household Hazardous Wastes:

• Chemicals, paint, oil, pesticides, etc..... \$1.50 lb.
• Mercury containing devices..... \$6.50 lb.
• Propane Tanks..... \$16.00 each

Batteries: Alkaline/Rechargeable 50¢ lb.
Batteries: Lead Acid 25¢ lb.

Fluorescent Lights: Compact \$1.00 each
Fluorescent Lights: 4' and less..... \$1.00 each
Fluorescent Lights: 5' and up..... \$2.00 each
High Intensity Discharge Lights \$2.00 each

Shoes: Wearable pairs only no charge

Appliances: Freon-Containing..... \$25.00 each
Refrigerators, Air Conditioners, Dehumidifiers, etc.
Appliances: All Others \$5.00 each
Washers, Hot Water Tanks, Stoves, etc.

Tires: Passenger Vehicle \$3.00 each
Tires: Light Truck..... \$5.00 each
Tires: On Rims \$10.00 each
Tires: Tractor Trailer..... \$10.00 each
Tires: Tractor Trailer On Rims..... \$20.00 each

No other types of tires can be accepted
Limit - 12 Tires Per Person

••• IMPORTANT •••

- Payment for **Electronics** and **Hazardous Waste** will be made directly to our contractor, Environmental Coordination Services & Recycling (ECS&R). ECS&R accepts cash, check, or credit card.
- Payment for **Appliances** and **Tires** will be made to Tri-County CleanWays (TCC). TCC accepts cash only, day of event. No personal checks will be accepted, no exceptions. TCC will accept business checks, but cannot accept personal checks.

Center Stage Academy of Dance

2040 W. State St.,
Westgate Plaza, Union Twp.

•• Featuring ••
**Sunday Evening
Gymnastic Classes**

***Special Rates: Irish Dance**

Classes Include: *Me and My Shadow
*Creative Movement *Pointe, Ballet & Tap
*Jazz & Hip Hop *Baton *Contemporary
*Competition *Musical Theater

REGISTER NOW!

724 730-5835 - or - 724 658-0771



MALE CHIHUAHUAS:

7 months old, 1 black w/
tan paws, 1 black & white,
pics available upon re-
quest, \$500 each; call or
text after 5pm 724 614-
0388 9/20

1974 CB125 Honda,
4,400 original miles, kept
in garage, \$1,500 obo; 724
652-5994

NEED YOUR gutters
cleaned out? Call me! In-
stant savings \$50; 724 923-
8871 9/13

**CRAFTSMAN CHIP-
PER** Vac, 5hp \$75; Bolens
front tine tiller \$70; riding
mower engine, used parts
& repairs; John Deere
L120 for parts; 724 651-
8115 leave message 9/13



All-Pro
ROLL-OFF SERVICES, INC.

Same Day Service Available!

10 Yard • 13 Yard • 15 Yard
20 Yard • 30 Yard

www.AllProRolloff.com • Senior Discount
Volant, PA • 724 674-1619

2 Kittens: 8 weeks old,
male white w/gray spots,
female gray and orange
w/white paws, ready to
go, wormed, litter trained,
free to good homes; 724
652-3068

YAMAHA ZUMA scooter,
125cc, just under 3,000
miles, asking \$2,000; 724
730-2456 9/20

BALANCE SCALE, cast
iron frame, excellent for
shipping \$50; 724 962-
3531 9/13

PARKER CROSSBOW,
used 1 season, like new,
with everything, target
and broadhead arrows,
sling, cocking rope, quiv-
er, crossbow target, \$450
obo; 724 658-1161 9/13

BRYAN'S AUTO BODY & COLLISION CENTER

441 State Route 18, New Wilmington
Next to Kenneth's Beauty Salon
724 674-1466



**From Rust Work to
Major Collision and Restorations**
All Insurance Work Accepted

IN AN ACCIDENT?

Insist Bryan's Auto Body fixes your car,
where quality comes first.

PRO HOME REPAIRS

Do you need some repair work done in your home?

We will provide you with Over 35 Years of Experience!

View Photos/Videos at

FB.ME/imagineitdone.com

"We Do More Than You Can Imagine"

724 730-5423 • PA116406

2 turkeys, male & female, large cage, access., food \$50; 724 944-2988

Free to good home: Pot Belly Pig, approx. 3-4 mo. old; 724 498-2805



RESIDENTIAL • COMMERCIAL CLEANING

POWER WASHING

Now Offering Roof Cleaning

Houses • Decks • Gutters

Patios • Fences • Sidewalks

RV's • Boats • Semi Trucks

Free Estimates • **724 944-0074**

PA142175 • New Castle

JoJo's Treasures

Silk Flower Arrangements,

New, Used, Vintage Gifts & More

39 S. Jefferson St., New Castle, PA 16101

Mon.-Fri. 10am-7pm, Sat. 10am-8pm

724 654-7439 • jojosbjk@yahoo.com

Smartphone, Android, Boost Mobile prepaid, 4G, Wi-Fi, GPS, looks new, fully functional, wall and car charger, manual, call or text for pics \$50; 724 971-2447

Propane burner hot plate w/hose and gauge \$30; safety gas can \$15; HP docking station w/charger & cord \$20; 19 ton hydraulic bottle jack \$20; 724 581-7019

>>> NIXON <<< Home Improvements

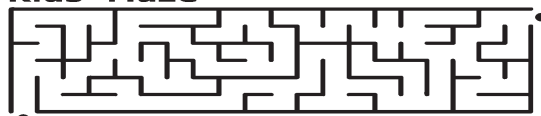
We install vinyl siding, soffit and fascia, replacement windows and doors, roofing and seamless gutter

• Free estimates • Fully insured

724 730-4272 • PA021595

E.P.A. Lead Safe Certified • OSHA Certified

Kids' Maze



©2019 King Features Syndicate, Inc.

TIREX PRESS TIRES AT

533 Taylor St., New Castle (Business Rte. 422) • 724 652-0321
Mon. - Fri. 8-6; Sat. 8-1 • Schedule an appointment online www.tireexpresspa.com

Brand	Description	Size	Each	For 2	For 4
BFGoodrich	Rugged Terrain OWL	P245/70R17	\$85.00	\$170.00	\$340.00
Michelin	Primacy	215/45R17	\$75.00	\$150.00	\$300.00
Michelin	LTX M/S2	P245/75R17	\$88.00	\$176.00	\$352.00
Michelin	Energy Saver	P225/65R17	\$121.00	\$242.00	\$484.00
Michelin	Primacy XC	P275/65R18	\$108.00	\$216.00	\$432.00
Kenda	KR17	215/55R17	\$59.00	\$118.00	\$236.00
Solar	4XS+	215/70R15	\$49.00	\$98.00	\$196.00
Kenda	KR17	P205/55R16	\$49.00	\$98.00	\$196.00
Kenda	KR17	P215/60R16	\$51.00	\$102.00	\$204.00
Kenda	KR17	P225/65R17	\$63.00	\$126.00	\$252.00
Kenda	KR17	P215/60R16	\$52.00	\$104.00	\$208.00
Carlise	Ultra CRT	ST225/75R15 E	\$61.00	\$122.00	\$244.00
Kenda	KR17	P195/65R15	\$44.00	\$88.00	\$176.00
Kenda	KR17	P215/55R17	\$60.00	\$120.00	\$240.00
Kenda	KR17	P225/50R17	\$65.00	\$130.00	\$260.00
Kenda	KR17	P225/55R17	\$63.00	\$126.00	\$252.00
Kenda	KR17	P215/55R17	\$59.00	\$118.00	\$236.00
Crosswind	HP010	P195/65R15	\$42.00	\$84.00	\$168.00
Firestone	FT140	P205/55R16	\$65.00	\$130.00	\$260.00
Bridgestone	R265 V Steel	LT245/75R16 E	\$110.00	\$220.00	\$440.00
Kenda	KR205	215/55R18	\$78.00	\$156.00	\$312.00
Hankook	Kinergy GT	245/45R19	\$99.00	\$198.00	\$396.00
Pirelli	P Zero Allseason	245/40R19	\$119.00	\$238.00	\$476.00



BLOWOUT PRICES

Cash And Carry Prices For 1, 2, or 4 Tires

..... While They Last

Installation - additional \$15 per tire



Affordable, Honest Auto Repair Specialists!

Conventional Oil Change

Up to 5 quarts **\$5 OFF**
Oil Filter Extra

Coupon Exp. Sept. 30, 2019



Taylor St., New Castle 724 652-0321

Synthetic Blend Oil Change

Up to 5 quarts **\$10 OFF**
Oil Filter Extra

Coupon Exp. Sept. 30, 2019



Taylor St., New Castle 724 652-0321

Full Synthetic Oil Change

Up to 5 quarts **\$10 OFF**
Oil Filter Extra

Coupon Exp. Sept. 30, 2019



Taylor St., New Castle 724 652-0321

PA State Inspection

Includes window sticker with passing inspection **\$5 OFF**

Coupon Exp. Sept. 30, 2019



Taylor St., New Castle 724 652-0321

Alignment Diagnostic

Check 4 wheel Alignment and recommend service if necessary **FREE**

Coupon Exp. Sept. 30, 2019



Taylor St., New Castle 724 652-0321

4 Wheel Alignment

Precision 4 wheel alignment and balance all 4 tires **\$80**

Coupon Exp. Sept. 30, 2019



Taylor St., New Castle 724 652-0321

Oktoberfest

is Here!

Where: Cascade Park
E. Washington St., New Castle, PA

When: Saturday, Sept. 14, 1pm to 10pm
Sunday, Sept. 15, 1pm to 8pm

Presented by: The Eintracht German Club

*Celebrate Oktoberfest and
have a Getränk! Ein Prosit!*

Entertainment All Day
Including Performances By:

- **Mädel Jäger**
(German Band from Pittsburgh)
- **The Grkman Duo**
- **The Barrons**
- **Fred Ziwich Band**
- **German Dance Group**
- **Eintracht Maennerchor / Kinderchor**



Free Admission

Parking \$3.00

**125th Anniversary
Souvenir
Glass Mug \$5.00**

For more information contact
The **Eintracht Society**
at **724 652-7221**



**Neshannock Twp.
Police Department**
TIP LINE
Call or Text
724 761-4445
Non-Emergency Use Only

2002 JAYCO Quest pop-up camper, air conditioning, 3-way refrigerator, 20' 6" open, sleeps 8, closed for a few years, if mouse damage \$750, if not \$1,450; 724 944-4269

BUYING GUITARS, saxophones, accordions, old amps, pedals, drums, horns, synthesizers, electronics/tubes, banjos, violins, most older musical instruments. Local pick up, call Mike 330 367-7100 9/20

BLACK WALNUT firewood, \$70 a face cord; 724 535-3054 Wampum 9/13

Jim's Painting & Remodeling

Interior/Exterior Painting, Carpentry, Electrical, Plumbing & More • Insured
• Free Estimates
724 714-8209
Credit Cards Accepted
PA120084

MUNDO'S AUTO & CYCLE Detail & Sales, Inc.

2425 River Road, Ellwood City, PA 16117
724 758-2106 or 724 758-2012
Website: MundosAuto.com

10% Discount for ALL Veterans

Air Conditioning Upgrade
\$99.99 + tax

State Inspections \$37.50 + tax
Motorcycle \$21.99 + tax
Trailer \$29.99 + tax

State Emissions \$37.50 + tax

**Both Inspection
Discount** \$59.99 + tax

Brakes and Rotor Special
(front or rear):

Car \$159.99 + tax
1/2 Ton Truck or SUV \$209.99 + tax

Oil Change Special (up to 5 quarts):
Conventional Oil \$29.99 + tax
Synthetic Oil \$39.99 + tax

**We Do
All Types of
Mechanical
and Electrical
Work**

**Fluid Film
Undercoating**
\$129.99
for all types
of vehicles



Mon.-Fri. 9am-5pm • Credit Cards Accepted

GREENVILLE TOOL Co.: We sell new and refurbished American made hand tools, Mon.-Wed. 9:30am-5pm, Thurs. 10am-6pm, Sat. 10am-4pm; 171 Main St., Greenville, 724 588-8665 9/20

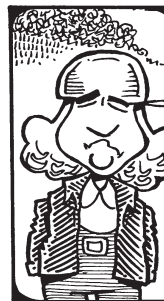
2 lady's gold rings, s-10
\$8; 724 761-6097

Winters Concrete and Construction

- Addition & Garage Foundations • Vinyl Siding
 - Metal Roofs • Decks • Doors • Windows
 - Chimney Repair • All Concrete Work
- Experienced • **724 815-9396** PA122792

See the Homecoming Schedule on Page 4 of the Weekly Bargain Bulletin. R.I.P. Frank Hutchison, Sr. Jan. 16, 1937 - Aug. 30, 2019 Your Legacy Lives On.

R.F.D.



Amber Waves

I'M SUPPOSED TO WRITE A PAPER ABOUT DINOSAURS.



THE PROBLEM IS OUR INTERNET IS NOT WORKING. CAN YOU HELP ME OUT?



OK, WHO WANTS TO GO FIRST AND SHARE THEIR PAPER WITH THE CLASS?



ACCORDING TO MY SOURCE THE DINOSAURS DIED OUT BECAUSE THEY SMOKED.



Gold Mind Jewelers



WE PAY CASH

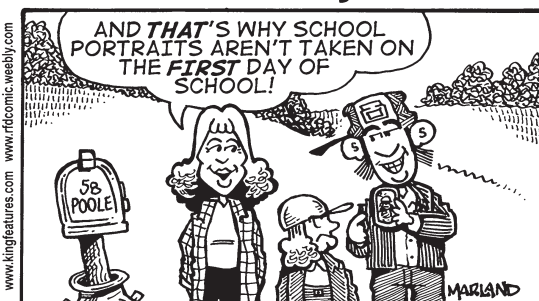
- Coins • Estates
- Diamonds • Class Rings
- Gold Jewelry • Sterling Silver
- Broken Chains • Pocket Watches

Repairs Done on Premises

122 E. State St., Sharon, PA • 724 342-5411
Mark L. Multari - Owner • Tibor Egetoe, Jr. - Jeweler



by Mike Marland



by Dave T. Phipps

DutchCraft Const. LLC

~ Former Amish Builders ~
Chris Byler - Owner / Sales

• Pole Barns • Garages
• Roofing • Siding • Windows

724-202-9747 or 216-469-0322 cell
PA 146758 OH 4245-41

Gas furnace w/blower, good working cond. \$125; ventless gas heater, cost new \$200, asking \$90; stone siding, never used, 1 box \$50; 8' garage door \$40; 724 977-4760

Rear Grass/leaf bagger for Cub Cadet/MTC/etc., paid \$399, only \$175; 724 971-7397

Jones Electric & Residential

- Repairs
- Home Services
- Lighting • Installations • Etc.

Phone: 724 944-5053
Email: DaveJones9@hotmail.com
1505 Patterson Rd., New Castle, PA 16101

1999 HONDA Civic, runs good, inspected, \$1,500 obo; 1999 Caravan, runs good, inspected, 170K, \$1,500 obo; 2008 G6, runs good, inspected, \$2,000 obo; 724 971-8869

1999 CADILLAC Eldorado, inspected, 80,000 original miles, \$1,950 obo; 2005 Escalade, inspected, motor replaced, around 150K on used motor, \$3,700 obo; 724 510-1808

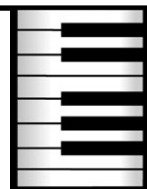
13' frame only for Jump King trampoline, \$30 or best offer; 724 656-8235

HOUSE FOR Sale: Edinburg, \$22,000 negotiable; 843 756-3384 9/20

DiGiorgi Piano Service

Piano Tuning and Service Since 1984

Call Loren DiGiorgi at 724 654-5812 or visit www.digiorgipiano.com



Night At The Races

Saturday, September 21st,
Hosted by New Galilee
CommUNITY Foundation
& North Western EMS



Doors open 6pm • Races Start 7pm
at New Galilee CommUNITY Event Center
\$15.00 includes horse, food, & beverage
Tickets at Tammy's Bakery or call 724 888-6817

New Galilee CommUNITY Hall

Rte. 168, New Galilee
For more information Call Patty 724 987-3096

ROZZI BUILDERS

- Concrete Work
- Block Work
- Carpentry
- Basements
- Patios
- Garages
- Additions

724 652-2640

Free Estimates • Fully Insured



COMPLETE LIVING room set, computer desk, black glass top stove, very reasonable; 407 738-6925 Florida number, but I am in New Castle

Wanted: Junk VEHICLES

must have title, call last for best price!
724 657-3692

ProLine Pest Control, LLC

Commercial and Residential
Preventative and Curative of Seasonal Insects and Pests

Stink Bugs, Spiders, Ants, Millipedes, etc.
724 944-0642
License #BU13692 • Insured



GASOLINE TROY-BILT electric start generator, never used, 13hp motor, 13,500 starting watts, 7,550 watts running, \$700 or best reasonable offer; 724 856-2191 9/20

1994 SKYLINE mobile home for sale, 14x70, 3 bedrooms, 1 bath, in Countryside Estates, Edinburg; 724 667-4102 10/4

PEDAL CAR, all chrome, handmade, paid \$400, sell \$250; 724 530-2933 9/20

2005 TOYOTA RAV4, FWD, approx. 88,000 miles, newer exhaust, good condition, \$4,895 obo; call or text 724 856-2810 9/20

PETERSON Property Management

Summer and Fall Services

• Mowing • Debris Removal
• Power Washing • Gutter Cleaning, etc.
Rates starting at only \$45.00
prices will vary by service and severity of servicing
Call Today for Free Estimates!
724 614-2153 • PA148402

SEASONED FIREWOOD, \$90 a face cord, 18"x4"x8' delivered; 724 556-9028 if no answer, please leave message 9/27

Wanted: Paying Cash for Unwanted Junk Vehicles

Buying:
Catalytic Convertors, Batteries & Aluminum Wheels
724 752-3320

WANTED: GERMAN Steins, Ceramarte Brazilian steins or other steins, buy, sell, or trade; 724 900-6512 Tom 9/13

GARY MUSGUIRE LANDSCAPING

- DUMP WORK • LOCAL HAULING
- POWER RAKE • REMOVE ROCKS
- YARD FINISHING • SEEDING • REPAIR DITCHES
- PLOW & DISK LOTS OR GARDENS
- MOW LOTS & FIELDS
- TRACTOR & HI-LIFT
- ROTOTILLER



724-924-2749

Life Changing Ministries



Pastor Bill and Michelle Rupert
2929 Mercer Rd.,
Nesh. Twp.
724 652-4090



Sunday
9:30am: Sunday School
10:30am: Morning Worship,
Nursery, Junior Church
Thursday
6:00pm: Thurs. Youth Group

BLUE HEELER puppies for sale: 8 weeks, vet checked, first shots, wormed, \$225 each; 724 972-3667 9/20

STEELERS vs COLTS, Sunday, November 3rd, two tickets, lower level, Section 107, Row FF, \$300 for both obo; 724 674-2963 9/13

Peterson's Tree & Leaf Removal

PA097707

Selling Cord Wood

Bucket Truck Service • Free Estimates
Fully Insured • Will Beat Any Written Bids
Call Jim 412 596-1823 • New Castle Area
petersonstreeandleafservices@gmail.com

Free Star with Every Building

- 28'x35'x10'
- 1 Man Door
- 40 Year Siding & Roofing
- 3 9'x8' Doors
- 12" Overhang, All 4 sides
- Concrete Floor
- Other Sizes Available
- Guaranteed Lowest Prices!**



724 699-3315
Call before you build.
Coblentz Builders

KENMORE ELITE computerized electric clothes dryer, white, with pedestal drawer underneath, looks new, works great, asking \$300; also extra pedestal \$100; 724 964-8554 9/20

TIRES: (2) Michelin Latitude, 245/55-R19, \$65; (2) Toyo 245/65-R17 \$40; Honda Odyssey locking roof crossbars, used once \$50; small pet carrier \$15; 724 658-0352 9/13

Yard Storage Sheds

- All Wood Construction • Choice of Colors
- Completely Assembled and Painted
- Quality Materials and Workmanship
- Delivered To Your Site- Ready to Use

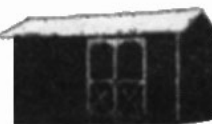
Ervin U. Byler

802 Orchard Rd.
Mercer, PA 16137

North of New Wilmington on Rte. 158 to Twin Bridges, Orchard Rd., 1st road to left past Auction Barn, go 4 miles. (1/4 mile beyond I-80)



Standard Barn



Salt Box

Leckwart Farm Market

Rte. 18 South, 1 mi. South of Mahoningtown



Home Grown PEPPERS

Fryers, Bells, Hot & Sweet Banana

***Tomatoes *Cukes *Eggplant**
***Sweet Corn *Honey *Cantaloupe**
***Watermelon** - in season

Mon.-Fri. 9-6; Sat. & Sun. 9-4
724 652-3787



COMMUNITY HAPPENINGS

SEPT. 13: Veterans Stand Down, 12noon-3pm, for homeless veterans, service members & families, free medical screenings, light meal, org. with resource info, entertainment; Cascade Park, 1928 E. Washington St., New Castle

SEPT. 13: Bingo 7:00pm, All you can play Master Set \$20 - Progressive Jackpot 51# \$400, Consolation \$200! Pig \$417+; Hog \$832+; New Beanie Baby Raffle. Sponsor: DSV; Sallmen's Social Center, 110 E. Division St., New Castle, 724 654-5221, 724 654-6403, We're on Facebook!

SEPT. 13-14-15: Cook Out, 12noon-4pm, hamburgers, hot dogs, baked beans, salads: pasta, macaroni, potato; \$5 plate includes 1 meat and 2 sides, extra item add \$2; a portion of the proceeds benefits Children's Hospital of Pittsburgh; Love's, 1011 New Castle Rd., Slippery Rock 9-13

SEPT. 14: Sausage & Pancake Breakfast, 7am-10am, adults \$7, children \$5, walk-ins welcome; Life Changing Ministries, 2929 Mercer Rd., New Castle; info 724 652-0215 9-13

SEPT. 14: Takeout Soup Sale, 11am-2pm, \$7.00 quart, Soups: Vegetarian Vegetable, Broccoli Cheese, Stuffed Pepper; Liberty Grange, 3067 Harlansburg Rd., New Castle; pre-orders 724 674-2621 or 724 654-0379 9-13

SEPT. 14: Fall Kick-Off, 6:00-10:00pm, WLDJ 107.5 Hall of Fame radio station, Gideon speaker, Glenn Steinheiser will talk about the Positive Biblical Effect on the World, all ages welcome; Underground Refuge, First Church of God, 12 W. Euclid Ave., New Castle; 724 658-3951 visit us on Facebook

SEPT. 14: 2nd Saturday Concert, 6:30pm refreshments, 7pm LifeGate Band performing Christian music; Friendship Community Center, 886 New Castle Rd., Slippery Rock

SEPT. 15: New Fall schedule, 9:30 Sunday School, 10:30 Morning Worship, Wednesday 6:30 Bible Study; Keys To The Kingdom Church, 3692 Old Pittsburgh Rd., New Castle

SEPT. 15 and 22: Fusion! Community wide youth group, 6pm-8pm, snack counter, games, lesson, fun, 6th-12th grades, sponsor: LCYM; @ Sankey Center, 125 W. Grant St., New Castle

SEPT. 15: Back-To-Church Sunday, 1-4pm, food, fun, games, prizes, all free, all ages; Evangel Community Church, 1530 Harlansburg Rd., New Castle, info 724 510-5568

SEPT. 15: Community Celebration, 10:45am, honoring Police & Fire Fighters; Evangel Community Church, 1530 Harlansburg Rd., New Castle 16101; 724 652-4616

SEPT. 17: DivorceCare, Divorce recovery support group, "Find Help, Discover Hope, Experience Healing through DivorceCare", 6:30-8:15pm, free registration, workbook provided, First Baptist Church, 984 W. Maitland Ln., New Castle; 724 658-2507 9-20

SEPT. 17-18-19: Children's Miracle Network "Jail", 12noon-3pm daily, help to bail out Jeff Abrams, all proceeds benefit Children's Hospital of Pittsburgh; 1011 New Castle Rd., Slippery Rock

SEPT. 18: U.S. Air Force Birthday (09-18-1947)

SEPT. 20: Wool Applique Flower Class, 12:30pm, kit \$10, bring your scissors, spon. Library Stitchers; New Castle Public Library, 207 E. North St., New Castle; Reservations 724 654-6376

SEPT. 21: Fall Craft Show, 9am-2pm, food, prizes, farmhouse picks, wood art, jewelry, baby items & much more, First United Methodist Church, 416 Crescent Ave., Ellwood City; for details call Kathleen 724 971-0965 9-20

SEPT. 21: Fall Fest, 9am-1pm, homemade soup, bake sale, craft tables, vendor space still available; Wurtemburg Presbyterian Church, 291 Wurtemburg Rd., Ellwood City; 724 758-6785 9-20

SEPT. 21: All You Can Eat Breakfast, 8am-11am, adults \$9, children 8 & under \$6, benefits American Legion Post 749, Wampum American Legion, 436 Beaver St., Wampum 9-20

SEPT. 21: 5K, benefits Students for Charity, 9am, Falconi Field, behind Farrell High School, register: runsignup.com

SEPT. 22: Cavatelli Dinner, benefits St. Vitus School, 11am-5pm, Adult \$10, child \$5, dine in, take out, RSVP 724 654-9297, walk-ins welcome; Fabri Hall, 915 S. Jefferson St., New Castle

SEPT. 25: Annual Auction and Stuffed Pork Chop Dinner, Dinner 5pm-7pm, adult \$10, child 5-12 \$6, under 5 free; Auction 7pm: quilt, crafts, produce, pork, baked goods, apple butter, cider. Door prizes; Mahoning Valley Grange, 1208 Skyhill Rd., Edinburg, 724 652-5164, 724 654-2062 9-20

SEPT. 29: Benefit Spaghetti Dinner for Brett Bessell, 12noon-6pm, adult \$10, child 5-12 \$5, 4 & under free, Tickets: 330 402-7078, 330 402-5786 or at door; 50/50, raffles, bake sale, Chinese Auction; Brownstone Banquet Hall, 50 Struthers-Coitsville Rd., Youngstown

OCT. 5: Saturday Flea Market, 9am-1pm, lunch available; Croton United Methodist Church, 910 Croton Ave., New Castle

OCT. 6: North Beaver VFD Braised Steak Dinner, Sunday 11:30am-1:30pm, adult \$13, kids 6-12 \$6.50, 5 and under free, takeouts available; 969 Mt. Jackson Rd., New Castle 16102 10-4

Note: Paid events are listed first. Free events are listed by date as space permits.

Weekly Bargain Bulletin

1576 Sunrise Dr.
New Castle, PA 16105

Business Office/Display Ads: 724 654-5529

\$200 or Less Automated Line: 724 654-4557

Website: www.WeeklyBargainBulletin.com

Office Hours: Mon. 9am-6pm; Tues. & Wed. 9am-5pm;

Thurs. by appt.; Fri., Sat., Sun. Closed

Hour Changes/Early deadlines likely around holidays

Covering Lawrence, parts of Butler, Beaver and Mercer Counties in Western Pennsylvania every Friday...since 1972!

LINE AD ADVERTISING DIRECTIONS

Mail ad in or Call ad in. For our records, all ads MUST include your name, address and phone number for ad to be printed. Ads received without this information will not be printed. Ad blank for convenience.

Tuesday Ad Deadlines: Prepaid/Business 5pm, \$200 or Less 12noon • Ad Blank - 1 word per space

• Phone number = 1 word • Price = 1 word Prepaid Ads Only: • Website/Email = 4 words each

PAYMENT: Cash - any amount, **check/money order - \$10.00 or more only** (amounts under \$10.00 will not be accepted); Visa, MasterCard, Discover, debit cards - minimum charge \$6.00. All over-the-phone ads taken only with debit/credit card payment. (Sorry - no ads accepted Wednesday 9am-2:30pm)

YARD / GARAGE SALES (YS) Line Ads

• 1-25 words: \$6.00/week Prepaid, Over 25 words: additional 25¢ per word

• Ad info. MUST include mailing address, date(s) and time(s) of sale

\$6.00 PREPAID LINE ADS - Business Office 724 654-5529

• Selling items valued over \$200, prices listed optional

• This includes Hiring, Rental, All Service Work (PA HIC#), Business, Home Business, Shoots, Notices, Animal Selling, Wanting multiple or general items for personal collection, Selling multiples of same item ongoing sales, barter/trade over \$200 value, etc. ***Wanting/Selling:** Firewood, Firearms, Parts, Tires, Vehicles/Motorcycles/4-Wheelers/anything with an engine

• **Community Happenings:** All events requiring money (selling) Including nonprofit/church fundraiser, dinner, craft fair, etc., must include date, time, location

• 1-25 words: \$6.00/week Prepaid, Over 25 words: additional 25¢ per word

\$200 OR LESS LINE ADS - Automated Line 724 654-4557

• All items MUST be listed with a selling price

• Selling 3 (three) items per edition, each priced at \$200 or less, 25 words or less, longer ads will be edited. We run additional ads, as can, on a space available basis only.

• Giving away items free of charge / Wanting a specific item*

• **Community Happenings:** Events FREE of charge/open to the community (no selling) Listing in paper as often as can until event date, longer ads will be edited, must include date, time, location

REFUND POLICY: WBB Advertising In-House Credit (valid on future ads) is issued, in full, for line ads and display ads only when cancelled before our deadline. Cash, check, debit/credit card refunds are subject to a \$2.00 Service Fee.



The Weekly Bargain Bulletin, Inc. reserves the right to review all material submitted for publication, and to reject any material, in whole or part, which the Weekly Bargain Bulletin, Inc. in its sole opinion, deems inappropriate for publication. We assume no financial responsibility for any typographical errors in any advertisement, but will reprint that portion of an ad in which an error occurs.



WBB Mail-In Ad Blank Print your ad, One Word Per Space, the last word is the phone number (not listed in YS). (Include your name/address for our records) Choose ad classification (See directions above) Paid ad - include number of weeks to print ad (**\$6.00 min. for 1 edition**). Mail completed ad blank (or ad written on separate sheet of paper) with payment to: Weekly Bargain Bulletin, 1576 Sunrise Dr., New Castle, PA 16105 (NO checks or money orders accepted in amounts under \$10.00)

_____ . (end of \$200 or less/\$6.00 Ad) + 25¢/word for additional words, paid ads only.

_____+25¢_____+25¢_____+25¢_____+25¢

Name _____

Address _____

State/Zip _____ Contact Phone# _____

_____ \$200 or less _____ \$6.00 Ad _____ YS _____ CH _____ Rental _____ Hiring _____ # weeks \$ _____

DISABILITY LEGAL CLINIC



Attorney
Pamela J. Miller

If You've Been
**Denied Social Security
Disability Benefits, Call or
Stop in for a Free Consultation.**
724 656-1555

**CARLSON
LYNCH**

ATTORNEYS-AT-LAW
36 N. Jefferson St.
New Castle

**NO
Recovery
NO Fee***

*Costs of Litigation
Still Apply

**the
GroundsGuys®** **Landscape/
Lawn Care
Services**

"We know you're busy, let us do the work for you"

- String Trimming
- Lawn Mowing • Edging
- Shrub/Hedge Trimming
- Seasonal Clean Up
- Mulch • Decorative Stone
- Bed Creation/Redefining/Maintenance

**Retaining
Walls
Patios**

724 766-6781 PA126771
www.GroundsGuys.com/ellwood-city

1988 JEEP Comanche pickup, 5 speed, 6 cylinder, needs some work \$1,495; 724 530-2933 9/20

SHELVING FOR sale: grocery island type, 6 sections \$150; 724 962-3531 9/13

WANTED: HUNTING rifles, any caliber; also wanted: shotguns; 724 652-5964 10/4

LG portable air cond., ex. cond. \$100; 724 453-2984

Bill's Plumbing and Electrical Service

Repairs and New Installations

Plumbing

- Sewers
- Water Lines
- Gas Lines



Electrical

- New Services
- All Types of
Electrical Repairs

Bill Ingram 724 656-1311 724 651-8567

Insured
Senior Citizen Discount
PA035574

**WE ALSO REMODEL
kitchens, baths,
basements, etc.**

ZELIC'S Sewer and Drain Company

- Gas Line and Water Line Installation
- Septic Tank and Sewer
Repair and Location
- Hot Water Tank Installation
- Excavating / Grading
- Dump Truck Services
- Plumbing
- 24 Hour Service
- Free Estimates

724 847-7233
Koppel, PA

**Backflow
Water
Valve
Certified**

PA059306

Antique end table \$15; large dresser w/drawers \$30; large mirror \$10; desk \$20; large microwave \$15; boat seat \$5; lamp \$3; wooden bookcase \$20; 724 202-9515 leave message

BRAND NEW B/F Go-drich Trail T/A tire, LT245/75R-17, on steel eight hole rim \$60; 724 652-8094

CRAFTSMAN SAWS, 12" band saw/sander on legs, 10" steel table saw on legs, 27"x48" table, bench radial arm saw, \$75 ea., \$200 for all; 724 901-7142

I-beam, 15'4"l, 7"x7"x1/2" \$50; 724 658-2465

GRACELAND CEME-TERY: 2 plots in beautiful area, Devotion Section 25C, graves 3 & 4, value \$1,200, sell \$750; 724 667-8370 9/27

CABOOSE STOVE from Union Railroad, #29 cast iron, good for heating camp or garage, great shape, best offer; 724 730-3702 9/13

Ren-Pro, LLC
**Two Services...
One Trusted Name!**

Professional Renovations

- Roofing • Windows
 - Siding
- 724 658-8045**

Hauling

- Shingles • Trash
 - Clean Up • Stone
- You Load... I'll Drive.
724 730-3503

Jack Mentzer
PA026401

2006 COBALT, blue, good condition, inspected, \$2,695; 2006 Cobalt, gray, inspected, good condition \$2,695; 724 698-3818 9/13

JOE'S GUTTER Clean-ing, one story house and trailer window cleaning, grass cutting, scrap metal hauling; 724 614-4559 Joe 9/13

PRAXAIR

Making our planet more productive

- Welding and Cutting Gasses • Welding Supplies
- Safety Supplies, Gloves, and Glasses
- Business Delivery Available
- Dedicated Sales Staff Willing to Meet at Your Location

IT'S FOOTBALL SEASON!

5 lb CO₂ Cartridge Exchange

For Your Beverage Dispenser



\$12

Plus Tax and Hazmat Fee
Thru Sept. 30, 2019

181 Columbus Dr. (Rte. 422
Butler Rd. Next to the Villa)
New Castle, PA

724 658-4591 • Mon.-Fri. 8-4:30



**We're working on a single vision:
To be the best performing industrial gases company in the world.**



**NORM'S
ROOFING**

Specializing in

- Metal Roofs • Siding
- Decks • Garages

Free Estimates • PA6798426

814 282-1264

RIFLE FOR sale: Winchester Model 94AE, caliber 307, lever action, very good condition, straight stock, 1/2 length magazine, scoped, rare \$975; 724 962-6068 9/13

WANTED: TIRE and rim, P245/70R-16, fits 2002 Toyota Truck; 724 683-7017

FREE: MANURE from horse, Neshannock Twp., free loading with appointment: 724 944-7100 Run



**Need a Break
and Some Cash?**

- Home Improvement • Bill Consolidation
- Payday Loans • Auto Loans • Vacation Loans

**Fast, Friendly Service
Offering you that personal touch**

Mahoning Consumer Discount Co.

Independently Owned and Operated Established 1925
Suzanne Rearick, Manager
2418 Wilmington Rd., New Castle 724 658-8888

T&K Auto Repair

- Computer Diagnostics
- Tire Mounting & Repair • Tune-Up
- Suspension • Exhaust
- Brakes • A/C Repair

1705 Eastbrook Rd.,
New Castle, PA
Behind Rich & Freed Auto Parts
Mon.-Fri. 9-5, Sat. by appt.
724 614-7042
724 674-8854

PA State Inspection
Motorcycles • Cars • Trucks • Trailers

Antique small dark dresser, good cond. \$40; 6 qts. brand new Dextron 3 transmission fluid, \$15 takes all; blanket trunk, very nice inside \$10; 3 Jeep plastic doors, \$10 takes all; 724 714-8067

2 rocking chairs, \$10 ea.; 2 lg. wire dog crates, 42"x28"x30", \$35 ea.; sm. plug in ceiling light \$25; 724 654-8070

Free to good homes: 2 sweet kittens; 724 652-6498

**A Debt Relief Agency
for Over 20 Years!**

BANKRUPTCY
Chapter 7 or 13

Reasonable Fees • Good, Friendly Service
Save Your House! Stop Creditor Calls!

Butler County Attorney
Dai Rosenblum, Esq.
Free Consultation • **724 287-5300**

2 like new window air conditioners, 5,000 BTU, \$75 ea.; 724 510-4613

Amana washing machine \$100; Maytag elect. dryer \$100; 724 535-4421

15' alum. canoe, used but never abused, \$150 firm; 724 699-1101

Wanted: full or queen size bed frame, free or reas.; 724 730-8109

•• Now at 2 Locations ••
M-Tu-Sat., 9:15am-5pm; W-Th-F, 9:15-8pm
Every other Sun. by Appt. 12:30-5pm

ERIN OWLS
NOTARY

- Licensing
- T-Plates
- Titles
- Motor Vehicles
- Trailers
- ATVs
- Boats
- Snowmobiles

•New Castle: 1103 Sunny Ave.
corner of Atlantic Ave., New Castle
724 658-2931 or 724 971-1310

•Erin Owls II Is Now Online!
118 Elmwood St., New Castle, PA 16101
724 598-1845

We accept   

Sorry - No personal checks accepted

Hard to Recycle Item Event

**Saturday,
September 28**
10:00am-1:00pm

**Lawrence County
Fairgrounds**

464 Midway Rd., New Castle, PA 16101

- Appliances
- Batteries
- Electronics
- Fluorescent Lights
- Household Hazardous Wastes
- Shoes
- Tires

••• IMPORTANT •••

•Payment for **Electronics** and **Hazardous Waste** will be made directly to our contractor, Environmental Coordination Services & Recycling (ECS&R). **ECS&R accepts: cash, check, or credit card.**

•Payment for **Appliances** and **Tires** will be made to Tri-County CleanWays (TCC). **TCC accepts cash only, day of event.**
No personal checks will be accepted, **no exceptions.**
TCC will accept business checks, but cannot accept personal checks.

Acceptable Chemicals

Aerosols - Flammable
Aerosols - Paints
Aerosols - Poisons
Ammonia
Antifreeze
Arts & Crafts Supplies
Batteries
Brake Fluid
Creosote
Degreasers
Drain Cleaners
Dry Cleaning Fluids
Electronics
Engine & Radiator Flushes
Fertilizers
Fluorescent tubes/lights
Herbicides
Insect Sprays
Kerosene

Latex Paint
Metal Polish
Moth Balls
Muriatic Acid
Mercury
Oil-Based Paints
Old Chemistry Sets
Oven Cleaners
Paint Thinner
Pesticides
Photography Chemicals
Pool Chemicals
Propane Tanks
Radiator Cleaners
Rodent Poisons
Rust Inhibitors
Solvents
Transmission Fluids
Wood Preservatives



**Recycling/Solid Waste
Department**
recycling@co.lawrence.pa.us
www.co.lawrence.pa.us/recycling
724 658-6925



Tri-County CleanWays
Serving Butler, Lawrence,
and Mercer Counties
tccleanways@comcast.net

OUR MISSION

Tri-County CleanWays is a nonprofit organization that works to empower people to eliminate illegal dumping and littering in Butler, Lawrence, and Mercer Counties.

•• The Following Fees Apply ••
(Per item unless noted)
All Prices Subject to Change Without Notice

Electronics: TVs and Monitors..... 55¢ lb.

Electronics: All Others 35¢ lb.
Computer hard drives are destroyed by shredding

Household Hazardous Wastes:

- Chemicals, paint, oil, pesticides, etc..... \$1.50 lb.
- Mercury containing devices..... \$6.50 lb.
- Propane Tanks..... \$16.00 each

Batteries: Alkaline/Rechargeable 50¢ lb.

Batteries: Lead Acid 25¢ lb.

Fluorescent Lights: Compact \$1.00 each

Fluorescent Lights: 4' and less..... \$1.00 each

Fluorescent Lights: 5' and up \$2.00 each

High Intensity Discharge Lights \$2.00 each

Shoes: Wearable Pairs Only no charge

Appliances: Freon-Containing..... \$25.00 each
Refrigerators, Air Conditioners, Dehumidifiers, etc.

Appliances: All Others \$5.00 each
Washers, Hot Water Tanks, Stoves, etc.

Tires: Passenger Vehicle \$3.00 each

Tires: Light Truck..... \$5.00 each

Tires: On Rims \$10.00 each

Tires: Tractor Trailer..... \$10.00 each

Tires: Tractor Trailer On Rims..... \$20.00 each

No Other Types of Tires Can Be Accepted
Limit - 12 Tires Per Person

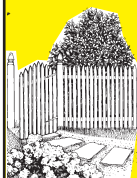
Landscaping

Complete
Landscaping
and Design



Excavating and Ditch Witch

Specializing in
**New Yards and
Yard Repair**



- Low Maintenance Plants
- Retaining Walls
- Driveways
- Patios

Specializing in
**Small & Large Excavation
Small Drainage Problems**

- Footers: Water, Gas, and Sewer
- Demolition
- Driveways



Residential • Commercial • PA033956

Fully Insured • **724 674-8205** • Reasonable Prices

WANTED:
STUD DOG for
Purebred Golden
Retriever
in mid-October;
724 614-3768

LA-Z-BOY 2 Recliner
couch, and 2 matching re-
cliners, exc. cond., navy
blue, moving must sell, \$200
all; 2 Rocker recliners, good
cond. \$150 all; 724 758-7484

JUST JUNK IT!

Removal of all
waste & rubbish, free
estimates, no need
for expensive roll-offs!
724 730-2668

BABY ESSENTIALS
Matching Sets at Sperdute
Fall Harvest, Sept. 28&29,
10am-6pm, Kildoo Rd., New
Castle. Nana's Tuggin' Tags

CHAIN SAW CHAIN
and wood and metal
BAND SAW BLADES
made to size.
Snyder Saw Service
724 758-6782

Weekly Bargain Bulletin
Business office
724 654-5529;
\$200 or less automated
line 724 654-4557

Rentals • Rentals • Rentals •

NEW CASTLE • EHO • HUD

Oak Leaf Gardens

1-2-3 Bedroom Apartments

1139 Pin Oak Dr. • 724 652-6632

Fax: 724 498-0428

www.OakLeafGardenApts.com

Westview Terrace

**2, 3, 4 Bedroom
Townhouses**

910 S. Grant St.
724 510-0190

All: rent and
deposit based
on income, and
must be able to
pass background
check.

Vista South and Sheridan Apartments

Senior/Disabled Living Only

1 bedroom, utilities included

Wait List Open • 724 658-6181



Thomas Byler & Sons Roofing Contractors, LLC

707 Carlton Rd., PA006045
Carlton, PA 16311

Call or Text John 724 699-6858

**3rd Generation Craftsmen
Old World Craftsmanship
New World Innovations**

- New Roofs • Re-Roofs
- Lifetime Shingles and 40 Year Metal

Credit Cards Accepted
Owens Corning Certified Preferred Contractor



Maria B. Mezzanotte, DDS, LLC Paula Joseph Hasson, DMD



- Invisalign Certified
- Accepting New Patients
- Most Insurances Accepted

724 658-5883

3409 Wilmington Rd., New Castle, PA 16105

PUPPIES, BLUE Heel-
er Mountain Feist mix, 3
months old, dewormed,
will make personal dogs,
\$100 each; 238 Buckwalter
Rd., New Wilmington, PA
16142 9-20

Black Angus Cows
bred cows, cow/calf
pairs, 1st calf heifers,
50 calves available;
Taylor Farms
Wampum
412 298-2076

Warehouse For Lease:

13,500 sq. ft.,
724 651-7102

Hoffmeier Self Storage 724 333-6870

Outside Storage Available!

River Rd., Ellwood City
Rte. 65 - Between Ellwood City and New Castle

Rates Starting
at
\$1.00
per
day

2 BEDROOM Apart-
ment, New Castle, 2nd
floor, completely re-
painted, includes stove
and refrigerator, no pets,
\$475 mo. plus utilities
and security; 724 730-
6685 9-20

NEW CASTLE, 3 Bed-
room House, 1st floor
bedroom and bathroom,
pets considered with
additional fee, \$650 + se-
curity, includes sewage;
814 808-5113 texting pre-
ferred 9-20

Recipe Corner

PEARS WITH RASPBERRY SAUCE

6 medium ripe pears
2 Tbsp. honey
2 Tbsp. lemon juice
1/4 C. reduced sugar
raspberry fruit spread
2 Tbsp. vinegar
2 C. fresh or frozen un-
sweetened raspberries

Core and peel pears; set
upright in a 9" square
baking dish. Combine
honey and lemon juice;
pour over pears. Cover
and bake at 350° for
1-1/2 hours or until ten-
der, basting occasionally.
Meanwhile, in a sauce-
pan, combine the fruit
spread and vinegar; stir
in raspberries. Cook
over medium-low heat
until heated through;
spoon over pears. Serve
warm. Yield: 6 servings.

FREE EVALUATION
of your Social Security
Disability Claim.
Call Attorney
Pamela Miller
724 656-1555
No Recovery - No Fee

JPH Remodeling and Repairs

Affordable Pricing,
Quality Work, For all
Your Home Repair
Needs, Interior and
Exterior, Fully
Insured;
904-248-9217
PA114470

3 D's Produce Farm & Greenhouse

**Cantaloupe, Zucchini, Cucumbers,
Eggplant, Sweet Corn, Tomatoes,
Sweet and Hot Peppers,
Canning Peppers Available!**

By Order Only: Zucchini Blossoms

1605 Mohawk School Rd., Edinburg
Mon.-Sat. 10-7, Sun. 10-5 • 724 667-1022



**HONEYCRISP!
HONEYCRISP!
HONEYCRISP!**
Many Other Varieties
Apples, Sweet Corn,
Tomatoes, Donuts,
Cider, Cheese & More!
APPLE CASTLE
277 State Rte. 18,
New Wilmington
724 652-3221
Mon.-Sat. 7:30am-8:00pm

Now Introducing Digital Thermal Imaging

**Goats, Sheep, Rabbits, Guinea Pigs!
Rodents, Dogs, and Cats, oh my!**

- Full Service Hospital: Vaccines,
Surgery, K-Laser, X-Rays, Microchips,
Flea/Tick/Heartworm Preventions



Eastbrook Animal Health Services

AFFORDABLE SPAYING AND NEUTERING

Call today for an appointment
724 714-7925

EXTENDED OFFICE HOURS:
Tuesday & Thursday until 7pm



Looking for a property management
company that understands YOUR needs?



- Struggling to fill vacant properties with qualified tenants?
- Is managing your property consuming too much time and effort?
- Looking for a place to rent?
- Are you looking to invest in quality investment properties?

FOR RENT



(724) 654-2800

RentWithPremier.com

Management • Leasing
Investment • Consulting

Call us today **(724) 654-2800** to see how we can help you!



**CHECK OUT OUR AVAILABLE LISTINGS
ONLINE AT:
WWW.RENTWITHPREMIER.COM**

KHART CRAFTS will be at Spurdute Fall Harvest Weekend, Sept. 28&29, 10am-6pm, Kildoo Rd., New Castle. Don't miss it!

HOYT VULCAN bow, weight 60 - 70 lb., length 29", Spot Hogg sight, drop away rest, stabilizers, quiver, arrows, release \$300; 724 944-2745 ⁹⁻²⁷

CROSSWELL CANVAS: Need a boat cover? Custom tarps for all your canvas needs, 25 years experience; call Jerry 724 475-3779 ¹²⁻²⁷

Rentals • Rentals • Rentals •

NESHANNOCK, 1 Bedroom, 1st Floor Apartment, appliances, washer/dryer hook-ups, off-street parking, pets considered w/additional fee, \$650+ electric and security; 814 808-5113 texting preferred ⁹⁻²⁰

APARTMENT, ONE Bedroom, move in ready, nice quiet neighborhood, New Castle, appliances included, no pets; 724 652-3006 ⁹⁻²⁷

RENT LIBERTY Grange for your next small party, shower, birthday, or other event, holds 80-100, no alcohol, very reasonable; 724 654-0379 Nancy or 724 674-2621 Bonnie ¹⁰⁻²⁵

HALL RENTAL: Ellwood City Free Methodist Church fellowship hall, holds 80-100 people, full kitchen, handicap accessible; Tammy 724 748-5200 or Kyle 724 674-9943 ⁹⁻²⁷

APARTMENTS

New Castle
• Corner Rose Ave. & E. Washington St. 2 Bedroom, 1st Floor, \$470 includes water and sewage.

Ellwood City
• 1-2 Bedroom, \$460 plus electric.
• Efficiency, \$370 plus electric.
724 657-7319

Commercial Space

on Highland Ave., New Castle, ground level, off-street parking, \$300 mo. plus utilities, ideal for office or hair salon/barbershop; 724 730-2015

MAHONINGTOWN: 2 & 3 Bedroom Apartments, appliances, A/C, off-street parking, \$650-\$695 + security and electric; 814 808-5113 texting preferred ⁹⁻²⁰

FULLY FURNISHED Room for rent in Colonial home on 50 acres with 2 lakes in beautiful Wilmington area, \$575/month includes utilities, TV, WiFi cable, refrigerator, laundry, complete use of entire house, no pets; 724 730-6685 ⁹⁻²⁰

FOR

2 and 3 Bedroom Houses

- New Castle
- Union

Immediate Openings
724 658-8256

Member
Western PA
Landlords Assoc.

RENT

Someplace Special Riverside Apartments

- Conveniently Located •
Within walking distance of the stores and restaurants in Downtown New Castle



125 W. North St.,
New Castle
724 658-0520

Senior Citizen Complex

- Main Floor Lounge Area
- Full Security Door System
- Basement Storage Compartments
- Distress Signal For Each Apartment
- Parking
- Full Kitchen
- Elevator Service
- Laundry Facilities
- Recreation Room
- All Utilities
Furnished

Rent A Large Efficiency Apartment
\$353
per month,*
includes utilities

1 Bedroom Apartment
\$443
per month,*
includes utilities

*as available

UNI Home Solutions We Buy Houses

Call Dave "The We Buy Guy"

724 654-5656
webuyhousesnewcastle.com

CLUTTER WEIGH-ING you down and causing stress? I can help you feel lighter and bring you joy! Call Joyous Home Organizing 724 704-0304, www.JoyousHomeOrg.com ⁹⁻²⁷

END OF season sale on cut slabwood, colored mulch, double ground mulch, topsoil, limestone, horse bedding, sawdust, call for prices; 724 866-5547 ¹⁰⁻²⁵

Keystone Construction

Kitchen & Bathroom Remodeling
Roofing, Decks, Siding,
Interior Painting,
Custom Built Mini Barns

Nathan Hostetler
34 Jacobs Rd.,
Carlton, PA 16311
814 720-6115 • PA150086



HIRING • HIRING • HIRING • HIRING

HIRING AMERI-CARE Staffing for New Castle, Mercer, Butler, Slippery Rock, Sharon, New Brighton areas: Personal care workers, CNAs, HHAs, starting \$12+/hour, all shifts available; Call for appt. 724 923-4277. AmeriCareStaffing. ClearCareOnline.com/quick-apply ⁹⁻²⁷

WANTED: PART-time secretary, Lawrence County; Call for appointment; 724 856-8780 ⁹⁻¹³

STATE FARM Insurance Agent, located in New Castle, PA, seeking outgoing career-oriented professionals, with insurance license, to join our team. You will build and develop customer relationships, promote State Farm products Auto, Home, Life and Health; Email resume, include phone number: Madeline.Matta.BU55@StateFarm.com ⁹⁻¹³

WANTED: SOMEONE to split logs for fireplace; 724 656-8182 ^{9/20}

Professional PAINTING

- Interior • Exterior - as can
 - Residential • Commercial
- 25 Years Experience
Free Estimates

Anthony's Painting
724 714-5434 PA#148017



COMMERCIAL Building for Sale, corner Dock and Budd Sts., Sharon, PA, \$49,000; 724 962-3531

2002 MOBILE Home for sale, in park, New Castle area, 3 bedrooms, 2 baths, fair cond., awning, shed, no Artrial of Agreement; 724 654-7852 or 724 674-6731 ⁹⁻⁶

Fireplace Specialist & Masonry Work

Anthony Martone
724 651-7137 PA081050



Seniors Helping Seniors®
THE POWER OF LOVE®

JOIN US AND HELP SOMEONE

while earning money for yourself at the same time.

With **Seniors Helping Seniors** in-home services, you get all the good feeling of **volunteering for pay!**

Our seniors **help other seniors** with in-home services like cooking, light cleaning, housekeeping, driving and companionship.

724-877-3505

www.seniorcareshenangovalley.com

Do you have a passion for seniors and want to make a difference?
Become a CAREGiversm

Home Instead
SENIOR CARE®
to us, it's personal.

By changing the lives of people you work with, you may even change your own.

- Paid Training
- A supportive office staff
- All shifts available: day, evening, overnight
- Sign-on Bonus and Performance Incentives

We Offer!

Apply Now!

HomeInstead.com/580 • 724-535-6101



FACTORY WORKERS Needed: Local company seeks workers with strong work ethic. Must pass physical/drug test. Starting wages \$14/hr. Apply at 1150 N. Cedar St., New Castle, PA 16102 ⁹⁻²⁰

DRIVER WANTED: Someone needed to use my truck & run errands, occasional odd jobs with some lifting, must have valid driver's license, must be dependable; 724 923-1100

ATTENTION SCRAP Car Buyers: I buy used tires on or off rims. Ray's Tires, Ellwood City, PA, 814 860-0194

LAWN CHIEF 545, 15 hp, 43" cut mower \$285; Bolens Eliminator 1402, twin cylinder, 14 hp, 48" cut mower \$175; 724 342-3430

HUGE FROZEN FOOD & GENERAL FOOD AUCTION

Rte. 224, 3 miles east of Poland, Ohio 44436
THURSDAY, September 19 • 6:00pm
Doors Open at 5:00pm • Bring Coolers

Terms: Cash, good check, MasterCard & Visa accepted. 13% buyer's premium with 3% waived for cash or check. One of every item selling absolute.

All American Auctions
By *Mark Miller*
AUCTIONEER
330-507-7600

Mark Miller, Auctioneer OH Lic. # 2005000140
Dennis Hynes, Auctioneer OH Lic. # 57198842109

ESTATE AUCTION

Located: 205 Cecil Avenue, New Castle
PA 16101, off Rte 224 (State St)

Saturday, September 21 • 10:00am
HOUSEHOLD

Dining suite- Drexel ext. table, 6 chairs, server, china cupboard; very nice; wood trim sofa & side chair; rocking chair; oak end stands; large mirror w/Oriental scene; dbl. bed, dresser, chest, vanity, night stands; dbl. bed, chest on chest; maple kitchen table & 5 chairs; knee hole desk & chair; Melody Menges Slovenia accordion, excellent condition; treadle sewing machine; knotty pine wardrobes; 4 dra. File; paper shredder; 50's chrome kitchen table; Hoosier style kitchen cabinet; card table & chairs; 4 section wall bookcase; lamps; Vacuum; linens; stereo; Lenox & other; coll. of cats; knick knacks; commemorative medallions; red crystal tree (beautiful); sun catchers; costume jewelry; set of Shenango dishes; Pyrex bowls; Amana 23 cu. ft. side by side refr/freezer; Amana elec. self-clean oven; microwave; small appliances; pots & pans; seasonal deco.; books; numerous hand tools; organizers; hand corn sheller; lawn & garden tools; alum. Stepladder; table saw; metal water can; wheelbarrow; outdoor furniture; fly rods; fishing tackle; Old Creole; many other items. Clean household you will enjoy. Plan to attend. The net proceeds of auction will go to St. Jude Children's Hospital.

TERMS: CASH or check, all w/ID. No out of state checks. **TERMS:** M/C VISA 3% buyer's premium, discount for Cash or check.

For complete listing & pictures
pattersonauction.com • auctionzip.com #1538
GoToAuction.com #6454



Only a partial listing
For complete listing & pictures
www.pattersonauction.com
www.GoToAuction.com #6454
www.auctionzip.com #1538.

Wayne Patterson, Auctioneer
AU-000700-L • 724 654-7933

Tell 'em you saw it in the Weekly Bargain Bulletin

Pratts Nursery and Gift Shop

*Perennials *Shade Trees
*Ornamental Trees *Topiary Trees
and Shrubs *Flowering Trees and
Shrubs *Fruit Trees and Bushes



2599 Harlansburg Rd., New Castle 724 654-5155
Rte. 108 • 1/4 mi. E. of Law. County Fairgrounds

2003 27' Keystone Springdale travel trailer, exc. condition, sleeps 6 to 8, with bunks, new tires, everything works, \$5,500 obo; 724 730-9686

Experienced Piano Teacher
accepting new students of all ages;
724 544-9536
Wendy Schultz

WANTED STANDING Timber: Landowners - before you sell, please call Yoder Brother Logging for free estimate; 724 301-3167 or 724 253-2030 ⁹⁻²⁰

Having an Auction?

Tell your auctioneer to list it in the
Weekly Bargain Bulletin!
Call 724 654-5529 by 6pm Monday

NEW MERCHANDISE AUCTION

Tuesday, Sept. 17 • 5:30pm
1st and 3rd Tuesday Each Month

Food Available • Info Call 724 847-7890

• Special Auction: Sept. 28 @ 4:00pm •

Located At: 800 Centennial Ave. (Rte. 168)
New Galilee, PA 16141 (Near Fire Dept.)
Auctioneer: Joe Shiraka aka "Cranberry Joe" AU004042

REAL ESTATE AND CONTENTS AUCTION

Saturday, September 21 • 10:00am

630 Winfield Rd., Cabot, PA 16023

1 1/2 Story, 3BR, w/wrap around deck on 18 acres in the woods and inground pool. Gorgeous nature lover's estate. Butler County- Winfield Twp.- Knoch School District. Minutes from Historic Saxonburg. 10 min off rte. 28, 30 minutes from downtown Pittsburgh, and 20 minutes from Cranberry. **MUST SEE!**

GO TO Auctionzip.com #8930 for more details and pictures.



DUKE WHITING
Auctioneer Complete Auction Service
PA AU-003437-L
OH 57-96-7020
305 Easy St., New Wilmington, PA
724 301-0319

WANTED: LAWN and Garden Tractors and Attachments: Cub Cadet, John Deere, plus other brands considered; 724 602-6206 ⁹⁻²⁷

7-1/2' SNOWDOGG MD75 snowplow, always maintained, always stored indoors, must sell, any reasonable offer considered; 724 944-9217 ⁹⁻²⁰

McCONNELL REAL ESTATE AUCTION

I the undersigned will sell at Public Auction. Located at 251 Elmwood St., New Castle PA 16101.

Monday, September 30, 2019 • 6:00pm

2 Story Home & Heated Garage

Lawrence County ~ Union Twp. ~ Union Schools

SHOW DATE: Thurs. Sept. 19, 2019
from 5:00pm-6:00pm

This is a very nice home that is completely re-modeled and updated in Union Twp. The home has 3 bedrooms with closets, 1 1/2 baths and a full, dry basement. The home has a formal entrance with open staircase to second floor and a large, eat in kitchen. There is a nice garage with 220v electric and heat. The home has recently been insulated, the windows are 5 years old, the furnace is 10 years old, and the water was new 1 year ago. The home sits on a large lot with plenty of parking and alley access in Union Twp.

Terms: There will be a 10% or \$2,500.00 buyer's premium whichever is greater added to the final sales price to constitute a contract price. The buyer will be required to put a non-refundable down payment of 10% of the contract price on the day of the auction. This home will sell without reservation to the highest bidder. For more information call Wade at the number below.

Note: This is a very nice home and is NOT in New Castle City limits.

Wade C. Baer, CAI, AMM
Auctioneer/Broker/Realtor
330-424-2705 or Wade@BaerAuctions.com

Virginia McConnell ~ OWNER



BAER AUCTIONEERS
REALTY LLC

Ken Baer: Auctioneer/Broker/Realtor
AU-003018-R

Bill Baer: Auctioneer/Broker/Realtor

Wade Baer: Auctioneer/Broker/Realtor

Mark Harding: Auctioneer

Brad McGovern: Auctioneer/Realtor

www.baerauctions.com
330 227-3236



September 13, 2019

PAINTING and HOME IMPROVEMENTS

All painting, pressure washing, flooring and ceramic, free estimates, fully insured; Call/text 724 494-2204
Miller and Sons
PA029823

INJURED IN an Accident? On the property of another? Dog bite? Car accident? Call Attorney Harry Stump 412 281-5325 or Visit hstumpesq.com ⁹⁻²⁰

KATHY'S APPLIANCES, Good used and re-conditioned refrigerators, stoves, washers, dryers, and more, 90 Day Guarantee; 229 Meadow Mist Rd., Pulaski, PA 16143 ^R

IN SEARCH of project vehicles, paying up to \$2,500 cash, will consider any vehicle that needs work; classic cars also wanted; 724 813-5480 ⁹⁻²⁷

REUNION

WAYNE TWP. Consolidated School Reunion, Sept. 21, 1pm-4pm, light lunch provided, Slippery Rock Presbyterian Church, 258 Slippery Rock Dr., Ellwood City; 724 752-9623 ^{9/20}

PRINCETON SCHOOL Reunion, Sept. 21, 12noon, Hoss's Restaurant, across from the outlet mall, Grove City; for reservations call 724 924-2026 or 724 924-2137 ^{9/13}

SHOOTS

CARL CUSTOZZO Memorial Turkey Shoots: Every Tuesday through Nov. 26, 6:30pm, Turkey, Ham, and Money Shoots, field guns only, bring a friend and have some fun; Ellwood Wampum Rod and Gun Club, Rte. 288, Wampum ¹⁰⁻⁴

TURKEY SHOOT: Every Saturday, 7pm, Sept. 14 to Nov. 16, .680 Chock Limit, Fall Special, 12 meat rounds \$25; Castlewood Rod and Gun, Shaffer Rd., Princeton, 724 924-9010 ⁹⁻¹³

FREE Tire Repair! We will plug your leaking tire for FREE!

Ray's TIRE Shop

Conveniently Located in Ellwood City at
41 Portersville Rd.
814 860-0194

Mon.-Sat. 9am-5pm; Sun. closed

WOW! Used Passenger Tires only \$15.00 each!

We Carry All Major Brands

Like New-Used Tires at Incredibly Low Prices.

Mounting, Balancing, and Tire Disposal available



SHARPENING of chain saws & mower blades, carbide & steel circular saws, router bits & sharper cutters, jointer & planer knives;
Snyder Saw Service
724 758-6782

SOCIAL SECURITY DISABILITY
Has your claim been denied?
Call Attorney
Pamela Miller
724 656-1555
No Recovery - No Fee

K&M PAINTING and Remodeling, Decks, Plumbing, Electric, Dry-wall, Finish and Small Construction, Senior Discounts, Free Estimates, Fully Insured, PA115835; 724 730-7155 ¹⁰⁻²⁵

Youth Group, Sun. 6pm; Wayside Emmanuel, 4437 Mitchell Rd., Nesh. Twp.

1988 HARLEY FLHTC, 103,000, owned 29 years, garage kept, shop maintained, dependable, \$3,500, may trade for Ranger or S-10, low mileage, 6 auto, equal value; 724 475-2201

CLOTH BOOKS by Nana's Tuggin' Tags; Spurdute Fall Harvest, Sept. 28&29, Kildoo Rd., New Castle

Spurdute Farm Market

Open Daily 9am-6pm • 724 667-8866
Just off Rtes. 108 & 551
Mt. Jackson

Home Grown Vegetables!

- We Accept FMNP Checks**
- Sweet Corn
 - Peppers: Bell, Fry, Hot, Cubanelle, Jalapeño
 - Eggplant • Tomatoes • Beans • Pickles
 - Melons (in season) • Broccoli • Cabbage
 - Onions • Zucchini

Zucchini Flowers by Order Only

Fall Harvest Weekend
Sept. 28 & 29 • 10am-6pm

• Yard/Garage Sales •

MULTI-FAMILY Yard Sale: Fri., Sept. 13, 8am-12noon, 284 Leawood Dr., Neshannock Twp.; Decorations, clothes, purses, men's stuff, misc. items

GARAGE SALE: Fri. & Sat., Sept. 13 & 14, 8am-4pm, 1507 Centennial St., Union Twp.; new fishing tackle, lures, bait, buckets, poles & misc.

GARAGE SALE: Fri. & Sat., Sept. 13 & 14, 9am-3pm, 707 Grandview Ave., Union Twp., too much to list

MULTI-FAMILY Garage Sale: Fri. & Sat., Sept. 13 & 14, 9am-5pm, 17 Leslie Dr., Edinburg, go west on 224 to Hill Top Center, turn right, follow signs; household items, tools, toys, some clothes and lots more ⁹⁻¹³

BABY / KIDS Garage Sale: Sept. 13&14, 9am-1pm, 563 Princeton Station Rd., New Castle; rain or shine, items priced to sell, clothing 25¢ a piece, girl Newborn-4T, boy Newborn-12mo., maternity clothing, regular women's clothing med-lg., men's clothing 2XL, and baby gear

GARAGE SALE: Sept. 13&14, 9am-2pm, 1425 Brentwood Ave., Ellwood City; household and Christmas items, cookbooks, small appliances, tools, end/coffee tables, rain or shine ⁹⁻¹³

MULTI-FAMILY Garage Sale: Fri. & Sat., Sept. 13&14, 9am-5pm, 2359 Marr Rd., Pulaski; household, collectibles and much, much more, rain or shine

GARAGE SALE: Sept. 14, 9am-5pm, 16 Overlook Lane, Bessemer; quilts, curtains, rag rugs, primitives, pictures, Vera Bradley purses, too much to mention

MULTI-FAMILY Yard Sale: Sat., Sept. 14, 9am-??, 306 W. Hillcrest Ave., road next to CVS, Neshannock; girl's carseat, base & stroller set, unisex changing table & baby swing, baby girl clothes, brass lamp w/shade, full size velour sheet set, twin black & white comforter, burgundy & cream floral wall hanging, Christmas wreaths, football arcade game, young men's Pac-Sun t-shirts, women's & young women's clothes

MULTI-FAMILY Garage Sale: Sat., Sept. 14, 8am-5pm, 1024 Rose Ave., New Castle; portable dishwasher, microwave stand, Halloween stuff & just about anything you can imagine

GARAGE SALE: Sat., Sept. 14, 9am-??, 1553 Mohawk School Rd., Edinburg, PA, 1/2 mile off Rte. 224; Lots of different stuff

GARAGE SALE: Sat., Sept. 14, 9am-2pm, 2 Worthington Ave., New Castle; baby & toddler clothes, toys, furniture, old tools & misc.

GARAGE/MOVING Sale: Sat., Sept. 14, 9am-??, 9 Manor Ave., Neshannock; radial arm saw, shaper, various garage tools, household items, furniture & lots more

MULTI-FAMILY Sale: Sat., Sept. 14, 8am-12noon, 118 E. Edgewood Ave., New Castle; books, fossils, postcards, collectables, household, antiques, lots of surprises, don't miss it!

MULTI-FAMILY Sale: Sat. & Sun., Sept. 14 & 15, 8am-??, 201 Coffee Run Rd., Pulaski, PA 16143

HONEYCRISP! HONEYCRISP! HONEYCRISP!

Many Other Varieties Apples, Sweet Corn, Tomatoes, Donuts, Cider, Cheese & More!
APPLE CASTLE
277 State Rte. 18, New Wilmington
724 652-3221
Mon.-Sat. 7:30am-8:00pm

Mrs. Clean's Cleaning will clean your home/condo like it's my own! Experienced, Dependable, Honest; 724 761-0135

WANTED: OLD Books, paying cash; call or text Tom 724 301-8470 ⁹⁻¹³

OVER 3000 used tires available. If I don't have your tire, no one does. Passenger tires starting at \$15.00. Call Ray's Tire 814 860-0194, 41 Portersville Rd., Ellwood City, PA. Mounting, balancing and disposal available, Mon.-Sat. 9-5

Brushhogging
Large or Small Fields;
724 674-0237

For All Your Glass Needs

CITY GLASS Co. Inc.

1064 Beckford St., New Castle • 724 654-7241
cityglasscoinc.com • 800 478-8188

• Commercial Storefronts • Shower Doors •
• Residential Glazing • Mirrors •

WINDSHIELD GLASS

With this ad you can save
\$50 OFF
your insurance deductible or
\$10 OFF
non-insurance deductible
Some restrictions may apply

1983 INTERNATIONAL Flatbed Dump, 30,000 GVW, DT 466 5 speed, fair cond., farm stickered, \$2,995 obo; 724 730-6685 ⁹⁻²⁰

LANDSCAPING AND Tree Service by C. Petronelis Landscaping, free estimates, always reasonable, PA111947; 724 944-3915

FREE TIRE Repair! We will plug your leaky tire for free! Ray's Tire, 41 Portersville Rd., Ellwood City, 814 860-0194

FULL SERVICE Collision Center

G.O. CRIVELLI AUTOMOTIVE

Certified I-CAR Gold Class

Aluminum Repair Center

*Servicing All Major Insurance Companies.
We Can Assist You with Any Insurance Claim!*



FREE LOANER CAR
With Any Collision Repair, when available

"No Wait, Jose!" Mexican Buffet

Now Available **ALL DAY**
at Our Union Location

Lunch Buffet **\$7.95** 11am-3pm

Expanded **\$10.95** After 3pm
Dinner Buffet

El-Canelo

2506 Ellwood Rd., Shenango Township 724 656-5141
2421 Wilmington Rd., Neshannock Twp., 724 657-2901
2201 West State St., Union Township 724 657-2004

Start The
Day Off
With The
NEW \$5.00
Desayuno
Meals

Our
Union Location
is Open
For Breakfast
7am-10am



All Day Breakfast and Lunch
Try Our **NEW MAC ATTACK Burger**,
Fried Bologna Sandwich,
and Fisherman's Platter



3208 Wilmington Rd.
New Castle
Open
Tues.-Sat. 7-7;
Sun. 8-5

724 856-3181 • Catering Available

Banquet Meeting Room Available

Adjustable height tub
safety rail, weight capac-
ity 300 lb., never opened
\$20; 4" raised toilet seat,
new \$20; 724 758-1451

Baby items: Pack 'n Play,
very good cond., clean
\$25; bouncer \$15; walker
\$15; V-Tech Einstein toy
set, \$10 all; 724 944-1232

**Open Until
8pm**

Friday and Saturday

Looking
For A Nice
Place To Eat?

**Neshannock Creek Inn
RESTAURANT**

804 Main Street • Across from the boxcars in Volant, PA
724 533-2233 • Mon.-Thur. 11am-5pm, Fri.-Sat. 11am-8pm, Sun. 12-5pm

Laszlo Plumbing and Heating

Propane Refills Available

YORK
It's time to get comfortable.
Installation & Service

Call Today!
724 758-5610
168 Portersville Rd.
Ellport, PA
Free Estimates



Old Hickory SHEDS

• all sizes • rent to own
or purchase

Also Available:
Metal Carports & Garages

422 Landscape Supply, LLC

3298 US Rte. 422, New Castle, across from old
Kalajainen Boat Sales • **724 924-2400**
Mon.-Fri. 8am-5pm, Sat. 8am-4pm

REDUCED \$5,000, now
only \$34,900! And Free
Lot Rent for 2 Months!
New 2018 Commodore 3
bedroom, 2 bath, manu-
factured home, includes
kitchen appliances and
central air, immediate
possession, set up in
Harbor Terrace Mobile
Home Park, low pay-
ments, easy financing
available; 724 658-1000
or 724 658-6160 9-20

Fun With Words: If you're trying to fail
and succeed, what did you just do?

Rudy Spielvogel
Mobile DJ Service
Experienced / Dependable

- Wedding Receptions
 - Anniversaries
 - Christmas Parties
- 724 971-4706**



Now Here's A Tip
by JoAnn Derson

• If you have stainless
steel appliances, you
might want to try a
simple furniture polish
to get those surfaces
shiny and smudge free.
You can use most any
commercial spray-on
polish, applied with a
clean, lint-free rag.
© King Features

J. Brandt Tree Service, LLC
WE SPECIALIZE IN
Tree Removal & Trimming

PA127530

We Also Do:
Shrubs • Bushes • Storm Cleanup
Have Chipper • Fully Insured

Call anytime for **Free Estimates**
Ask about our **Senior Citizen Discount**
724 651-3255 or 724 971-6218



Once fired range brass:
2,000 cases 223 \$60, 2,000
cases 9mm \$30, 2,200 cas-
es 40 cal. S&W \$44, 200
cases 44 mag \$30; Sneaky
Pete type holster, 5"x7",
like new \$25; 724 336-0009

TURKEY RUN LANDSCAPING

- Chipper Service
- Stone Work
- Lawn Care
- Mulching
- Firewood:
Delivery or Pick Up



• Tractor Service / Brushhogging
Quality Service, Guaranteed!
Experienced • Fully Insured • PA116962
724 730-3977

email: turkeyrunlandscaping@gmail.com

Regular Lawn Maintenance

**It's Time for Brown's Annual
PIE BAKING CONTEST**

McConnell's Mill Heritage Festival
Saturday, September 28

In the upper parking lot at McConnell's Mill.

First Prize: \$100
Second Prize: \$50
Third Prize: \$25

Call us at Brown's for the
contest rules, 724 368-3227.
Good Luck!



Ellwood - Portersville Rd., Portersville, PA
Sun.-Thurs. 7am-8pm, Fri.-Sat. 7am-9pm • Facebook

Mathews Feather Max 40" desk w/2-shelf top
bow, drop away sight, \$50; 2 soft side saddles,
quiver, arrows, release \$30 ea.; 2 bridles, \$15 ea.;
\$175; 724 758-2119 724 510-6712

**Handmade
1/2 lb Burger
Combo...\$7.99**
with fries and fountain drink

**SPICY
CHICKEN
Sandwich**
with fries...\$5.99

BILL'S SANDWICH SHOP

UNION-1824 W. State St., New Castle **724 654-1921**

HOT SANDWICHES • GIANT SUBS

ARK	MOOS	SLAY
POI	OBOE	COVE
PINT	SIZE	AGOG
GUT	EREL	LONG
CASTLE	SAP	
LII	YAM	RELAY
ORZO	TAJ	DIVE
DYERS	YAP	FEW
APE	WAGERS	
DACTYLS	WAS	
UGLI	DOWNSIZE	
OREO	ERIE	ZED
SAWN	REND	ENS

Used Appliances

CLEARANCE
Ranges - Working
Stove Top Only
\$80

Washers
starting at **\$185**

Dryers
starting at **\$175**

Refrigerators
starting at **\$175**



JOE'S of L.A.

127 E. Long Ave., New Castle
(In the Marlin Building) **724 658-8256**
Mon.-Fri. 9:30-6:30, Sat. 9:30-5

**ROOF
Tune-Up! \$199**

- Seal as many as 3 Leaks
- Replace Missing Shingles (26)
- Seal Chimney Flashing
- Seal Sanitation Pipe
- Clean All Gutters

**\$100 Off Whole House
Gutter Replacement**



724 301-5002

Registered • Bonded • Insured
OzingaRoofSystems.com
PA113376

LOS AMIGOS

FAMILY RESTAURANT

Authentic Mexican Food

\$5 Fajita Nacho every Monday
\$1 Tacos every Tuesday

Randy Velez



Fri., Sept. 20,
5:30-8:30PM
Fri., Oct. 18

2017 W. State St., New Castle • 724 856-3495
Mon.-Thurs. 11-10, Fri., Sat. 11-10:30, Sun. 11-9

\$6 OFF

a purchase of
\$35 or more
with this coupon.
Expires 9/30/19
Cannot be combined with
other discount or offer



\$3 OFF

a purchase of
\$15 or more
with this coupon.
Expires 9/30/19
Cannot be combined with
other discount or offer



Airless Spray Painting and Pressure Washing Equipment Sales and Service

We serve contractors,
and do-it-yourself homeowners.

RENTALS \$49.95 per day

JAMISON'S AIRLESS PAINT SYSTEMS
Jim and Kathy Jamison
125 Grandview Rd., Ellwood City • 724 758-6036

Strange But True

by Samantha Weaver

• Would you rather give up TV or your phone? In a Pew Research poll conducted last year in the United States, only 31 percent of those surveyed said it would be "very hard" to give up TV, while 52 percent said the same thing about their cellphone.

• The small Central American country of Costa Rica has more species of mammals and birds than are found in all of the contiguous United States and Canada combined.

© King Features

Weekly Sudoku

by Linda Thistle

		8	6					5
6	2				9		3	
5				1		6		
4					2			7
	1		8	7		5		
		7		3			8	
	3			9		7		
		9			5	8	2	
2			1					3

Place a number in the empty boxes in such a way that each row across, each column down and each small 9-box square contains all of the numbers from one to nine. ©King Features.

Fluke Pro 3000 analog tone & probe kit, new in box \$50; 200 amp main breaker panel, Pushmatic breakers, full of breakers \$60; brass curio cabinet, 6'h, 30"w \$50; 724 730-3402

Banks' Tree Services, LLC

• Tree & Shrub:

Trimming, Removal, Replanting

- Stump Grinding
- Firewood & Delivery
- Landscaping & More



724 312-5492
24 Hr. Emergency Service
Free Estimates • Fully Insured

PA145526

The Garage Door Experts



Residential
Commercial

Service
Repairs

PA002540

724 658-7316 724 342-3667

Antique dresser, painted mauve color, Shabby Chic \$100; 724 944-7300

2 pool filters, new in box, Unicell P9499R, Hayward EX1250, pd. \$78 ea., sell both for \$50; GPS system \$15; twin bedding set \$10; over-the-door towel rack \$5; kitty Litter Genie \$10; bread box \$15; booster seat \$5; 724 336-3320

Lady's s-10 Nike tennis shoes, \$10 obo; 724 761-6097

New and Used TIRES

- General Maintenance
- Repairs
- Alignments
- PA State Inspection

844 E. Wash. St., New Castle, PA • 724 923-9477 • Owner: Carl Hairhoger



Gaming monitor, 5 milisecond reponse time, UHD, 24" 1080P LED, \$120 or best offer; 724 652-7243

Wanted: trampoline side wall safety netting, unused or discarded, even if in need of repair; 724 624-4273

MITCHELTREE BROS.

LOGGING & LUMBER, INC.

Turman Premium HARDWOOD PELLETS

Call for Pricing • Delivery Available

Buyers of Standing Timber, Timber Land, Saw Logs, and Hardwood Lumber

724 598-7885



sears AUTO CENTER

2500 W. State St., New Castle **724 657-2550 or 724 202-9168**

FREE BRAKE EVALUATION

\$60 Instant Savings
on 4 wheel brake service

\$30 Instant Savings
on 2 wheel brake service

*Through October 5, 2019
See Sears Auto Center for details

Buy More, Save More
on Automotive Services

Save \$10 When you buy 1
Save \$30 When you buy 2
Save \$60 When you buy 3
Save \$80 When you buy 4

Select any of the following:
A/C Recharge • Transmission Fluid Exchange
Four Wheel Alignment • Differential Fluid Exchange
Engine Clean Flush System • Brake Fluid Exchange
Diagnostic System Check • Coolant Fluid Exchange
Power Steering Fluid Exchange • See Sears for details

DieHard • Michelin
BF Goodrich • Uniroyal

Savings On Tires

\$50 Instant Savings
On 4 Tires With Installation

\$25 Instant Savings
On 2 Tires With Installation

*Through October 5, 2019
See Sears Auto Center for Details



PA STATE INSPECTION

Do you have Pain? Inflammation? Sleeplessness? Anxiety? Psoriasis? Nausea?

CBD Questions?

**Professional Medical Advice
at the Medicine Shoppe Neshannock**

We're focused on bringing
our customers the purest
CBD Industrial Hemp Oil

**Available for
Pets Too!**



Good Health

The Medicine Shoppe®
PHARMACY

New Castle
1707 Wilmington Rd.
Mon.-Fri. 9-5:30, Sat. 9-2
www.medicineshoppe.com
724 652-3366

**- WANTED -
TRAINS:** all scales,
Lionel, MTH,
Standard Gauge,
HO, American Flyer.
**Also Buying
COLLECTIONS.**
Will beat
anybody's price;
724 667-1342

Kenmore portable dish-
washer w/wood counter-
top, very good cond. \$100;
fiberglass transport cage
for large dog \$40; 724 752-
8455

Four 7' antique pleated
pillows \$200; 724 946-3559

Washer & dryer, good
cond., \$100 both; frost-
free upright freezer w/
light \$75; 724 752-1610

2-drawer steel filing cabi-
net, black, 29"x15"x22",
neat, cheap storage \$20;
330 536-8517

Wanted: any unwanted
chickens or ducks; any
unwanted snow fence;
724 654-1436

Stock piano sheet music
and music books \$20; rid-
ing spring jump horse, ad-
justable \$25; 724 658-5475

**Shop My Collection at the
Sperdute's Fall Festival**
Sat. & Sun., Sept. 28 & 29 • 10am-6pm
206 Kildoo Rd., New Castle, PA 16102
facebook.com/JamiesReadingRoom

Shop online:
n5068.myubam.com



USBORNE
BOOKS & MORE
Independent Consultant

Jamie Plyler • plyler.jamie@gmail.com

Tree Service Fagan Services LLC

Trimming • Removal
Stump Grinding
Free Estimates
24 hr. Emergency Services



724 971-2198

We are fully insured
legally registered
contractors.
PA050411

faganservicesllc.jerry@yahoo.com



Gas furnace w/blower,
good working cond. \$125;
ventless gas heater, cost
new \$200, asking \$90; 724
977-4760

Pacer thermo plastic cen-
trifugal pump, w/Briggs
& Stratton Series 525
3.5hp engine, \$150, call
for details; 724 535-7337

Burgundy color transport
wheelchair, folds to go in
trunk or back seat, good
cond. \$35; 724 654-2781

Lawn mower, 20" cut,
Briggs & Stratton en-
gine \$50; lawn tractor tire
chains, 20x8.00 \$20; 724
667-8065

Maytag Plus refrig. w/
ice maker \$100; GE elect.
stove, self-cleaning oven
\$75; Maytag washer \$75;
Whirlpool dryer \$75; 724
651-2302

ALLEGHENY CONCRETE, LLC

Residential - and - Commercial

- Concrete Flatwork
- Retaining Walls
- Foundations
- Stamped Concrete
- Radiant Heated Flooring and Driveways
- Building Site Prep Work
- Driveways
- Basement Waterproofing
- Brick / Block / Stone Work

Sandy Lake, PA • **724 813-1798**

www.AlleghenyConcrete.com

facebook @AlleghenyConcretelc • PA141265

**Specializing
in All Types
of Masonry**

Free
Estimates

Insured

Satisfaction
Guaranteed!

LIMESTONE & TOPSOIL

Wholesale • Retail • Delivery Available

• Base & Top Limestone

EXCAVATING

• Fully Insured • Free Estimates

Beyond Corp., LLC PA086830

No job too small • **724 730-2296**

7 pcs. 3/4"x3" 8' long
wood, cherry finish, 14
pcs. assorted molding, 8'
long, same finish \$50; in-
sulated drapes, 75"w, 81'l
\$15; 724 372-3921

Hunters Special: Wool-
rich orange camo coat &
pants, s-XL \$20; Cabela's
Deluxe backpack \$10; all
almost new; 724 654-0607

WeatherTech® • Floor Liners
• No Drill Mud Flaps

From: **HENLEY'S**
TRUCK ACCESSORY STORE
est. 1968



**Truck
Caps
& Lids**

- Bed Liners
- Bed Mats
- Bed Rugs

6 miles West of New Castle on Harbor-Edinburg Rd.
(between Rtes. 422 & 224) **724 652-1763**
or 1-800-433-5969 • www.HenleysTruck.com

B&W Hitches • Toolboxes • Ladder Racks

Kenmore gas range,
black & white, self-clean-
ing \$200; 724 654-3180

Retired Teacher PAINTS

- Interior
- 30+ Years Exp.
neat, reasonable,
dependable;

724 667-8048
Frank PA087536

**DO YOU WANT TO QUIT
DRINKING?
WE CAN HELP.**

For meeting information or
to talk to someone call/text

ALCOHOLICS ANONYMOUS
724 923-0236

Salt spreader, fair cond.,
needs some work \$25;
1980 Peugeot 10 sp. bike
\$30; white resin table, 5
chairs \$25; 724 944-9217

Brand new transport
chair \$90; roller walker,
extra wide, 500 lb. capac-
ity, great cond. \$100; 724
359-7505

cambio Construction & Concrete

Additions ~ Decks ~ Garages
Stamping ~ Driveways ~ Patios ~ Sidewalks ~ Footers ~ Pools
All types of roofing

Free Estimates

Tom Cambio
724-614-4259

PA029723

Fully Insured

Tyre Patterson
724-971-1500

Large white bird cage
w/access., 17-1/2" deep,
30"w, 36"h \$35; small cor-
ner cat stand w/perch,
beige \$20; large unframed
mirror, 23-1/2"x58" \$125;
724 685-9845

Queen size wooden head-
board & frame \$125; 25th
Anniversary Cabbage
Patch Kid in box \$30;
One Touch Verio Meter,
new in box, \$10 obo; 724
510-8682

ROOFING

Replacement Windows
Siding

Soffit & Fascia
Room Additions
Garages • Decks
Kitchens & Baths
Replacement Doors

L & D Construction
Locke Home Improvement **724 652-0531**



5 kittens: 1 gray, 3 striped,
1 black, born July 2, \$10
ea. re-homing fee; 724
372-5717

L.L.Bean down-filled
72" sleeping bag \$50;
Havahart Easy Set live
animal trap, used once
\$35; 724 946-2860 leave
message

SQUARE BALES 1ST & 2ND CUT HAY

Taylor Farms
Wampum, PA
412 298-0276

10 YARD DUMPSTER

\$190 per week
same day delivery
724 971-9968

Bring Us Your Pickup Load \$50

Free: 1 cord firewood, cut to 18"l, not split, mostly pine; 724 654-6556

Wanted: used push mower w/side discharge, must run; 724 535-7211

Free: kittens, 9 wks. old, gray & white, black, tiger stripe, male & female, short hair; 724 758-2256

- Concrete sidewalks and patios
- Restoration: concrete, masonry, chimney
- Mulching • Stone • Retaining walls
- Hedge trimming and removal
- Tree trimming and removal

Yohman Landscaping and Concrete, LLC

724 730-9007 • PA#148727

1 full, 1 queen bed, no mattresses or box springs, \$100 ea.; 630 220-9155

2nd row seats for 2000 Honda Odyssey, gray, nice cond., \$150 or best offer; 724 308-7236

2 clear plastic 3-gal. drink dispensers, used once, \$15 ea.; 724 699-2579

Outdoor Opportunities

By COL (Ret.) Grey D. Berrier II

Consider an Urban Adventure:

Try Biking Pittsburgh's Three Rivers Heritage Trail



Do you remember the scene from Jim Carrey's movie, "How the Grinch Stole Christmas", where referring to the Who's down in Whoville he exclaims "hate, hate, hate ... hate, hate, hate ... double hate ... loathe entirely!" I don't know what it says about my personality, but there is something that I "loathe entirely" and that's fighting rush hour traffic and sitting still in gridlock. When I first returned to full-time employment in the PA Army National Guard in Dec. 1989, I was initially assigned to Hunt Armory between Shadyside and East Liberty on Pittsburgh's East Side. I quickly learned my way around the city and soon developed my philosophy for driving around Pittsburgh that prevails to this day. I find you can get anywhere in Pittsburgh with very little traffic, if you arrive at your destination before 7 AM. This often means getting out of bed at 4:30 AM and leaving the house before 5:30 AM, but I'd rather do that and arrive early at my destination, rather than deal with "beep-and-creep" on Pittsburgh's roads between 7 and 9 AM.

Numerous times over the years, I've been forced to make my way through Pittsburgh rush hour traffic when I've just had to deal with the mayhem. On some occasions, it's taken over 20-minutes to travel one mile from I-279 up on the North Shore by PNC Park out to the Parkway West as the slow crawl initially requires you to merge onto the Fort Duquesne Bridge, then squeeze onto the Fort Pitt Bridge, and finally work your way through the Fort Pitt Tunnel. It was during one of those moments, just sitting there in stationary traffic on the Fort Duquesne Bridge, that I watched numerous individuals freely pass by on their bicycles on the adjacent biking/walking lane from the North Shore to Point State Park. I soon realized you can probably get around downtown Pittsburgh quicker by bicycle during rush hour than you can by motor vehicle.

Back on Saturday, August 31, 2019, I loaded my road bike into the truck and drove down to the same parking area under the I-579/Veterans Bridge, where we parked to go kayaking. There, I started my exploration of Pitts-

Mangina Construction

- Garages
 - Block Work
 - Vinyl Siding
 - Concrete Work
 - Carpentry and Additions
 - Basements & Foundations
- Senior Discount - Free Estimates - Fully Insured



724 336-4472 724 652-3051

burgh's Three Rivers Heritage Trail, a series of 20+ miles of paved walking/biking trails that parallel the Allegheny, Monongahela, and Ohio Rivers. I initially pedaled up along the Allegheny River on the paved trail towards Sharpsburg. Shortly after the 40th Street Bridge by Millvale, the trail was completely blocked by a fallen tree and I was forced to turn around. Heading back downriver, I passed hundreds of other walkers, runners, and bicyclists as I made my way past PNC Park, Heinz Field, the Carnegie Science Center, and the Rivers Casino, before turning around by the old Western Penitentiary. Pedalling back up along the Ohio River, I stopped by Heinz Field to take some photos and text my youngest daughter. Pitt fans were tailgating before their football game with Virginia and that included more than two-dozen boats tied off along the North Shore. My daughter agreed to meet me at the Pretzel Shop along East Carson Street by the Birmingham Bridge. The bike ride across the Fort Duquesne Bridge, around the Point, under the Fort Pitt Bridge, past the Mon Wharf, out the Eliza Furnace Trail past the Allegheny County Jail, and over the Hot Metal Bridge to the South Side took me less than 25-minutes before I was able to meet up with Faith for a well-deserved pretzel.

Afterwards, I stayed off Carson Street, following the bike trail along the Monongahela River, before crossing over the Smithfield Street Bridge by Station Square. I paused back by the fountain at the Point for some photos, before pedaling back to my starting point under the I-579/ Veterans Bridge. It was a great way on an absolutely beautiful day to end the month of August with a 24-mile bike ride around Pittsburgh in a little over 2-hours. If you'd like to experience Pittsburgh for yourself in a manner other than sitting still in heavy traffic, why not take a pleasant bike ride on the Three Rivers Heritage Trail sometime and you'll soon realize Pittsburgh has a lot to offer from the seat on your bicycle!

God Bless, Be Safe, and Great Outdoors! ©WBB 2019

Figurelli Lawn Care, LLC

Residential & Commercial

- **LEAF REMOVAL**
- Lawn Service • Landscaping
- Retaining Walls
- Minor Excavating
- Snowplowing/De-icing

Fully Insured • PA114956

Call for an Estimate Today!



724 714-4436

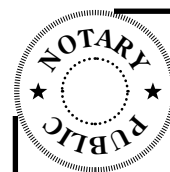
Loggy Bayou climbing tree stand \$30; 4' shop light \$10; 724 654-1406

Boy's winter clothes, 40 pcs., size 12-18 \$25; 724 312-3116

Bronze hanging kitchen light, 21"h, 24" across, has 3 9" globe shades, like new \$30; 724 674-5828

Ping i15 irons, 4-PW, steel shafts, regular flex, nice cond. \$125; 724 652-9828

Free for hauling: pine wood, cut in 3' pieces; 724 652-9175



Jodi's Notary

Over 20 Years Experience

- T-Plates
- ATV, Snowmobile, Boat Registrations

Open Daily 10am-4pm, Sat. 9am-1pm, eves by appt.

146 Franklin Rd., Mercer • 724 699-3093
Located 1/2 mile on Rte. 62 N. in Mercer

Hornady loading block \$5; Daisy Buck BB gun, 9,000 BBs \$25; 2 spring loaded Airsoft pistols, 7,000 pellets \$20; dictionary \$5; 724 652-8163

Lg. metal office desk \$20; hutch & chair \$80; computer desk \$22; 3 component stereo \$125; 724 758-6074

BANKRUPTCY

Need a Fresh Start???

Know Your Options...

For a **FREE CONSULTATION**,

Call or Visit

THE LAW OFFICE OF

MEDURE BONNER BELLISSIMO

www.medurebonnerlaw.com

713 Wilmington Ave., New Castle, PA 16101

724 653-7855

We are a debt relief agency.

We help people file for bankruptcy relief under the U.S. Bankruptcy Code.

Craftsman lawn tractor, 18hp, 24" cut, runs and cuts good \$200; 724 822-1937

China cupboard, good cond. \$75; adjustable metal bed frame \$25; fire pit \$75; 724 761-4717

WeatherTech floor liners for 2017 Chrysler 300 \$90; 724 308-7039

C. Drake & Co. Established 1988

Residential and Commercial



- **MOWING:** Weekly / Bi-Weekly
- Accepting New Customers
- Edging and Mulching

Call Tim "Tubby" Drake
724 656-1479 or 724 730-3325
c.drakeandco@comcast.net • PA085677



OPEN HOUSES

Who says 3 of a kind can't beat a full house?

Come see all of
Keller Williams
Open Houses on
Saturday, Sept. 14
from 10am-12pm.

Turn these into a full house with a new family!



248 N. Market St., New Wilmington, PA 16142

JR Hardester 724 651-2158 • Mark Walzer 724-730-8813
Karen Coulter - 724-674-6211

135 Classic Lane, New Castle, PA 16105



110 Windemere Dr., New Castle, PA 16105



kw
KELLER WILLIAMS.

Aiken Refuse 724 758-9400



Roll-Off Services:

10 Yard, 12 Yard, 15 Yard,
17 Yard, 20 Yard,
30 Yard, 40 Yard
*Rental Times Adjusted
to Meet Your Needs*
www.aikenrefuse.com

Commercial Dumpster Service:

2 Yard to 8 Yard
Weekly or
Bi-Weekly Service
www.aikenrefuse.com



• Your Local Hauler •
FOR OVER 35 YEARS



Oak round pedestal table w/leaf, 6 chairs \$150; oak coffee table \$20; dk. wood twin headboard \$10; all good cond., you pick up; 724 674-7246

Brand new Kohler Deerfield 33"x22" almond double basin drop-in residential 4-hole kitchen sink, in orig. box, retails \$345, sell only \$200; 724 667-9483

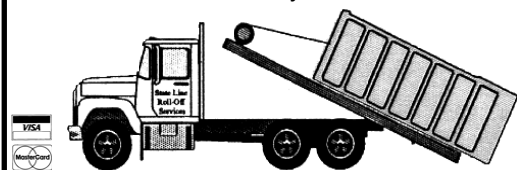
**If It's SERVICE You Want,
CALL US!**

State Line Roll-Off

10 Yards
14 Yards
20 Yards
30 Yards
40 Yards

Call Today for Pricing
724 654-4408

Ask for Bryan
website:
www.statelinerolloff.com
email: statelinerolloff@yahoo.com



**BURNING
BARRELS**
Deliver
New,
Remove Old;
724 846-6665
Call 9am-7pm

Scotts 38" wide tow behind spreader \$65; pr. wheel weights for Cub Cadet \$50; alum. canner w/ jar lifter \$10; 724 714-4161

Roofing

Get a Better Price!
We do all kinds, 30 years experience;
724 658-6112 Lou
PA034825

SHAFFER TREE SERVICE

• Land Clearing • Bucket Truck Service
• Tree Trimming • Chipper Service
• Storm Damage • Snow Plowing
Over 50 Years Experience • PA085463
Free Estimates • Fully Insured
"No Tree Too Large - No Job Too Small"

724 658-1060

Owned & Operated by Larry E. Shaffer
515 Knox Ave., New Castle, PA 16101
www.shaffertreeservice.com

**We Specialize In
Tree and Stump Removal**

6 Christmas wreaths, burgundy bows, white lights \$20; 12 pc. setting Christmas dishes: plates, salads, soup bowls, platters, lg. bowl, glasses to match \$30; 724 699-5737

• **STRAW** •
Square Bales
\$5.00 each
Boak Farm
724 924-2396

The Leader in Truck Caps & Accessories
TOPCAP
TRUCK Accessories



738 Colt Road, Transfer Pa. 16154
www.topcap.us | info@topcap.us
Store Hours: Monday - Friday 9-5 Saturday 9-1



724.646.0210

BUMPER TO BUMPER ACCESSORIES!!!
RUNNING BOARDS • HITCHES • LINERS • TONNEAUS
BUG GUARDS • CHROME TRIM AND MUCH MORE!

J.E.L. Excavating

Sewer Tie Ins, Water Tie Ins, Septic Systems, Storm Drains, Basements, Footers, Driveways, Sidewalks, Lot Clearing, Ponds, Brush Hogging, Retaining Walls, Yard Installs, Swimming Pools and Most Other Excavating Needs.

**Experienced • Insured
Free Estimates
724 730-0980**

362 Enon Rd., Enon Valley, PA 16120



B&B Diving Specialties

The Toy Store for Skin and Scuba Divers
Ideal for Cruises: Mask, Fins & Snorkel Sets \$99.99

• Full Line Scuba & Skin Diving Equipment • Gift Certificates
• Registration for Snorkel and Scuba Classes -
Scuba Schools International and NAUI Dive Training Facility

1815 Churchill Rd., Hillsville, PA 16132
724 667-9448 • PO Box 277

Open Mon. & Fri. 10am-5pm, Sat. 10am-2pm
Other hours by appointment • 724 309-5595 cell

**SCUBAPRO
Atomic**



Serving Lawrence
and surrounding
counties for
20 years

724 730-5644
PA065575

• Residential and Commercial Roofs
• Rubber Roof Specialist
• Soffit, Fascia and Gutters
• Siding, Windows and Additions
• All Work Guaranteed
• Emergency Leak Repairs
• No job too small • Insured



Back-to-Back!

NOW HIRING!

Ridgid combo pack, 2 batteries, battery pack, screw gun, sawzall, circular saw, \$50 firm; 724 674-2198

King Crossword

ACROSS

1 Old love boat
4 Cattle comments
8 Dispatch
12 Luau side dish
13 Reed instrument
14 Inlet
15 Small
17 Enthusiastic
18 Eviscerate
19 Soon
21 Rook
24 Potential syrup
25 Roman 52
26 Thanksgiving veggie
28 Pass along
32 Ricelike pasta
34 — Mahal

36 Cannonball, maybe
37 Color workers
39 High-pitched bark
41 A mere handful
42 Mimic
44 Bets
46 Poetic feet
50 Existed
51 Tangelo trademark
52 Do some firing
56 Sandwich cookie

DOWN

1 Smartphone download
2 Marseilles monarch
3 Huge
4 Pretty much
5 Japanese sash
6 Leak slowly

1	2	3	4	5	6	7	8	9	10	11
12			13				14			
15			16				17			
		18			19		20			
21	22			23		24				
25			26		27		28		29	30
32			33		34		35		36	
37				38		39		40		41
			42		43		44		45	
46	47	48			49		50			
51				52		53			54	55
56				57				58		
59				60				61		

57 Great Lake
58 Londoner's letter
59 Cut, as logs
60 Tear to bits
61 Type measures
7 Prophets
8 Resold for big profits
9 Corporate symbol
10 Shakespeare's river
11 Safecracker king
16 Historic boy
20 Listener
21 LummoX
22 Ethereal
23 Dine on
27 Has permission
29 Of natural dimensions
30 State with certainty
31 Some evergreens
33 Speech
35 Mandible
38 Agent
40 Hocked
43 Church leader
45 Petrol
46 Twosomes
47 City in India
48 Ball of yarn
49 Angry
53 Triumph
54 Buddhist sect
55 Wood and Wynn

Classified Service Directory

Service and Professional • Merchants and Businesses

BOOKS

USBORNE Books & More... Open a World of Possibilities! Fund-raisers, Booths, Book Fairs, Matching Grants, and Reading Incentive Programs for Schools. Facebook Parties, too! Visit: Facebook.com/JamiesReadingRoom Email: plyler.jamie@gmail.com Shop: www.N5068.myubam.com Jamie Plyler, Educational Services Representative

CHILDREN'S GIFTS

Nana's Tuggin' Tags, Fleece or flannel mini blankets. Children's Cloth Books. Matching Baby Essentials sets: blanket, changing pad, burp cloth. facebook.com/aTouchofJoy .TugginTags

CASH PAYOUT? 70 years old and kids are grown? Do you need that life insurance or is a big life settlement cash payout smarter? Call Benefit Advance. 1-877-332-9643

CHURCHES

FIRST ALLIANCE
111 Mission Meade Dr.,
Rte. 18 N., Nesh. Twp.
Sun.: 9:30am Sunday
School, 10:45am and
6:00pm Worship;
Wed.: 11:00am Midweek
Prayer/Bible Study;
724 654-4512

**WAYSIDE
EMMANUEL Church**
Sunday: The Way Cafe
8:45-9:50am, Worship
10am, Thurs. Online
Bible Study - Wayside
facebook page 7am; 724
652-6439, 4437 Mitchell
Rd., New Castle, 16105
Pastor Bryan Warner
(FPU coming in Oct.!)

**FELLOWSHIP IN
THE WORD**
1228 Rebecca St.,
New Castle, 16101
Sunday School 9:30am,
Sun. Worship 10:30am,
Mon. 6pm Youth,
Thurs. 7pm Bible Study

DISH TV \$59.99 FOR 190
Channels + \$14.95 High Speed
Internet. Free Installation,
Smart HD DVR Included, Free
Voice Remote. Some restric-
tions apply. 1-855-270-5098.

CHURCHES

**NEW HOPE FAMILY
WORSHIP CENTER,**
3 Lower Idlewild Dr.,
New Castle, Sunday
School 9:30am, Sunday
Worship 10:45am, Wed.
Bible Study 7:00pm,
Pastor Bill Whisel
724 654-8065

**NEW CREATION
CHURCH,** Sunday
Worship 10:30am,
Pastor Chuck Jewell,
Rear of First Assembly
of God, 2021 Pulaski
Rd., New Castle, 724
654-7952, www.new-creation-church.com

**LIFE CHANGING
MINISTRIES**
Sunday School/Bible
Study 9:30am; Sunday
Worship 10:30am;
Thurs. Youth Group
6pm; 2929 Mercer Rd.,
New Castle 16105,
724 652-4090
Pastor Bill Rupert

Fall begins Sept. 23

CHURCHES

**FIRST UNITED
METHODIST Church,**
135 Decker Dr., New
Castle; Sunday 9:30am:
worship, nursery
ministry, J.A.M. (Jesus
And Me) for ages 3-12;
724 658-5577

**NEW HOPE
WESLEYAN CHURCH**
Pastor Gary DeWitt,
2300 Pulaski Rd., New
Castle, 724 658-3019
Sunday School 9:45am,
Sunday Worship
10:45am; Hour of Power
Prayer 3:00pm;
Wed. Programs: Youth
and Children 6:15pm,
Adult Study 6:30pm;
Grief Share Classes,
call for information

HANDYMAN

**MOST HOME
REPAIRS,**
Senior Discounts,
Free Estimates,
Insured, PA112648
724 657-4567

HAULING

GENERAL HAULING
We Haul Trash, Clean
Cellars, Attics, Garages.
Haul Brush, Topsoil,
Limestone, Coal & Buy
Scrap; Jesus Loves You
724 658-0329

JUST JUNK IT
Removal of all
unwanted junk and
rubbish. No need for
expensive roll-offs.
Also estate, garage,
attic clean outs, free
estimates; 724 730-2668

PRACTICAL NURSING

**LENAPE Practical
Nursing at Lawrence**
Become a nurse in one
year! Scheduling for
Oct. & March; Info call
724 658-3583 ext. 7112
LCCTC, 750 Phelps
Way, New Castle

**[WANTED] CARS/TRUCKS
WANTED!!!** All Makes/Mod-
els 2002-2018! Any Condition.
Running or Not. Competitive
Offer! Free Towing! We're
Nationwide! Call Now: 1-888-
368-1016

Veterans Stand Down

"A Hand Up... Not a Hand Out"

Fri., Sept. 13 • 12noon-3pm

Serving Homeless Veterans,
Service Members, Their Families,
Community Members and Families in Need.

**Free Medical Screenings • Light Meal
• Organizations with Resource Info**

**and Referrals Available
Hygiene Products • Entertainment**

Cascade Park 1928 E. Washington St.,
New Castle • 724 658-7258 x1414, 724 656-2172

Now Stocking KREG
pocket hole jigs and
accessories!
Plus we do saw and
tool sharpening;
Snyder Saw Service
724 758-6782

FORMER AMISH Roof-
ers, experienced crews,
new roofing/re-roofing
with shingles or metal;
Call Chris Byler 724 202-
9747, 216 469-0322 cell,
PA#146758 ⁹⁻²⁷

ANTIQUE/CLASSIC Car to
sell? Advertise with us. You
choose where you want to ad-
vertise. 800-450-6631 visit macnetonline.com for details.

SELLING YOUR own prop-
erty? Advertise here and
in other papers like it - you
choose! Call MACnet Media
800-450-6631 for details.

GUN & SPORTING GOODS SHOW

SEPT. 28 (9AM-4PM) - SEPT. 29 (9AM-2PM)

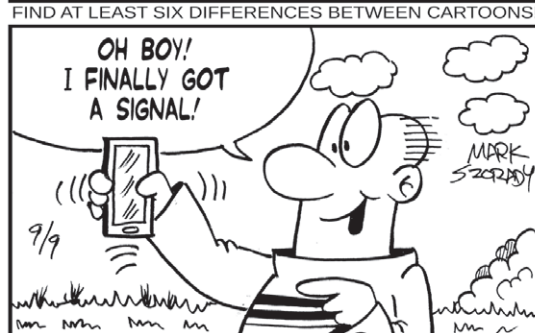
BUY • SELL • TRADE • BROWSE

**FREE PARKING • CONCESSION STAND • \$5 ADMISSION
(CHILDREN 12 AND UNDER - FREE WITH ADULT)**
www.HiddenValleySC.com

Hidden Valley Sportsmen's Club
268 Gilkey Road, West Middlesex, PA • 724-528-2700
(an IRS approved 501(c) non-profit organization)

DOUBLE TAKE

By Mark Szorady



ANSWERS: 1. BUTTON MISSING 2. CLOUD MOVED
3. SHIRT STRIPES DIFFERENT 4. MOUTH
DIFFERENT 5. HAIR DIFFERENT 6. WORD BALLOON

WORD PILE By Mark Szorady

COMBINE THE LETTERS TO MAKE TEN WORDS.
EACH WORD CONTAINS AT LEAST THREE LETTERS.

1. _____
2. _____
3. _____
4. _____
5. _____
6. _____
7. _____
8. _____
9. _____
10. _____



ANSWERS: HEM, HER, HERO, HOE,
HOME, HOMER, MORE, OHM, ORE,
ROE

© 2019 Mark Szorady. Distributed by georgetoon.com

I Should Have Gone To

**10% OFF
2 Services**

Choose any 2:
• Oil Change, Filter and Lube
• State Inspection • Brake Work
• Wheel Alignment • Wheel Balance
With this ad. No Other Discounts Apply.
Through Sept. 30, 2019.

**McCOY
TIRE & SERVICE**



GREAT SERVICE

401 S. Mill St., New Castle • 724 658-4771 • Mon.-Fri. 8:00-5:30, Sat. by appt. 8:30-Noon

Gilliland's Market

Est. 2014
Quality Meats & Groceries
Proprietors: Jamie and Dee Anglin

109 S. Market St., New Wilmington
Mon-Thurs. 9-5; Fri. 9-6; Sat. 9-4
724 946-3508 • gillilandsmarket.com

FRESH PRODUCE



Gatorade

28 Oz.

2 for \$4.00

Grab & Go Items



Pepsi

20 Oz.

2 for \$3.09

2 Liter

2 for \$3.50



Fresh & Ready SUBS



September Specials

Sept. 8 - Oct. 5

Gilliland's Own
Bulk Pork Sausage

\$2.29 lb.

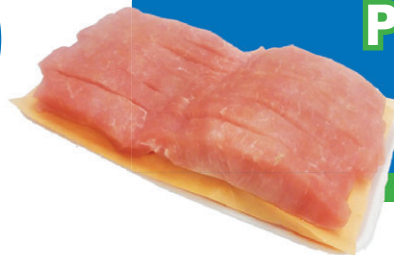
10 lbs. or more... \$1.99 lb.



Boneless
Pork Spare Ribs

\$2.49 lb.

Always Tender



Boneless
Butterfly Pork Chops

\$2.49 lb.

Always Fresh



DELI

Provolone Cheese

\$3.49 lb.

Turkey Breast

\$5.99 lb.

Sliced
Fresh



New Allergy Practice in New Castle



Welcoming
New Patients!

724-588-7531

Call Today
to Schedule

Francisco J. Cano, MD

Board Certified Asthma, Allergy
and Immunology Specialist

Wanted: chairs or seats
to use in fishing boat, in-
expensive; call or text 724
436-1908

Baby highchair, brand
new \$30; playpen, newer
\$25; 724 651-9616 leave
message



Mini Skid
Loader

Augers

Log
Splitters

45' Work
Platform

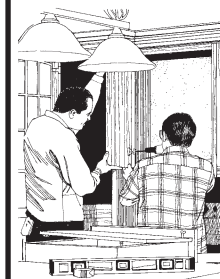


1015 Moravia St., New Castle
Mon.-Fri. 7-4:30, Sat. 8-12 **724 658-2400**
• 2976 E. State St., Hermitage • **724 981-5800**

2 Bolens weed whackers,
1 curved shaft, 1 straight
shaft, both run but need
work, \$25 ea. or both \$40;
724 654-9005

New Sherwin-Williams
Super Deck stain, 3021
Spice Deck Brown, new
\$36, asking \$20; 724 658-
4675

Custom Millwork



**Remodeling
Supplies**

Doors
Ceiling Tile
Schlage Door Knobs
Plywoods

**RELIABLE
LUMBER**



502 Sampson St., New Castle • 724 658-5533
Monday - Friday 7:30am-4:30pm, Saturday 8-noon