

# Weekly Bargain **WBB** Bulletin

October 11, 2024  
Edition 2738  
www.WeeklyBargainBulletin.com

## Storm Damage EXPERTS

*Don't make the mistake  
of hiring out of towners!*

**No Regrets... Hire Local!**

We work with your insurance  
company to take care of  
weather damage to your home.

**Relax! We're HERE!  
We've Got You Covered!**

We Offer Many Financing  
Options! Call Today!

## Shell RESTORATION

Roofing, Siding,  
Windows,  
Gutters & More

**800-663-8103**

2110 E. Washington St.,  
New Castle, PA

www.ShellRestoration.com

Free Estimates  
Fully Insured • PA105988

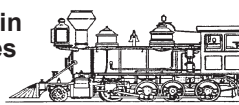
**500**

Top 500 2023  
of registered  
remodeling  
businesses  
in the USA



## We Buy and Sell Trains

- Good Selection of Train Sets and Accessories
- Shipping Available



• We Buy Old TRAIN\$ and TOY\$ •

### The Underground RAILROAD SHOPPE

1906 Wilmington Rd., New Castle  
Since 1985 • 724-652-4912

Hours: Wed., Fri. & Sat. 12noon-5pm  
Closed Sun., Mon., Tues., Thurs.

## COVELLI Transmission & Auto Inc.

**724-498-9705**

1025 S. Mill St., New Castle, PA 16101

40+ YEARS EXPERIENCE  
WE SERVICE THEM ALL



\$\$\$\$\$\$\$\$\$\$\$\$\$\$\$\$

## FOXWOOD AUTO SALVAGE Buying Junk Cars and Trucks Call Us Last for Best Price!

- Highest Prices - Paid In Cash!
- Selling Used Parts and Tires
- Quality Parts - Low Prices

24 Hours **724 774-3386**



## Auctions Pages 8 & 9

## DAN'S AUTO BODY & REPAIR

130 W. Long Ave., New Castle  
724 657-3647

Owner: Daniel McClure

## PA State Inspections

- Minor to major accidents
- Insurance estimates
- Brakes
- Exhaust
- Overall paint jobs
- Rust repair
- Tune-ups
- Oil Changes

Will waive deductible, Competitive prices  
[www.DansAutoBodyRepair.com](http://www.DansAutoBodyRepair.com)



©Randy Glasbergen  
www.glasbergen.com

"Class, who can tell me what I have preserved in this jar? No, it's not a pig or a baby cow... Could it be the last student I caught cheating on a test?"

## SHAFFER TREE SERVICE

- Land Clearing
- Tree Trimming
- Storm Damage
- Bucket Truck Service
- Chipper Service
- Snow Plowing

Over 50 Years Experience • PA085463  
"No Tree Too Large - No Job Too Small"  
Expanded Service Area! Free Estimates

**724-658-1060** Fully Insured  
Owned & Operated by Larry E. Shaffer  
"Best of the Best" 15 Years & Counting!  
[www.shaffertreeservice.com](http://www.shaffertreeservice.com)



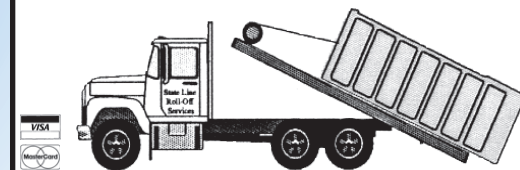
We Specialize In  
**Tree & Stump Removal**

**NEED A ROLL-OFF?  
We got you covered!**

## State Line Roll-Off

- 10 Yards
- 14 Yards
- 20 Yards
- 30 Yards
- 40 Yards

Call Today for Pricing  
**724 654-4408**  
under new management  
website:  
[www.statelinerolloff.com](http://www.statelinerolloff.com)  
email: [statelinerolloff@yahoo.com](mailto:statelinerolloff@yahoo.com)



Please Note:

No Mail Delivery  
on Mon., Oct. 14  
•• Columbus Day ••

Please mail early!

## HOME IMPROVEMENT

- Roofing •Siding
- Soffit and Fascia
- Gutters and Decks
- Exterior Painting
- Metal Roofs
- Weather Damage and Repair

**Dan McLaren**  
References,  
Free Estimates;  
724 667-6201  
or 724 730-0320

PA019211

## JLK LAWNCARE

Jeff Kneram, Jr.  
724-730-3574  
PA191786

- Fall Cleanup
- Grass Cutting
- Trim Hedges
- Mulching
- Brush Hogging
- Small & Large Land Clearing

## Highest Prices Paid for Junk Vehicles

Free Quotes  
Call or Text  
724 813-5480

CASH for Junk and  
Unwanted Vehicles,  
cars, trucks, SUVs,  
golf carts, etc. Free  
towing, same day  
service, God Bless;  
724 624-6165

Ad Blank and directions Page 15

## Your Local Source.

COMMERCIAL DUMPSTERS, ROLL-OFF BOXES,  
+ RESIDENTIAL GARBAGE COLLECTION



**AIKEN**

724-758-9400

[www.AIKENREFUSE.com](http://www.AIKENREFUSE.com)

LOCAL.  
RELIABLE.  
READY.

## JEWELRY REPAIRS

Diamonds Remounted  
Chain Soldering

Repairs done on-site  
30 years experience

**Gold Mind  
Jewelers**

**IN STORE  
RING  
SIZING**



122 E. State St., Sharon, PA  
724 342-5411  
Diamond and Gemstone Replacement

**the GroundsGuys** Landscape/Lawn Care Services  
 "We know you're busy, let us do the work for you"

- Hydroseeding
- Lawn Mowing •Edging
- Shrub/Hedge Trimming
- Retaining Walls •Patios
- Decorative Stone •Mulch
- Bed Creation/Redefining
- Bed Maintenance

**Seasonal Cleanup**  
**NEW Supply Yard!**

**724-766-6781** PA126771  
 www.GroundsGuys.com/ellwood-city

**The Garage Door Experts**

Residential Commercial  
 Service Repairs

**r.w. COX** Garage Doors PA002540

**724-658-7316 724-342-3667**

**STOP** Creditor Harassment Wage Garnishment Repossessions Foreclosures Judgments

**Emergency Help Now!**  
 Eliminate depression from debt **START FRESH**  
 Reorganize your life  
 We help people file for relief under U.S. Bankruptcy Code

**GO** Financial Recovery Keep House, Car, and Pension

**Free Phone Consultations**  
**Easy Payments**

We are a Debt Relief Agency / Law Firm

**Louis Pomerico, Esquire**  
 "Your Power of Attorney"  
 724 658-7759 • 1-888-605-2414

RUGER SEMI-Auto 10/22, 22LR, 10 shot, also BX 25 shot mag, Firefield open reflex site, red/green reticle, as new, \$450; 724-342-3430

REMEDIAL HELP for dyslexics and struggling readers of all ages; Norma in New Wilmington, PA 210-488-6667 10-11

**Cambio Roofing**  
 New Roofing • Roof Repairs

Soffit • Fascia Siding • Gutters

Tom Cambio  
**724-614-4259** or **724 714-6762**  
 PA183759

GAF® Certified Fully Insured Free Estimates

**BIBLE TRIVIA** by Wilson Casey

1. Is the book of Jeremiah (KJV) in the Old or New Testament or neither?
2. In a vision that convinced Peter to share the gospel, what were the creatures let down to earth in? Great sheet, Cloud, Well, Wind
3. Who was instructed to eat bread while he lay for 390 days on his side? Moses, Ezekiel, Methuselah, Samson

4. From Matthew 5, what did Jesus tell His disciples they were the salt of? His glory, Mankind, The earth, Conversation
  5. Who survived the bite of a viper as described in Acts 28? Paul, Matthew, John the Baptist, Stephen
  6. From Genesis 35, who died in giving birth to Benjamin? Anna, Leah, Martha, Rachel
- \*\*\*\*\*ANSWERS\*\*\*\*\*  
 1) Old, 2) Great sheet, 3) Ezekiel, 4) The earth, 5) Paul, 6) Rachel  
 ©2024 King Features Synd., Inc.

**Take Care of Business BEFORE WINTER**

- Garage Floors • Retail Areas
- Basements • Warehouses
- Storage Facilities • Restrooms

**Duralast Concrete Coatings:**  
 5x Stronger than Epoxy  
 Will Not Chip or Peel  
 UV Stable Polyaspartic  
 100% Anti-Bacterial • Salt and Oil Resistant

Call Today for a Free Quote!  
**SPECIALTY CONCRETE COATINGS, LLC**  
 PA170351 4076 Sandy Lake Rd., Sandy Lake, PA 16145  
**724-815-1977**  
 SpecialtyConcreteCoatingsLLC.com

**MEAT GUYZ**  
 1703 W. State St., New Castle  
 724 202-7380  
 Mon.-Thurs. 10-6, Fri. & Sat. 9-6, Sun. 9-Noon

**U.S.D.A. CHOICE or PRIME BEEF**  
 Steaks, Roasts, Kabobs, Brisket

**U.S.D.A. INSPECTED PORK**  
 Chops, Roast, Ribs, Whole Butts

**Best Bacon In Town!**

**We Have a Variety of Sausage Flavors**  
 New York Strips • Ribeyes  
 Manhattan Fillets • Kabobs  
 Seasoned Burgers  
**Stuffed Mushrooms and Stuffed Peppers**

Check out MEAT GUYZ on Facebook for **OnLine Buys**  
**In-Store Specials**  
**Recipes**  
**Tutorial Videos**  
 And a whole lot of **FUN!**

**meatguyz.com**

**Jewelry Repair**  
**••• We Buy Gold •••**  
 Taggart Jewelers  
 134 S. Main St., Slippery Rock • 724 794-6363

**The Garden Bug** Autumn garden tasks

- Gather seeds from your spent plantings; collect all dead and dying foliage.
- Compost any plant waste that is not diseased. If burning is permitted in your community, this will be an effective way to dispose of diseased plants.
- The autumn leaf fall can suffocate a lawn (especially any newly-established ones) if not often raked up.
- Planting cover crops, or spreading mulch over bare soil, can help prevent soil erosion over the winter. - Brenda Weaver

Sources: www.thespruce.com, wayne.ces.ncsu.edu

## R&R Contracting

724-987-3512 PA034593

- Remodeling • Roofing • Soffit & Facia
- Siding • Concrete • Sidewalks
- Porches • Decks • Tree Cutting
- Bathrooms & Kitchens • Additions
- Sewer & Water Lines • Fully Insured

### TOP DOLLAR

for your used and unwanted vehicles;  
724-510-1808

## Yard/Rummage Sale

**MULTI-FAMILY Sale:** Fri.-Sat., Oct. 11&12, 9am-3pm, 11 E. Hazelcroft Ave., Neshanock; Clothing, purses, Christmas and Fall decor, household, jewelry, Barbies, sports cards, NFL hats and t-shirts, furniture, and much more

**GARAGE SALE:** Fri.-Sat., Oct. 11&12, 10am-2pm, 707 Grandview Ave., Union Twp.; Lots of dollar items, some household items

**MULTI-FAMILY Indoor Garage Sale:** Oct. 11&12, 9am-5pm, 1815 Old Butler Rd., New Castle 16101; Antique furniture, collectibles, household, rocking chairs, dining table and chairs, vintage clothing, jewelry, small tables

**FUNDRAISING YARD Sale** for St. Jude's: Oct. 11&12, 9am-5pm 1276 Kimberly Rd., Sharon, PA; come see, come save!

**THRIFT & Thrive,** huge indoor second hand goods sale, Thursdays, Fridays, and Saturdays, 9am-1pm at 3279 East Western Reserve Rd., 44514, next to Molnar Farms 10-25

**GARAGE SALE:** Sat., Oct. 12, 9am-1pm, 600 Grandview Ave., Union Twp.; Holiday decorations, 5 gallon interior paint, Pittsburgh merchandise

**ATTENTION FLEA Market Vendors:** Boxes of items, some 1980s and 1990's toys, Steeler memorabilia, framed glass beer signs, Hoyt compound bow, Horton crossbow, much more; 724-992-4106 10-11

**GARAGE SALE:** Sat., Oct. 12, 9am-2pm, 3523 Meadowview Blvd., Apartment 1, New Castle 16105; Liquidating Estate

**RUMMAGE / GARAGE Sale:** Sat., Oct. 12, 8am-2pm; Sat., Oct. 19, 9am-12noon; Bag day Mon., Oct. 21, 9am-12noon; Volant Church, Main St., Volant 10-11

**RUMMAGE SALE:** Oct. 15&16, Tues. 9:30am-4pm, Wed. 9:30am-12noon, Bell Memorial Presby. Church, 610 Line Ave., Ellwood City 10-11

**HUGE RUMMAGE/ Bake Sale:** Tues., Oct. 22, 9am-6pm, Bake Sale 9am-sell out, Wed., Oct. 23, 9am-2pm \$2.00/bag, 118 McMillen Ave., Chippewa 10-18

**FLEA MARKET:** Sat., Oct. 26, 9am-1pm, Grace United Methodist Ministries (New Location), 135 Decker Dr., Neshannock; Available to purchase: vendors' merchandise, donuts, beverage, and lunch 10-25

**Post a Sale:** Up to 20 words, \$6.00 per edition, over 20 words: add 25¢ for each additional word after 20 words, per edition. Please call the WBB office, 724-654-5529 Mon.-Tues. 10am-5pm, Deadline: 5pm Tues.

**NOTICE:** If your ad requires your mailing address to be printed, you must pay for each word of your address. 1-20 word ad: \$6.00 per edition  
Ad over 20 words: \$6.00 for the first 20 words, plus 25¢ for each additional word after 20.

**- WANTED - TRAINS:** all scales, Lionel, MTH, Standard Gauge, HO, American Flyer. **Also Buying COLLECTIONS.** Will beat anybody's price; 724-667-1342

**SEASONED FIREWOOD** was special cut order 14" to 16" long face cord \$110 delivered no answer leave message; 724-556-9028 10-11

**LOOKING FOR** 55 gal. drum, steel, like new, no rust/dents, open top, clean inside/out; 724-740-1093 10-18

## Leasha's Contracting

**Masonry • Concrete Hauling**

**Foundation & Chimney Repair**

**General Construction**

**No Job is Too Small...No Job is Too Big**

Elliott • 724-971-0956 • PA181316

## Wednesday Morning BINGO

**Every Wednesday**

Doors Open: 9am  
Bingo Starts: 10am



## New Galilee Fire Dept.

Rte. 168, New Galilee  
For more information Call Patty 724 987-3096

## Andrew's Tree Service

- No Job Too Small
- Tree Removal
- Shrub Removal
- Storm Damage Cleanup
- Lot Clearing
- Dump Truck Service



PA#151989

**724-730-8172** • Fully Insured

Now Stocking KREG pocket hole jigs and accessories!  
Plus we do saw and tool sharpening; Snyder Saw Service 724-758-6782

**NOTICE:** There is no mail delivery on Monday, October 14, Columbus Day. The Weekly Bargain Bulletin Deadline FOR ALL ADS will be 5:00pm Tuesday.

## Electric MOTOR REPAIR and SALES

**724-301-0692**  
1544 State Rte. 956, Volant, PA 16156

**Fozza ENTERPRISES**  
PA#174760

**James Forrest PAINTER HANDYMAN**  
call/text: **724-968-9201** for a free quote!

**SPOOKY LOW Bargains** at Michaelangelo's Sunday Flea Market, 7am-3pm! DIY costumes, holiday decorations, tools, jewelry, collectibles, more! Sell inside \$10.00+! Thomasina's Eatery: Sunday special, full menu, good food! Rte. 422, 5 mi. West of New Castle, 724-652-6244. Oct. 20 Car Show!

## \$100 Discount

when booking in 2024 a Cash Bash or a Horse Race/Cash Bash Fundraiser



For more info and bookings, call **Rudy Spielvogel 724-971-4706**

**Buy Cars at AUCTION PRICES! 800-422-8884**

**2005 HARLEY-Davidson** Heritage Softail, less than 9,000 miles, exc. cond.; scaffolding; aluminum walkway; 100 ft. 600 volt wire; call Joe 724-674-1897 10-11

**2015 FORD Taurus,** 100K, runs exc. \$5,000; 2007 Suzuki XL7, runs good, inspected, \$4,000 obo; 2006 Charger, high output \$3,500; 2007 Toyota Corolla, runs good, inspected \$2,500; 724-510-1808

**ANTHRACITE COAL** stove by Hitzer, good cond. \$300; Can be seen at 888 Bowden Rd., New Castle 10-18

**HONEYCRISP APPLES!** Pumpkins, Mums and Fall Decor, Donuts and Cider, Baked Goods, Deli, Local Honey, & More! Apple Castle, 277 St. Rte. 18, New Wilmington, 724-652-3221. Mon.-Sat. 7:30-5:30

15 gallon Star crock \$75 obo; 724-674-3640

## P&J PAINTING & PRESSURE WASHING

Interior • Exterior • Free Estimates

**WE BLAST AWAY ALL OF YOUR DIRT AND GRIME, WITH OUR EXPERT POWER WASHING EQUIPMENT!**

John PA151491 724-730-3479

**MAKE \$\$\$ Easy!** Artists/Vendors: We'll sell your crafts, collectibles, artwork, products for you, starting at \$15.00 a month! You set up in our established gift shoppe to create your perfect spot! Call 724-652-0655 for details

**PROPANE 20 Pound Tank \$15**

No Coupon Necessary • Offer Expires 10-31-24

**GAS LIGHT** Manufactured Home Sales  
724-658-1000

Rte. 108, 1 mile East of New Castle

**Downsizing GOTTA go** large Kong dog crate, casio portable keyboard, dorm fridge, Pro-Form treadmill, Journey Solite scooter w/accessories, small camper amenities ideal Hunter's camper; call after 4:00pm 724-656-1353 10-11

## Yohman Concrete and Construction, LLC

- Concrete Sidewalks/Driveways
- Exterior Masonry • Exterior Carpentry Work
- Interior Remodeling • Finish Basements
- Stone Fireplaces • Chimney Restoration
- Basement, Cinderblock, and Concrete Repair
- Small Excavation Work
- Water Service Lines

**724-730-9007**  
PA#148727

## J&R Custom Upholstery



- Seats
- Decking
- Boats
- Pontoons

Owner: James Hochstetler

**724-475-8010**

456 Fredonia Rd., Fredonia, PA 16124

**Always Remember the Giver of  
All Gifts - Jesus**

## PAGLEY CONSTRUCTION



Roofing	Residential
Siding	Commercial
Decks	Free Estimates
Additions	Fully Insured
Painting: Interior & Exterior	
And More	

**Alex Pagley, Jr. 724-657-8313**

*God Bless and Have a Nice Day*

PA041687

## William E. Vavrock, CNHP Certified Natural Health Professional

Located Rte. 65, North Sewickley Twp.

By appt. only • 724 312-5635

### Natural Help for Optimum Health

*Good Health should be our most important asset.  
Why not take charge of your health today.*

Most people on my whole health program see all their numbers go down: sugar, cholesterol, blood pressure, and weight. The only thing that increases is your energy, quality of sleep, and general overall health improves.



## Weekly Bargain Bulletin

**New! Ad Drop Box  
2 Locations!**

Now you can drop off your ad to run in the Weekly Bargain Bulletin at 2 locations!

### Pet Parlor

4466 Mitchell Rd., New Castle 16105

**Neshannock Twp.**

Mon.-Fri. 10am-7pm, Sat. 10am-3pm

*Deadline: 4:00pm Tuesday*

### shippingdepot<sup>+</sup>

11 E. Washington St., New Castle 16101

**Downtown New Castle**

Mon.-Fri. 9am-4:30pm, Sat. 9am-12noon

*Deadline: 3:30pm Tuesday*



## Outdoor Opportunities

By COL (Ret.) Grey D. Berrier II

**Enjoy Each Part of the Hunt: Before, During, and After (Part 3 of 6)**

When I think about hunting, two trains of thought seem to dominate hunters' minds and subsequently their actions. There are those individuals who assume each and every time they head afield, there is a good possibility they will fill their tag, so they plan and prepare accordingly. Then there are other individuals who, while they are actively hunting, seem to be completely surprised if they see something and are often unprepared, if the moment arrives to take a shot and they actually harvest an animal. You owe it to yourself and show respect to the quarry you pursue to try your very best to be ready for "if and when" your encounter comes with the game you're pursuing. If the paradigm you operate from is "I'm going to fill my tag when I head out," your "Before Heading to the Woods" steps become more logical.

Picking up where we left off last week, there are a few last points under "Gear/Equipment Preparation" I want to cover. Always select appropriate clothing and gear for the weather, temperature, and how you plan to hunt. I've harvested numerous deer over the years because "another hunter" wasn't dressed properly, so they had to walk around to keep warm and they unknowingly pushed a deer to me. This shouldn't come as a surprise to any hunter, but the human face, your face, is the biggest giveaway to any animal when you are completely still. Have something to camouflage your face, either a camo stick, water-proof mascara, burnt cork, or head net; and your ratio of "close encounters" with game animals and other wildlife will increase significantly. If it's warm, I'm talking 50-degrees or warmer, think about taking a few one gallon milk jugs of frozen water in a cooler, left in your vehicle. When I walk out to get my deer cart, I bring the frozen jugs back in with me and place them inside the eviscerated deer or bear to start bringing down the temperature of the carcass, since this is key to having good meat for the table.

Turning to the subcategory of "Practice/Familiarization," there are several important items to tackle before heading afield. Practice with your firearm, muzzleloader, bow, or crossbow. Become proficient at different distances and in different positions (standing, sitting, kneeling, leaning against a tree, and prone). Very few shots at game are taken from a shooting bench with sandbags, which is how many hunters only practice at the range. Consider taking shots with your firearm, muzzleloader,

or even your crossbow with your opposite hand/eye, just in case the buck, bear, or turkey of a lifetime comes from your dominant side and there's no way you can make the swing without giving yourself away. If you're going to hunt from a tree stand or blind, practice shooting from a tree stand or blind. Not only shooting, but practice reloading your muzzleloader or re-cocking your crossbow from a tree stand or blind. Take the time to practice with your climbing stand, going up and down, and attaching your safety harness. Doing it for the first time, out in the woods, in the dark, is an accident waiting to happen. Also, practice with your calls, grunt tube, bleat can, and rattling antlers to competently and confidently talk to your intended quarry. Lastly, practice beforehand with any technology: GPS, range finder, etc. you take to the woods.

Then there are key components that fall into the subcategory of "Scouting/Stand Selection." If you plan on hunting private property, start off by securing the landowner's permission. Make scouting part of your preparations. That can be virtual by looking at maps or Apps, but nothing beats good old "boots-on-the-ground" walking the terrain and learning the lay of the land for yourself. Maps and Apps won't show you where game trails, rubs, scrapes, food sources, and thick cover are located, and you'll want to know. Beforehand, you might want to do some trail marking with flagging tape or reflective tacks for an easier walk in, especially in the dark. Advanced stand selection, tree stand placement, and potential climbing trees are all highly recommended to up the odds in your favor. Your preparation may include setting up trail cameras or prepositioning a deer cart or climbing stand (hidden and secured with a bicycle lock).

Finally, your preparations need to include things I label "Think of Others." Let someone know where you will be hunting and when you'll be back. Print off a map of each of your hunting spots for your loved ones and mark your parking spot, stand location(s), and the outer perimeter, if you'll be walking around. Consider taking your loved ones on a Sunday drive to your hunting spots to familiarize them with the locations and where you'll be parking. (It helps my wife associate a particular spot with the map from whatever county I'm hunting that day.) Lastly, coordinate in advance for assistance in recovering game.

Next week, we'll focus on "During Your Time Afield." God Bless, Be Safe, and Great Outdoors!

©WBB 2024

## HENLEY'S

TRUCK ACCESSORY STORE

**WeatherTech®  
and HUSKY®**

- Floor Liners
- No Drill Mud Flaps

- Bed Mats
- Bed Liners
- Bed Rugs

**724-652-1763**

## New Allergy Practice in New Castle



Welcoming  
New Patients!

**724-588-7531**

Call Today  
to Schedule

**Francisco J. Cano, MD**  
Board Certified Asthma, Allergy  
and Immunology Specialist

View our Media-Kit at our website for business pricing. You can also print our line ad form w/directions.

## BRYAN'S AUTO BODY & COLLISION CENTER

441 State Route 18, New Wilmington  
(Next to Kenneth's Beauty Salon)

**724-674-1466**



*From Rust Work to  
Major Collision and Restorations*  
All Insurance Work Accepted

### IN AN ACCIDENT?

Insist Bryan's Auto Body fixes your car,  
where quality comes first.

## J.E.L. Excavating

Sewer Tie Ins, Water Tie Ins, Septic Systems, Storm Drains, Basements, Footers, Driveways, Sidewalks, Lot Clearing, Ponds, Brush Hogging, Retaining Walls, Yard Installs, Swimming Pools and Most Other Excavating Needs.

**Experienced • Insured  
Free Estimates  
724-730-0980**

362 Enon Rd., Enon Valley, PA 16120



PA109851

## Beef Tenderloin

Cut Free & Packaged FREE

**\$16.99** lb.

Buy 1 Get 1 HALF OFF



## Whiting Family Foods



has the Award Winning Meats and Cheeses to make Delicious Meals!

Save some **\$\$\$\$!**

Feed Your Family  
-and- Fill the Freezer  
with what they deserve...

**THE BEST!**

## Ground Beef

1 lb. Package, Frozen

**\$3.99** lb.



## Pork Butt

Bone-In, 2 Pack

**\$1.99** lb.

Case

**\$1.49** lb.



## Home Grown, Farm Raised BEEF

No Preservatives!  
Cut to Order, Aged, Vacuum Sealed

**1/4 or 1/2 Beef**

**\$4.19** lb.

**Whole Beef**

**\$4.09** lb.



## Boneless Short Ribs



**\$4.49** lb.

Daily Choice

## Bacon

15 lb. box

**\$45.99**



## Beef Jerky and Beef Sticks

Try Weber Catering's "Family Time"  
Line of Take Home Catering  
Heat & Eat Specials!  
Catered quality foods in minutes!  
In the freezer section.

**Wow! Only \$2.49 lb.!**

Boneless  
Skinless

## Chicken Breast

Individually Vacuum Sealed,  
Approx. 40 lb.,

**\$99.99**



## Whiting Family Vision Care, PC

Abby Whiting, OD  
724-946-2620

2055 Mercer-New Wilmington Rd.  
New Wilmington, PA



## Whiting Family Foods

305 Easy St., Rte. 208, East of  
New Wilmington • 724-946-8633

Tues.-Wed. 9-4:30; Thurs.-Fri. 9-5:30; Sat. 9-2:30; Closed Sun.-Mon.

Specials valid Oct. 4-17, 2024 • While supplies last

First come, first served • email: Sam@WhitingFamilyFoods.com

Visit Our New Website! [www.WhitingFamilyFoods.com](http://www.WhitingFamilyFoods.com)



## MIJAVEC FEED & SUPPLY

### MUMS! Pumpkins!

Cornstalks, Straw, Gourds, Indian Corn,  
Pie Pumpkins, Winter Squash

Apples &  
Apple Cider

Fall Produce  
Available



FMNP Vouchers Accepted

Bird Feed, Suet Cakes, Wildlife Feed

- Allegheny Premium Hardwood Pellets
- De-Icing Salt
- Calcium Chloride

724-964-8933

Route 422, 1.5 miles East of PA/Ohio line

Class II Trailer Hitch Receiver fits 31 cars Draw-Tite 36408 like new \$150 firm; call for info 724-667-8937

White Weathered Barn Siding 1" thick 6-11" wide 3-10' long great for craft projects approx 150' \$1.00 per foot; 724-651-7080

**Wanted:**  
Paying Cash for  
Unwanted Junk  
Vehicles

**Buying:**

Catalytic Convertors,  
Batteries &  
Aluminum Wheels  
724-752-3320

Metal & Shingle Roofs, All Gutter Services  
Walk-In Shower, Vanity, Flooring, Kitchen,  
Siding, Soffit, Fascia, Electric & Plumbing,  
Decks and Repairs, Garages,  
Insulation: Attic, Wall, Ceiling

Any and All Remodeling  
Senior & Military Discount



724-944-7779  
PA079817 • BBB

SHUFFLE BOARD table, 9', with accessories \$300; 724-758-7963 10-11

10' Heavy duty alum. folding ladder great cond. \$80 obo; call 724-601-6735

## Roofing

Get a Better Price!

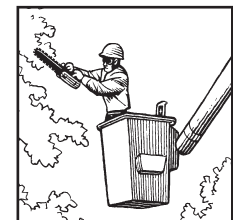
We do all kinds, 30 years experience;  
724-614-9165 Lou  
PA034825

## Reiber Tree Service

- Stump Removal
- Bucket Truck Service
- Lots Cleared
- All Tree & Shrub Work
- Tree & Shrub Planting & Feeding
- Storm Damage Cleanup,  
Complete 24 Hour Emergency Service
- Free Estimates
- Fully Insured
- 45 Years Experience

Call Ken  
724-992-8297  
or 724-615-1402

PA085660



## REWCON Home Improvement

Interior Home Remodeling • Painting  
Vinyl Flooring • Hardwood Flooring  
Call us for any other needs!

Free Estimates • Call to Book!

www.rewconpa.com  
Fully Insured • PA159593

**724-674-4460**

1995 MONTE Carlo, black, like new, never seen snow, garage kept, 57,000 miles, mag wheels, black leather interior \$15,000; 3 Kirby sweepers, \$30 each; 724-752-8816 after 5pm <sup>10-18</sup>

2013 KIA Soul, runs good, inspected \$2,500; 2016 Jeep Cherokee Latitude, runs good, inspected, \$6,000; 2017 Chevy Impala, new inspection, 100K, runs exc., \$7,000 serious inquiries only; 724-971-8869

## Sewer-Flo PA116728 Fully Insured PLUMBING

### Drain Cleaning

Hot Water Tanks • General Plumbing  
Will Open Any Residential Drain  
including main house line, no service call fee

**724 698-6386** "Drain won't Flo -  
You don't owe." Guaranteed!

### Strange But True by Lucie Winborne

• In a 2008 survey of British teens, 58% of the respondents believed Sherlock Holmes was a real person, while 20% said that Winston Churchill was not.

• The universe has a color, but it's not what you might think. Researchers at Johns Hopkins University took the average of light from over 200,000 galaxies. It turns out the universe is, on average, kind of beige. They named the shade "cosmic latte."  
• Amelia Earhart and Eleanor Roosevelt once sneaked out of a White House event, commandeered an airplane, and went on a joyride to Baltimore.

©2024 King Features Synd., Inc.

## Weekly Sudoku

by Linda Thistle

	8	6		9			3
	2		6		7		
4				5			9
2			3	6			5
		7	1				8
	9			7	3		
		5		1	2		
	3		4				6
1				7			9

**Puzzle Difficulty: ♦ ♦ Challenging**  
Place a number in the empty boxes in such a way that each row across, each column down and each small 9-box square contains all of the numbers from one to nine. ©2024 King Features. Answers on page 17

# PET-ober FEST

Prizes and Food • Animals Welcome

**Saturday,  
October 19, 2024**

**11:00am-1:30pm**  
At New Castle Agway

- Animal Costume Contest •
- Pumpkin Decorating Contest
- Coloring Table for Kids •
- Photo Booth •



Exclusive  
Exclusive Pet Food  
PET NUTRITION

**Buy One,  
Get One  
Half OFF**  
During This Event

**Chinese Auction** All Proceeds are going  
to the Lawrence County Humane Society



## New Castle Agway

101 East Division Street • wblive.com/agway  
Open: Mon.-Fri. 8-5, Sat. 8-2 **724 654-3841**



## New Homes Available

in Gas Light Village Starting at  
and Harbor Village **\$75,900**  
Mobile Home Parks Easy Financing

**Call 724-658-1000**

## Haunted Car Wash at CHILL'S WASHES

Oct. 12, 25, 26, 31 at Chill's EZ Kleen  
3340 Wilmington Rd., Neshannock

Oct. 18, 19 at Chill's Super Wash  
120 N. Jefferson St., New Castle

Check Facebook for Updates

chillscarwash.com everwash.com

## FALL into SAVINGS

2021 Jeep Renegade #6107,  
4x4, 80th Edition,  
23,000 miles, nice car **\$21,500**

2010 Ford Taurus #5946A,  
155,000 miles,  
new PA inspection **\$4,500**

2011 Ford Ranger #6110, 4wd,  
super cab, new PA inspection,  
fiberglass cap, 99,000 miles, **\$15,295**

2019 Hyundai Sonata  
39,000 miles, nice car, #6043 **\$16,995**

2016 Kia Forte EX #6120,  
new PA insp., 103,000 miles **\$9,995**

2014 Chevy Impala  
91,000 mi., new PA insp., #6122 **\$12,995**

2016 Kia Sorrento LX #6111,  
fwd, 84,000 miles, lifetime warranty **\$11,695**

2017 Dodge Journey SE #6113,  
fwd, 90,000 miles, 3 rows of seats **\$9,750**

2018 Chevy Equinox #6128,  
awd, 88,000 miles, new PA insp. **\$13,995**

2021 Chevy Trax  
2 to choose from, starting at **\$18,995**

2021 Mitsubishi Outlander Sport  
40,000 mi., all wh. dr., #6075 **\$18,295**

2019 Ford Fusion 2 to choose from  
STARTING AT  
**\$14,350**

Your New Car  
Alternative

Rte. 18, New Castle

Open until 7pm Mon. & Thurs.,  
Sat. until 4pm

G.O. CRIVELLI  
AUTOMOTIVE  
CERTIFIED PRE-OWNED

gocrivelli.com

**We Buy Cars Too!**  
Stop In For A FREE APPRAISAL

# MITCHELTREE BROS.

## LOGGING & LUMBER, INC.

### Turman Premium HARDWOOD PELLETS

Delivery Available  
**724-598-7885**  
You've tried the rest, now try the best!

**Pick Up Locations:**

- Mitcheltree Brothers, 8485 Mercer St., Pulaski, PA 16143
- JF Mill & Lumber, 1032 N. Cedar St., New Castle, PA 16105

**BATES SADDLE** English leather, hunter/jumper, s. 17.5 w/cover and stand, exc. shape, \$1,700; 3 pair of English leather show boots, \$150 ea.; 1 leather girth show strap \$75; 1 show helmet, 1 summer white helmet, 1 black helmet, riding gloves, spurs, show clothes adult s/sm., tack box w/misc. items, horse saddle cleaners, socks, etc., price nego.; 412-600-1720 <sup>10-25</sup>

For All Your Glass Needs

# CITY GLASS

Co. Inc.

1064 Beckford St., New Castle • 724-654-7241  
cityglasscoinc.com • 800-478-8188

With this ad you can save on **WINDSHIELD GLASS**

**\$50 OFF** your insurance deductible or  
**\$10 OFF** non-insurance deductible  
Some restrictions may apply

## A&M Roofing

All Types Roofs Installed  
Rubber Roofs - Gutters - Repairs  
**724-614-9165 or 724-658-6112**  
Winner of "Best of the Best" Roofers in New Castle • PA034825

**TRIVIA TEST ANSWERS:**

1. New Zealand, 2. Colorado, 3. Oxygen (46%), 4. Woodrow Wilson, 5. E, 6. Brazil, 7. A prickle, 8. Elton John, 9. Lucy Maud Montgomery, "Anne of Green Gables," 10. "The Lion, the Witch, and the Wardrobe" (Narnia), 11. Uber.  
©2024 King Features Synd., Inc.

by Gary Kopervas



## Even Exchange by Donna Pettman

Each numbered row contains two clues and two 6-letter answers. The two answers differ from each other by only one letter, which has already been inserted. For example, if you exchange the A from MASTER for an I, you get MISTER. Do not change the order of the letters.

- |                       |              |                    |              |
|-----------------------|--------------|--------------------|--------------|
| 1. Depart             | __ _ _ V _   | Rental agreement   | __ _ _ S _   |
| 2. Perry Mason's job  | L _ _ _ _    | Twain character    | S _ _ _ _    |
| 3. Lure               | __ _ _ _ C _ | All-inclusive      | __ _ _ _ R _ |
| 4. Lead the way       | __ _ _ _ D _ | Pretext            | __ _ _ _ S _ |
| 5. Carpeting option   | __ E _ _ _ _ | Men's hair stylist | __ A _ _ _ _ |
| 6. Afternoon tea cake | __ _ O _ _ _ | Play division      | __ _ E _ _ _ |
| 7. Not asleep         | __ _ _ K _   | Conscious of       | __ _ _ R _   |
| 8. Prom dress         | __ _ _ _ _ L | Configure          | __ _ _ _ _ T |
| 9. Rah! Rah! Rah!     | C _ _ _ _ _  | Gossamer           | S _ _ _ _ _  |
| 10. Chef's garment    | __ P _ _ _ _ | Ohio city          | __ K _ _ _ _ |

©2024 King Features Synd., Inc.

Answers on Page 20

## Landscaping Excavating and Ditch Witch

Complete Landscaping and Design

Specializing in **New Yards and Yard Repair**

- Low Maintenance Plants
- Retaining Walls
- Driveways
- Patios

Specializing in **Small & Large Excavation Small Drainage Problems**

- Footers: Water, Gas, and Sewer
- Demolition
- Driveways

Residential • Commercial • PA033956

Fully Insured • **724-674-8205** • Reasonable Prices

724-652-7884 Office, leave mess. 724-730-3444 Cell, immed. response

## CRIT-R-DONE®

### NUISANCE WILDLIFE & PREDATOR CONTROL

767 High Hill Rd., Pulaski, PA 16143

**Groundhogs In Your Garden?**

Call Us Today!  
We will remove those pesky critters from places you don't want them!  
Commercial & Residential Animal Removal

**Raccoons In Your Chimney?**

**Dead Deer Removal, for a fee**

**Metal & Shingle Roofs, All Gutter Services Walk-In Shower, Vanity, Flooring, Kitchen, Siding, Soffit, Fascia, Electric & Plumbing, Decks and Repairs, Garages, Insulation: Attic, Wall, Ceiling**

Any and All Remodeling Senior & Military Discount

**724-944-7779**  
PA079817 • BBB

## Pulaski Flea and Farmers Market

**Open Every Thursday 6:00am April - November**

Single Space just \$8.00

**8417 Mercer St., Pulaski, PA 16143**  
1/2 mi. North of Pulaski, Rte. 551  
724-598-7885

## TRIVIA TEST?

by Fifi Rodriguez

- MOVIES: Where was "The Lord of the Rings" filmed?
  - TELEVISION: What is the setting for the animated series "South Park"?
  - SCIENCE: What is the most abundant element in the Earth's crust?
  - U.S. PRESIDENTS: Which president proclaimed June 14 to be Flag Day?
  - MATH: Which letter is contained in every odd number when it is spelled out?
  - GEOGRAPHY: Both the Equator and the Tropic of Capricorn pass through which country?
  - ANIMAL KINGDOM: What is a group of porcupines called?
  - MUSIC: Which British singer/songwriter helped create many songs on "The Lion King" soundtrack?
  - FAMOUS QUOTES: Who wrote the line about fall, "I'm so glad I live in a world where there are Octobers"?
  - LITERATURE: Which children's book features a fictional world where it is always winter but never Christmas?
  - AD SLOGANS: Which ride-share company's slogan is "Move the way you want"?
- <<-Answers Above

## AUCTION PAGE

### HUGE FROZEN FOOD & GENERAL FOOD AUCTION

Rte. 224, 3 miles east of Poland, Ohio 44436  
**THURSDAY, Oct. 17, 2024 • 6:00pm**  
 Doors Open at 5:00pm • Bring Coolers

Terms: Cash, good check, MasterCard & Visa accepted. 13% buyer's premium with 3% waived for cash or check. One of every item selling absolute.

*All American Auctions*  
 By *Mark Miller*  
 AUCTIONEER  
**330-507-7600**

Mark Miller, Auctioneer OH Lic. # 2005000140

### DC Auction Online Only

**New Galilee Consignment**  
**Soft Closes @ 7:00pm Wed., Oct. 23**  
 Including: Christmas Décor, cot, John Deere, canopy, tools, bandsaw, air compressor, heater, cleaning products, furniture, collectibles and more.  
**Pickup Fri., Oct. 25, 3pm-7pm** at  
 800 Centennial Ave., New Galilee, PA 16141  
 To view auctions and bid, Go To: [dcauctions.hibid.com](http://dcauctions.hibid.com)  
 DC Auctions AY002409 • Like us on Facebook

**Residential/ Light Commercial Real Estate on Rte. 19 Zelenople PA**  
**Saturday, October 19th at 9am**  
**118 Saltarka Lane, Zelenople, PA 16063**  
**1.852 Acres- Farm House- Horse Barn- Saddle Shop**  
**REAL ESTATE and Contents**

Prime Location- Between Rte 19 & I-79. Southern Zele- just North of Cranberry. On-Lot Well-City Sewer.

Fine Antiques/Farmhouse Furnishings. Contents of Century Home. Saddle Seat Apparel/Western/Hunt Seat-Saddle/Tack Shop-New Apparel/Saddles/Tack- Accessories, Hats, Boots, Etc. Full retail shop Contents/Fixtures. 40ft Enclosed Retail Trailer w/Living Quarters. Used Horse Tack & Equipment. **30' Cabin Cruiser-Lake Erie/River Boat & Alum trailer.** 21' Weekender Boat & Trailer. 1979 Cadillac Seville. Garage Full of Tools-Torches, Welder, Generator, Snap On Toolbox Loaded. Tons of Tools.

SMALL Ad-BIG Auction. Prime Location- House-Barn- Shop- Bldgs- loaded!

Terms of REAL ESTATE: 10% Buyer's Premium. 10% Nonrefundable down payment due day of sale with balance due in 60 days. Go to: [auctionzip.com](http://auctionzip.com) ID# 8930 for more information/Pictures.



**DUKE WHITING**  
 Auctioneer  
 Complete Auction Service  
 305 Easy St., New Wilmington, PA 16142  
**(724) 301-0319**

PA License AU-003437-L • OH. License 57199670209  
[www.whitingauctions.com](http://www.whitingauctions.com) & [www.auctionzip.com](http://www.auctionzip.com) #8930

### Classic Estate Collection

**Wednesday, October 16th at 4pm**  
**Whiting Auction Barn**

305 Easy Street, New Wilmington, PA 16142  
 Vintage Pyrex Nesting Bowl Set, Sunflower, Spring Blossom & more. Jadite, Corning-ware, Fiesta. Lifetime Pots. McCoy, Tom & Jerry Bowl, Pink Depression-Jar w/lid. Plastic Aunt Jemima/Uncle Mose S&P, Syrup. Milk Bottles- Horvath Dairy Sharon PA & others. Many Cardboard Milk Bottle Caps. Vintage Alum Pitcher & Drinking Glasses. Green and Red Handle Vintage Kitchen. Wendell August. **Antique Bear Trap.** Cast Iron - Griswold, Wager Ware & others. **Pennzoil Can,** Old Oil Cans, Oilers. **Keen Kutter** Crank Meat Grinder. **Ratchets/Sockets- 1/4' to 3/4' Drive.** Big Ratchet. Toolbox. Hand Tools, Power tools, Battery Charger, Belt disc Sander, Bench Grinder, Cordless Set. Shop Vac. C-Clamps. Smith-Life-time cutting torch & tips. Precision Miter Saw. **Vintage Coleman Cooler,** Picnic Basket-Hand Woven, Old Cameras. **Books- Winchester,** Gun Books, Hunting, Deer World, Muskets, Classic Car books. Civil War, Pennsylvania, Local History Books. American Rifleman-1950's-60's-Collection. 1960's-70's & later PA Game News-more. **Old Farm Toys: ERTL JD 1928 "GP"** on Steel Wheels- in box. **5088 Black Stripe w/box. Farmall 1466 Turbo w/duals-** used. Lincoln Logs. **Tonka Strong Arm,** Tonka Trucks, Model Railroad- **Lionel, American Flyer,** Plasticville, etc. Brass Baby Doll Rocker. Remote Control Micro Helicopter NIB. Vintage Toys. Antiques (Bottles, Advertising, Marbles). Movie Posters. Desk New in Box. Car Dealership Items - Sales Brochures. Tons of Vintage Records. Modern Toys, Vintage Games, 1960's tricycle. Still Finding more - another Building -full of boxes/totes yet to go thru. **Zippo Lighters & others. Records-LP's-Albums. Old Fishing Poles- Rods & Reels- a few old wooden Lures & such... NOS Fly Rod Set.** Antlers. **Knives:** Sharps Cutlery, Sling Blade Mongoose, Valley Forge Damascus, Deer Skinner, Tactical-All NOS. Sword. **Vintage-Used-Sharp Butcher Knives- Hand Meat Saw.** Coins: Old **\$5 Gold Liberty,** Modern 1/4 oz **\$5 Gold Commemorative Coin.1893-cc, 1879-cc,** and other Silver Dollars, Currency, Type Coinage... **Guns:** Win mod 70 Fthwt 270 w/ Redfield. Rem mod 700 30-06 CDL SS- Laminated w/ Leupold. Ruger 'Boat Paddle' M77 MKII SS 270 w/ Simmons. Savage mod 110 300 Win mag w/scope. Henry 22 Silver Boy Golden Eagle edition NIB. Henry 22 original pump- in box. Win mod 120 youth 20ga DU Engraved. Old Daisy Model III BB Gun. Browning "Boss Vortex" Bow w/Tru Glo optic. Ammo Cans. Lots of Ammo. All FFL Laws Apply - Estate Family Handles firearms. Terms of Sale: 5% Buyer's Premium, waived for Cash or local Check. Go to [auctionzip.com](http://auctionzip.com) ID#8930 for pics and more.



**DUKE WHITING**  
 Auctioneer  
 Complete Auction Service  
 305 Easy St., New Wilmington, PA 16142  
**(724) 301-0319**

PA License AU-003437-L • OH. License 57199670209  
[www.whitingauctions.com](http://www.whitingauctions.com) & [www.auctionzip.com](http://www.auctionzip.com) #8930

**Roofing:** Metal & Shingles / Siding, Soffit & Fascia  
**Bathrooms:** Complete Remodel, **Walk-In Showers**  
**Decks:** New or Repair, Handicap Ramps  
**Garages and Pole Buildings •All Gutter Services**  
**Kitchen:** Full Remodel, Floor, Sink, Faucet, Other Repairs  
**Insulation:** Walls, Attics, Ceilings  
**Plumbing and Electrical**



**724-944-7779**  
 A+ Rating with the BBB  
 PA079817

*Any & All Remodeling*  
*Senior & Military Discount*

**CHAIN SAW CHAIN** and wood and metal Band Saw Blades made to size. Snyder Saw Service 724-758-6782

**FREE: BABY** Kittens 8 weeks old litter trained; call 724-657-0124 leave message <sup>10-11</sup>

### Laszlo Plumbing and Heating

**Call for Furnace Safety Checkups**

**Water Heaters** Call Today! **724-758-5610**  
 168 Portersville Rd. Ellport, PA  
**Installation & Service** Free Estimates

PA048990



**Water Heaters**

Call Today!  
**724-758-5610**  
 168 Portersville Rd.  
 Ellport, PA  
**Free Estimates**

**NOTICE: There is no mail delivery on Monday, Oct. 14, Columbus Day.** Deadline: 5pm Tues.

**2007 HYUNDAI** Santa Fe, AWD, 97,000 mi., exc. cond. w/service record, runs great \$4,900; 724-312-2289 <sup>10-18</sup>

**Not enough Auctions** for you, eh? How about you take a little gander over at page 9.



**Junk Removal Services**  
**Call Tony**  
**724-813-5480**

Estate Clean Outs  
 House and Garage Clean Outs  
 Bulk Item Removal • Curbside Pick Up  
 Fast Friendly Service • Free Estimates

### HONEYCRISP APPLES!

Pumpkins, Mums and Fall Decor, Donuts and Cider, Baked Goods, Deli, Local Honey, & More!  
 Apple Castle, 277 St. Rte. 18, New Wilmington, 724-652-3221.  
 Mon.-Sat. 7:30-5:30

### SOCIAL SECURITY DISABILITY

Has your claim been denied? Call Attorney Pamela Miller 724-656-1555

No Recovery - No Fee

**PINE BEDROOM** Set, King size frame, 2 dressers, 1 mirror \$200; 570-460-2129 <sup>10-18</sup>

**SEAMLESS GUTTER** and Downspouting Installed; Call Chris Byler 724-202-9747, 216-469-0322 cell, PA146758

**Having an Auction? Post it in the Weekly Bargain Bulletin!** 724-654-5529  
**Auction Deadline: 5pm Monday**

### LIVE & ONLINE AUCTIONS BY BAXTER AUCTIONEERS

**LIVE CONSIGNMENT AUCTION**  
**TUESDAY, October 15**  
 800 Centennial Ave.  
 New Galilee, PA 16141  
**5:30 AUCTION START**

**Live New Merchandise Auction**  
**Thursdays**  
 4321 SR7  
 New Waterford, OH 44445  
**6PM Auction Start**

**REAL ESTATE AUCTION**  
 ACCEPTING PRE OFFERS  
 4BR 2BA HOME W/ 7 ACRES IN SOUTH BEAVER TWP - BLACKHAWK SCHOOLS  
 ONLINE AUCTIONS @ [BIDBAXTER.COM](http://BIDBAXTER.COM)  
 ACCEPTING REAL ESTATE & ESTATES  
 AUCTIONEER ERINN BAXTER  
 AU005968 / 2023000250  
**724-601-3096**



October 11, 2024

Office: 724-654-5529 • Read the Paper Online at [www.WeeklyBargainBulletin.com](http://www.WeeklyBargainBulletin.com)

9

**NOTICE: There is no mail on Monday, Oct. 14, Columbus Day.**  
Deadline: 5pm Tues.

**30 BANQUET Chairs,** 6 folding tables; Twin bed w/pullout, twin bed complete; 724-856-9337

**LOGS FOR Firewood,** free, you must cut and haul, Neshannock Twp.; 724-651-7045 <sup>10-11</sup>

Neshannock Twp. Police Department Tip Line, call or text 724-761-4445, non-emergency use only

Lawrence County Drug Task Force, make an anonymous tip, toll-free 855-684-6116

You seriously **Want More Auctions?** Then maybe you should check out page 8.

## AUCTION PAGE • AUCTION PAGE • AUCTION PAGE • AUCTION PAGE

### Absolute Estate Auction • REAL ESTATE & CONTENTS

Saturday, October 19 @ 10:00 A.M.

415 Woodland Ave., Grove City, PA 16127

**Featuring:** A Single Family Red Brick 2 Story Home with 3 Bdrms, 1 Bath, Lg Living Room & Dining Room, Kitchen, and an Enclosed Sun Room. There is also a Rather Lg Attic that Could Be Considered an Extra Bdrm or the Third Floor. A Detached Garage, Full Size Basement with Laundry Area Completes This House. The Exterior Brick and the Interior Hardwood Floors Make this Home a Solid Investment. This is a Great Starter Home with a Solid Foundation. The Lot Size is Approx .2 Acres and it is Located Directly Across from the Grove City Christian Academy. This Unique Home also has Lg Back Yard. The House is Located in a Family Oriented Neighborhood. Don't Miss This Opportunity To Own A Home in the Boro of Grove City.

**Terms on RE:** 10% Non-Refundable Depo on the Day of the Auction. Balance in 45 - 60 Days or Closing. 10% Buyers Fee Applies to the Real Estate Only.

**Interesting:** 2010 Ford Ranger - Good Title w/52,000 Miles, Boat on Gator Trailer w/Title, Blow Molds, Ceramic Christmas Tree & Some Unusual Early Toys.

**Collectibles & Curiosities:** Blow Molds: Lg Santa, Santa Face, Candle, Snowman & Soldier; Early Christmas: Bulbs, Ornaments, Elves, Gurlay Candles, Stands & Lefton Angels; Sterling Silver Weighted Candle Sticks, Woodstock Typewriter, Blue Snowflake Pyrex Casserole, Elekrika Enamel Sign, Lemaire Fabt Opera Glasses, Fostoria Coin Dot Compote, Oval Dish & Ashtray, Cranberry Crimped Hobnail Vase, Orange Crackle Glass & Amberina, **Advertising:** National Union Radio Tube Salesman Trunk, 1973 Love Loaf, Silverama RCA TV Cardboard Sign, Airlines, RCA Code of Ethics Display, All State Motor Oil Banks, 1st Seneca Bank Bag, Spartan TV Flag and Grove City/Slippery Rock Ephemera; James Bond & Gomer Pyle Cards, Keys, Dietz Red Globe Traffic Lantern, Vtg Radios & Cameras, Quilts, Yearbooks, Microphones, NOS Hi-Jacs Glass Coasters, Books, White Sewing Machine, Foreign Paper Money, Wood Items, Pink/Green Depression, Comic Books, Lucite Seahorses, German Cuckoo Clock, Ruby Red, Masonic Lodge Pins & Coins, Chalk Horsehead & Victorian Man, Spoon Collection, Pottery, German Beer Steins, Alum & Pewter, Wendell August Forge, Roseville Vase, Flashlights, Magazines, Army Trunk, Suitcases, Scouting: Books, Handkerchief, Mess Kit, Hats, Tie Clasp & Books; Dial Telephones, 1980's Baseball Coins, Pocket Knives, 45's & Albums, 3' Drink Coca Cola Light, Radio & TV Electronics Books, Flat Screen TV, Michelob Beer Sign, Alligator Letter Opener, Cast Book Ends, American Racer Sled, Juice Glasses, Postcards, Cookie Cutters & More.

**Furniture & Appliances:** Sm Ladies Desk, Round Parlor Table, Magazine Rack Stand, Wood Plant Stand, Corner Storage Cabinet, Early Chairs, Buffet, Illum Curio Cabinet, Drop Leaf Kitchen Table w/ Chairs, Sofa Table, 4 Drawer Dresser, Early Dresser w/ Mirror, Lane Cedar Chest, Rocker, Sheet Music Cabinet, Industrial Chairs, Appliances: Onn Roku TV, Kenmore Ceramic Top Stove, Whirlpool Fridge & Chest Freezer & Etc.

**Toys:** Tonka Flat Bed Truck, Matchbox Cars, Midge Toy Trucks & Cars, Plastic Army Men, Kenner Color Slides: Flintstones, Snagglepuss, Auggie Doggie, Huckleberry Hound & More; Cap Guns, Yo-Yo's, Puzzles, Marx Ho Train Set, Eldon Over Under 8 Race Track, The Invisible Man Learning Kit -1959, Getaway Chase Game, Kenner's Motorized Home Workshop, Board Games, G.I. Joe Marine Paratroop Game, Kid Telescope, Poker Chip Holder, Snake Eyes Gambling Game & Etc.

**Tools & HH:** Wrenches, Hatchet, Axe, Sockets, Fold n' Store Bike Carrier, Craftsman Air Compressor, 450 Amp Jump Start Power Pack, Folding Shovel, Reese Ball & Hitches, Cabela's Bike Carrier, Propane Heater, Wood Toolbox, Flood Lights, Hose Nozzles, Step Ladder, Metal Craftsman Machinists Box, Corelle Dishes, Coleman & Playmate Coolers, Bikes, Lifetime Tables, Card Table & Chairs, Fishing Poles & Reels, Small Tents & Tarps, Portable Heater/Fireplace w/ Remote, Alum Propellers, Canon Copier, GPX Cassette/CD Player w/ Speakers, Steelers Items, Early NOS Men's Shirts, New Men's Shoes, Southwestern Blanket & A LOT More.

**Terms:** Cash or PA check; Visa, MC or Discover has a 5% fee.  
Visit [bullocksbidnbuy.com](http://bullocksbidnbuy.com) "Current Auctions" for More Info & Pictures.

Estate of: David Arthur McCalla

BULLOCK'S BID 'N BUY

WE SPECIALIZE IN REAL ESTATE SALES AT AUCTION

DARLENE BULLOCK AU5406/2023000180

MARIBETH MEALS AU006221

724-372-1066 • MEMBER PAA

[www.bullocksbidnbuy.com](http://www.bullocksbidnbuy.com)



Having an Auction? Post it in the **Weekly Bargain Bulletin!** 724-654-5529  
Auction Deadline: 5pm Monday

**Onsite - Woodshop - Tools - JD 430  
Lawn & Garden**

Thursday, October 17th at 4pm

8178 High Street, Burghill  
(Orangeville), OH 44404

**John Deere 430 Diesel-** Hydro- Pwr Steering- Pwr Lift- 3pt- PTO- 60" Deck- Dual Remotes - Independent Rear Wheel Brakes- Differential Lock. Befco 3 pt Hitch Tiller- 4 ft. 3pt Hitch leaf vac & Trailer. **Delta Unisaw 10"** Tilting Arbor. Delta 13" Two speed- Finishing Planer. Powermatic 60 Joiner 8" with 72" bed. Reliant Belt/ Disc Sander. DeWalt Router & table. Delta 10" Pro Radial Arm Saw. Delta B.O.S.S. Shopmaster. Makita Saw. Shop Fox upright Band Saw. 12 speed HD Drill Press 726. DeWalt Hollow Chisel Mortiser. Bosch 3 1/4" Planer in Box. Old Wood Planes-Hand Planes -Block, Molding Planes. Old Levels. Forstner Bits, Molding Bits, Shaper Bits, Router Bits- Tungsten Carbide Tipped Set. Template guide kit. Delta Sharpening Center. Rockwell Delta Wood lathe. Wood Turning Tools. Paslode Finish Nailer. Craftsman Nailer Kit. Craftsman & Porter Cable Drills. DeWalt Sander. Craftsman 1500 Air Comp, air tank. 6" Bench Grinder. Tap and Die Set. Bit Sharpener. Reciprocating Saw Outfit, Circular saw. Saw Blades. Hand Saw, Hand Sander, Router, Biscuit Joiner. Hardware. Pipe Clamps. Hand tools. Sanders, Hand/Power tools. Ladders. Wood Working Books. Stains Paints. Honey Jars, Jugs. Handmade Chess Board. Artwork. Lifetime Folding Table. **John Deere Tin Thermometer.** 4-Wheeler -2001 **Honda TRX 400 EX.** Tires. Po Trico Sports Road- Porttue Handmade Bike. Fiction BMX bike BMX Trick Bike. Toro 421 Snowblower. Small Roller. Tandem axle trailer. 500gal Poly Tank. **Snap-On Tool Chest** - loaded. Snap-On, S&K, Proto, MAC. S&K Big Wrenches. Wright Impact Sockets. Channel Locks, Hammers, Impact, Sockets, Grease Guns. Organizers, Lawn & garden tools. Lincoln AC 225 Welder. Homelite E-2 Chainsaw. Sears Portable Air Comp. Big Anvil Vise. Swivel Bench Vise, Bench Grinder, Big Puller. Floor Jack, Jump Box 12v. **Motorcraft Ford Quality Parts-** Metal Sign. **Vintage Frigidaire** GM Cold Wall Control- made by General Motor - Works. Quick List - More... Terms of Sale: 5% Buyer's Premium, waived for cash or local check. Go to: [auctionzip.com](http://auctionzip.com) ID# 8930 for more information



**DUKE WHITING**

Auctioneer

Complete Auction Service

305 Easy St., New Wilmington, PA 16142

(724) 301-0319

PA License AU-003437-L • OH. License 57199670209  
[www.whitingauctions.com](http://www.whitingauctions.com) & [www.auctionzip.com](http://www.auctionzip.com) #8930

**Professional  
Helping Hands**  
"Going Green since 2013"

**Gutter Repair  
Gutter Replace  
Hauling Services  
Junk Removal  
Lawn Mowing**  
Ask for Charles  
724-391-4050  
Cell 724-714-9192  
PA101671

## HIRING

**Your Opening Could  
Be Here!** 724-654-5529

**PART TIME CDL Drivers** wanted. Call Adam at 724-333-0320. <sup>10-18</sup>

**TRAVEL THE country** on our dime! Looking for people to prepare and guide balloons in parades, call for details; 724-658-1408 <sup>10-18</sup>

**PARTTIME Handyman** or woman who likes landscaping, mowing, cleaning equipment, assist around the house, a good helper for maintenance work, starting \$15/hr., work is not hard; 724-730-6685 <sup>10-11</sup>

**CDL TRUCK Driving** instructors, starting at \$30/hour, must have 5 years minimum driving experience, set your own schedule, part-time, New Wilmington; 724-946-2153 <sup>10-11</sup>

**NESHANNOCK TWP.** School District seeking full time bus drivers, CDL training opportunity avail.; 724-856-4604 <sup>10-18</sup>

**WANTED: PERSON,** light yard work, New Castle area, references, serious inquires only, speak slowly, leave name, phone number; 724-652-1071

**PART-TIME Drivers** Needed; Call Adam 724-333-0320 <sup>10-18</sup>

**GENERAL HELPER** Needed, \$10/hr., for yard work, general maintenance, experience not necessary, transportation available; 724-698-3818 or 412-689-0782 <sup>10-11</sup>

**Design Your Dream Building Today!****Pole Buildings and Garages**

PA3031

**KNEPP BUILDINGS, INC.****814-382-0392** • www.kneppbuildings.com

**LAND OWNERS:** We buy standing timber, select cutting or we can manage your wood lot for deer habitat; please call 724-674-1062 <sup>11-22</sup>

**1978 CORVETTE,** FL car, light blue, new engine, plus original engine, 4 speed, antique plates, 9,000; 724-601-9989 <sup>10-18</sup>

**CRAFTY SISTERS DESIGN**

Tumblers, Mugs, T-shirts, DTF and Sublimation Transfers. Any occasion banners, custom party decorations and much more!

FaceBook.com/craftysisters221

**724-510-7455**

**COMPASSIONATE ELDERLY** Care, in New Castle and surrounding areas, experienced, references available; 724-730-0308 <sup>10-18</sup>

**CALL MOORE CDL** Driving Academy! We will train you on your time - any day of the week! 724-946-2153, contract trainers <sup>10-11</sup>

**amanda's hair & wig salon****Amanda Rodgers**

2000 Wilmington Rd., Suite B  
New Castle, PA 16105 • 724-202-7071  
amandashairandwig@gmail.com

**98 DODGE 4x4** Dakota w/cap inspection till 6/2025 mileage 128,257 \$3,900 obo; JD flatbed wagon \$650; 724-652-9018 <sup>10-18</sup>

**WANTED: LAWN** and Garden Tractors and Attachments: Cub Cadet, John Deere, plus other brands considered; 724-964-3069 <sup>10-25</sup>

**Weekly Bargain Bulletin****New! Ad Drop Box 2 Locations!**

Now you can drop off your ad to run in the Weekly Bargain Bulletin at 2 locations!

**Pet Parlor**

4466 Mitchell Rd., New Castle 16105

**Neshannock Twp.**

Mon.-Fri. 10am-7pm, Sat. 10am-3pm

Deadline: 4:00pm Tuesday

**shippingdepot+**

11 E. Washington St., New Castle 16101

**Downtown New Castle**

Mon.-Fri. 9am-4:30pm, Sat. 9am-12noon

Deadline: 3:30pm Tuesday

**COMMUNITY HAPPENINGS**

**OCT. 11:** Veteran Stand Down, 12:30pm-2:30pm, Free for Vets and Service Members: Medical screenings, haircuts, hygiene products, boxed meal, resource info/referrals; Cascade Park 1928 E. Washington St., New Castle

**OCT. 12:** Square Dance, \$10 person, food available 6pm, dance 7pm-10pm, after party till 11pm; Liberty Grange, 3067 Harlansburg Rd., New Castle. 724-674-2621 <sup>10-11</sup>

**OCT. 12:** We're Back! All you can eat Breakfast, 8am-10am, donation adult \$9.00, child 4-12 \$6.00, 3 and under free; Savannah Methodist Church, 84 Savannah Gardner Rd., New Castle <sup>10-11</sup>

**OCT. 12:** Takeout Soup Sale, 11am-2pm, \$7.00 quart, Soups: Vegetable Beef, Vegetarian Vegetable; Liberty Grange, 3067 Harlansburg Rd., New Castle; pre-orders 724-674-2621, 724-654-0379 <sup>10-11</sup>

**Post your Event Here!**

**OCT. 13:** U.S. Navy Birthday (10-13-1775) "Not Self But Country"

**OCT. 13:** Divine Grace Parish hosting Free Community Baby Shower, 1pm-4pm, register before event; Holy Redeemer Church, Ellwood City; 724-494-1552

**OCT. 13:** Fall-O-Ween Jesus, 3pm-7pm, wear your costumes, free event; Maitland Lane FMC, 121 E. Maitland Ln., New Castle, 724-654-4979

**OCT. 14:** No mail delivery today, Columbus Day! Please mail early! Time sensitive ads, please call the office and use debit/credit card for payment. WBB Deadline is 5:00pm Tues. for all ads 724-654-5529.

**OCT. 14:** Bingo Every Monday Evening (excluding holidays), early birds 6:30pm, regular bingo 7pm, Wampum American Legion, 436 Beaver St., Wampum

**OCT. 14:** Music Club Chorus "Messiah" rehearsal, 7pm, singers high school-above welcome; First Presby. Church, 125 N. Jefferson St., New Castle; 724-923-8602

**OCT. 17:** Celebrate Recovery, every Thursday 6:30pm-8:30pm, for any life issue; New Life Church, New Wilmington. Questions: Pastor Trent 724-946-2816

**OCT. 19:** Mohawk Fall Arts and Crafts Show, 10am-4pm, High school artwork, food, craft vendors, 50/50, gift basket raffle, DJ. 385 Mohawk School Rd., New Castle <sup>10-18</sup>

**OCT. 19:** Lawrence County ABATE Fall Festival, 9am-7pm, free admission; Crafters, corn hole tournament, pumpkin painting, DJ, Chinese Auction, raffles; food available for purchase; crafters/info. call Terri 724-421-4117; Scott Twp. Firehall, 3712 Harlansburg Rd., New Castle 16101 <sup>10-18</sup>

**OCT. 19:** Fall Family Festival, 3pm-5pm, hay maze, food, bounce house, train ride; Evangel Community Church, 1530 Harlansburg Rd., New Castle

**OCT. 19:** New Life Bread Basket Food Bank, drive/walk through, 9am-10:30am; 346 E. Washington St., New Castle. Questions: Pastor Trent 724-946-2816

**OCT. 20:** Pro-Life Pasta Dinner, 11:30am-5:30pm, adult \$15, under 10 \$10, under 5 free, take-out available, 724-466-2482; St. Mary's Parish Center, 117 N. Beaver St., New Castle <sup>10-18</sup>

**OCT. 20:** Sons of Italy Dinner Dance, Nunzio and Melodies; 4pm-8pm, Cavatelli Dinner, tickets \$15/2 for \$25; 724-654-4807 Kathy <sup>10-18</sup>

**OCT. 24 or 25:** Promise of Life Network Fundraising Banquet, adults RSVP by Oct. 14; promiseoflifenetw.org/banquet

**OCT. 26:** Trunk-or-Treat, 5pm-7pm, Christ Lutheran Church, 1302 E. Washington St., New Castle <sup>10-25</sup>

**NOV. 2:** Volant Volunteer Fire Company All-You-Can-Eat Buckwheat/Regular Pancake and Sausage Day, 7am-4:30pm, donations: adults \$10, children 6-12 \$6, 5-under free, Main St., Volant, handicap accessible; info. 724-533-2673 <sup>11-1</sup>

**NOV. 3:** Fall Behind! Daylight Saving Time ends at 2:00am today. Remember to turn your clocks back 1 hour before you go to bed Saturday night!

**NOV. 8:** Marine Corps Birthday Ball, 6:00pm, dinner, guest speaker, drawings, music, dancing, reservation deadline Oct. 28; 724-510-4226, Sponsor: Marine Corps League

**NOV. 9:** Holiday Craft Show, 9am-2pm, crafts, jewelry, soup and lunch served, stop by and support the deacon ministry; First Presby. Church, 125 N. Jefferson St., New Castle <sup>11-8</sup>

**NOV. 9:** Scott Twp. Volunteer Fire Department presents "Robinhood". Come frolic in the Sherwood Forest, enjoy raffles, prizes, costume contest and a Murder Mystery - Comedy Show. Feast on our Famous Braised Steak Dinner. Doors open at 5pm, Dinner at 6pm, Show at 7pm, tickets \$35 each, or \$264.00 for a complete table of 8, call Kim at 724-658-5966 for tickets; 3712 Harlansburg Rd., New Castle <sup>10-25</sup>

**EXCAVATING**

• Fully Insured • Free Estimates

**LANDSCAPING****LIMESTONE & TOPSOIL**  
Wholesale • Retail • Delivery Available

• Base &amp; Top Limestone

**Beyond Corp., LLC** PA086830

No job too small • 724-730-2296

**PUPPIES, 8 weeks** old, 2 black males, 2 blonde females available, mix breed, free to good homes; 724-498-2617 <sup>10-18</sup>

**2020 CHEVY Malibu** LX, new brakes, tires, tune-up, and calipers, inspected, 1 owner, great cond.; 724-759-8870

**Buying / Wanted Jewelry**

Gold, Silver, Platinum, Costume Jewelry

Call or Text  
**724-923-8230**

**UTILITY TRAILER:** 12" BANDSAW on legs 3,000 lb. gross weight 5 1/2' by 10' better than new \$1,700; 724-651-3271

**12" PORTAPOWER** like new \$125; Parts washer \$100; call 724-698-3591

**SPIELVOGEL CHIMNEY**Sweeping & Repairs  
• Insured**Complete Chimney Care**Sweeping • Repointing • Caps  
Water Proofing • Animal Guards**Tony**

724-841-6400



PA036326

**ANTHRACITE COAL** Brown 3-shelf wooden Stove by Hitzer good cond, \$300; can be seen at 888 Bowden Rd., New Castle <sup>10-18</sup>

Brown 3-shelf wooden bookcase, 36" high 24" wide, 9" deep, good cond. \$25; 724-946-2860 leave message

**Weekly Truckloads**

of overstock merchandise, from your favorite retailers.

Our prices are

**40% to 75% Off Retail!**

Home goods, toys, small appliances, cosmetics, camping equipment, furniture, exercise equipment, outdoor/patio, cell phone accessories, & so much more!

**Areas Best Deals on Snacks, Candy, Cereal & So Much More!**

Open to the public. • No membership fees.  
1399 Countyline Rd., New Castle, PA 16101  
Tues., Wed., Thurs. 4pm-7pm, Sat. 10am-3pm  
www.lawrencecountyliquidationdepot.com

# Discover Great Hearing



Hearing is Important to Your Balance  
Hearing is Important to Your Speech and Conversation  
And "Yes" Hearing Loss is Affiliated With Alzheimers and Dementia

**NEW LOCATION**  
3009 Wilmington Rd., New Castle  
Next to the Crane Room Grille  
724-965-8383

If you are not hearing what you are needing to hear, please then allow my 34 years of programming and fitting hearing aids (of all makes and models) give that back to you. I promise my experience will be worth it for you and most of all... your hearing to be it's very best possible.

## Donna Gallo Robison's HEARING CENTER



DEAR PAW'S CORNER: My German Shepherd, "Dante," is smart but stubborn, and constant training is essential. But I wanted to share a method I use to make sure I keep up with his basic obedience training and work on advanced skills year-round.

Every three to four months, I sit down with a new notebook and make a training journal for Dante. It helps me organize my thoughts around how to best train him in the late fall and winter, when going outside every day isn't always possible, or the weather is so unpleasant

that Dante won't listen to my commands.

I write down the training goals I want to accomplish during this period. I note any behavioral or training issues that Dante has had up to now. Shepherds, like many big dogs and herders, have a lot of energy and need at least an hour per day of exercise, so I figure out the best times to do that. There are also a lot of holidays during this period, and the journal gives me a place to figure out in advance how I will handle travel, training, parties and other schedule challenges.

I hope my method will help other readers who are trying to maintain their dog's obedience skills while having a busy life. - Cheryl K. in Eau Claire, Wisconsin

DEAR Cheryl: That's fantastic advice! Thank you for sharing your journaling method. It sounds like it provides a space to write down much more information than jotting notes on a wall calendar.

Creating a training schedule and journal also is a big help in monitoring how well your dog is progressing with their training, and noting areas where improvements can be made.

©2024 King Features Synd., Inc.

**Gilliland's Market**  
Est. 2014  
**Quality Meats & Groceries**  
Proprietors : Jamie and Dee Anglin

109 S. Market St.,  
New Wilmington • 724 946-3508  
Mon.-Fri. 9-5, Sat. 9-3

Brands you know:  
• O'Neill Coffee  
• Cellone's Bread  
• Marburger Dairy  
• R-N-R's Bakery  
• Pizza Plaza

**SUBS**  
**Fresh & Ready**

**TOYOTA TACOMA** 4 STEEL Ford wheels, 8-bolt, 17"x7.5", \$50 all; transmission jack, only used once, \$125; 724-04010, fits 2005-2015, \$100; 724-752-9415

**POLE BARNs and Garages;** Call Chris Byler 724-202-9747, 216-469-0322 cell, PA146758 10-25

# TIREXPRESS

## TOTAL CAR CARE

[www.TireExpressPA.com](http://www.TireExpressPA.com)

**TIRES • BRAKES • OIL CHANGES • BATTERIES**  
**ENGINE REPAIRS • TUNE UP • STATE INSPECTIONS**  
**ALIGNMENTS • EXHAUST SYSTEMS**

All repairs include 12 Months/12,000 Mile Nationwide Warranty on Workmanship

**When You Need TIRES, BRAKES or an ALIGNMENT Call TIREXPRESS!**  
6 Months No Financing on Any Purchase Over \$149 with Approved Credit

533 Taylor Street  
New Castle, PA  
**724.652.0321**

**KEEP MOVING AHEAD** GOODYEAR

Purchase a Set of 4 Select Tires  
**GET UP TO \$200 BACK**

\*Purchase on your Goodyear Credit Card. Via mail Visa® Prepaid Card. Offer Valid 10.1.24-12.31.24. See store for details

**FREE** **Alignment Check**

**TIREXPRESS**

With purchase of 2 or 4 new tires. No other discounts apply. See store for details 724.652.0321.Exp.12.31.24

Purchase a Set of 4 Select Tires\*  
**BF Goodrich** **GET UP TO \$60 Back**

What are you building for. After online submission on purchases of four new BF Goodrich passenger or light truck tires. Offer valid 10.3.24-10.18.24 \*See store for details

## Got Potholes?

Screened asphalt millings for sale



Call Matt  
724-944-8075



- Groceries
- Bill Payments
- Lottery
- Skill Games
- Check Cashing

## SOUTH SIDE SUPERETTE

440 East Long Ave., New Castle • 724-654-0444

## Amber Waves

DAD, I'M HAVING SOME TROUBLE WITH THIS MATH PROBLEM. CAN YOU HELP?

I REMEMBER GETTING ANSWERS TO A LOT OF MY HOMEWORK FROM MY DAD.

MOM, WHAT'S GRANDPA'S PHONE NUMBER?

©2024 King Features Syndicate, Inc. All rights reserved.

by Dave T. Phipps

Schedule your appointment online at [www.TireExpressPA.com](http://www.TireExpressPA.com)

**\$35**

Conventional Oil Change (5 quart) plus filter

**TIREXPRESS**

No other discounts apply. See store for details 724.652.0321.Exp.12.31.24

**\$45**

Semi Synthetic Oil Change (5 quart) plus filter

**TIREXPRESS**

No other discounts apply. See store for details 724.652.0321.Exp.12.31.24

**\$55**

Full Synthetic Oil Change (5 quart) plus filter

**TIREXPRESS**

No other discounts apply. See store for details 724.652.0321.Exp.12.31.24

**GET ALL 3 - ALIGNMENT, ROTATION & BALANCE**

**Only \$80**

**TIREXPRESS**

Some exclusions apply for certain vehicles. No other discounts apply. See store for details 724.652.0321.Exp.12.31.24

## Sperdute Farm Market

206 Kildoo Rd., Mt. Jackson, just off  
Rtes. 108 & 551 • 724 667-8866 • Daily 9am-6pm

### PUMPKINS



- Mums • Indian Corn
- Cornstalks
- Gourds • Straw

Produce Still Available, Including Peppers & Tomatoes!

We Accept  
FMNP Checks

### Mohawk Tree Service

Stump Grinding,  
most \$100-\$500,  
serving Mercer,  
Lawrence, Trumbull;  
724-699-7737

PA190502

SHARPENING of  
chain saws & mower  
blades, carbide & steel  
circular saws, router  
bits & sharper cutters,  
jointer & planer knives;  
Snyder Saw Service  
724-758-6782



RELAX. IT'S RHEEM®

Rheem  
Professional  
Series

Water Heaters: Installation & Service

## Laszlo Plumbing and Heating

Call Today!

724-758-5610

168 Portersville Rd.  
Ellport, PA  
Free Estimates

PA048990

Wanted: Rims for Yama-  
ha Grizzly 2005 12"; 724-  
674-6493

Wheelchair folding foot  
rests good cond. \$55;  
724-650-7106

## Paula's Dog Grooming

Over 30 years experience

Groom, Bath,  
Nails, Ears

starting at \$40.00 small dog

724-651-5657 • New Castle



Sell Your  
**CAR**  
Fast & Easy  
800-422-8884

FREE EVALUATION  
of your Social Security  
Disability Claim.  
Call Attorney  
Pamela Miller  
724-656-1555  
No Recovery - No Fee

## Ray's TIRE Shop

41 Portersville Rd., Ellwood City

814-860-0194

Mon.-Sat. 9am-5pm; Sun. closed

Mounting, Balancing,  
and Tire Disposal available



# PROPER RECYCLING UNDERSTANDING CONSUMPTION

A Guide to doing it right in Lawrence and Mercer Counties

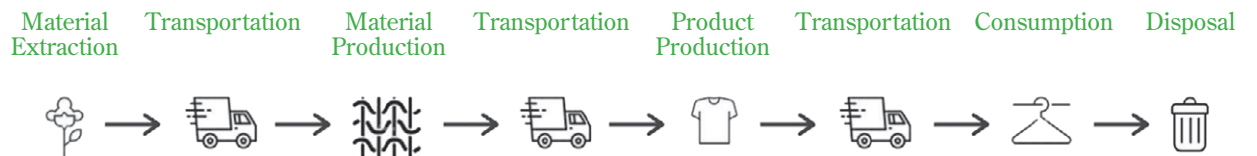
## What is Consumption?

Consumption is the purchase and use of goods and services. Most of the goods we purchase will ultimately end up as waste when their useful life is over. This waste must be disposed of properly, through reuse, recycling, or landfilling, to protect our health, economy, and environment.

On average, every person generates approximately 1,600 pounds of trash annually.

The diagram below from the Green Business Bureau (<https://greenbusinessbureau.com/>) illustrates the traditional product life cycle of a basic T-shirt. Notice that this is a very linear path that results in disposal via landfilling or municipal waste incineration.

## Typical Product Life Cycle



Each step of this process uses a great deal of energy and resources and applies to every product we buy. Some processes, such as mining are very energy-intensive as the materials need extracted (mined), processed, and transported - all before they can even be manufactured into a product. This does not include the environmental damage associated with mining or the potential health impacts from the improper disposal of the more hazardous items such as televisions and household chemicals.

## What are some Negative Aspects of Consumption with regard to the Environment and our Health?

The consumption equation does have negative impacts. This includes air, water, soil, and thermal pollution, climate change, deforestation, habitat destruction, and wasted energy and materials. There are many health issues that

are directly caused by the pollution and impacts.

Consumption is expensive. By being an informed consumer, you can spend your money wisely on the goods and services you purchase.

## What is the solution?

One of the most important things we can do is to encourage manufacturers to strive for a sustainable product life cycle instead of the wasteful linear model. Practicing waste reduction, reuse, and recycling will have positive impacts on our environment, health, and economy. It is also important to design products with repair and recycling in mind. Not only do these practices reduce our need for virgin materials but they also save significant amounts of energy. This can save us on the products and services we use.

<https://lawrencecountypa.gov/departments/recycling-and-solid-waste>

[www.mercercountypa.gov/recycling](http://www.mercercountypa.gov/recycling)

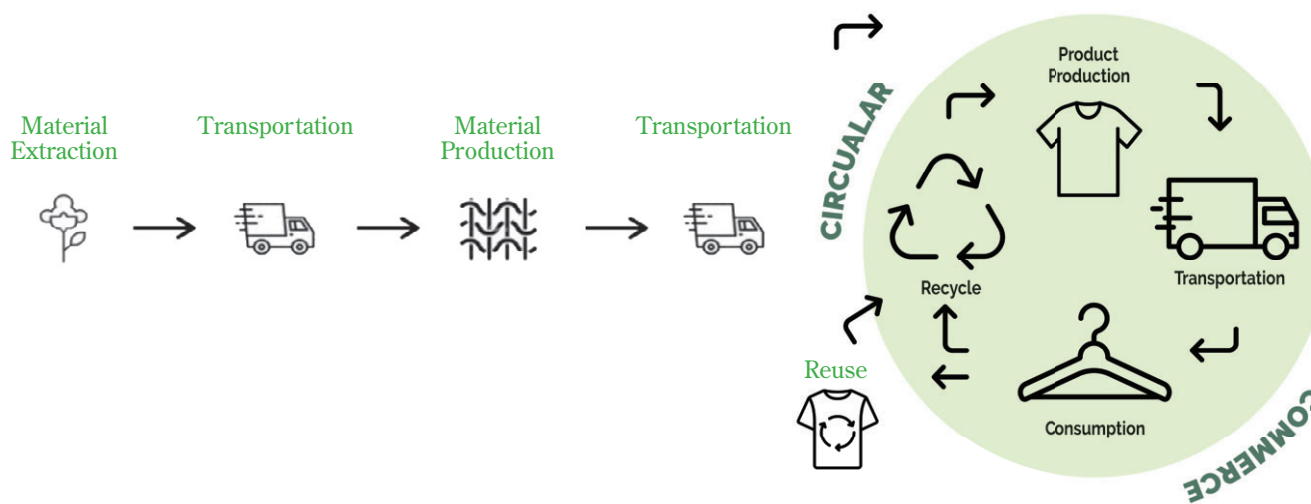


Recycling/Solid Waste Department  
(724) 658-6925



Like us on  
Facebook

## Sustainable Product Life Cycle



This sustainable product life cycle is circular and avoids the farming or extraction of raw materials. Using recycled materials for manufacturing saves energy and conserves natural resources. It also requires that a product be manufactured with recyclability in mind. Sustainability requires a circular mindset, where nothing is lost and nothing is wasted.

### What can we do?

We can start by practicing the three “Rs” - reduce, reuse, and recycle. Reducing our waste is the most important of the three “Rs.” By reducing the amount of waste we generate in the first place, we have less to reuse, recycle, and most importantly, throw away. Some easy things to do include avoiding items with excess packaging, choosing reusable items such as a ceramic coffee mug over a paper or foam cup, buying locally grown food, growing your own garden, and being an informed consumer. Avoid single use plastics. Borrow, rent, or share infrequently used items such as tools and equipment.

Reuse is using an item over again, whether for its original purpose or an entirely different function. It is the second most important “R” and is pretty straightforward. Yard sales, flea markets, donation centers, repairing items, and repurposing an item such as a tire into a swing or planter are all examples of reuse. Reuse is a great way to use products to their fullest extent which saves money and resources.

Recycling is the processing of an item that would otherwise be thrown away as trash into a new product. Recycling saves significant amounts of energy and natural resources, and is one of the easiest ways to help address climate change. The avoided cost associated with energy usage and resource mining and processing results in money saved on the products and services that we purchase.

In a world of abundance, we are called to be increasingly thoughtful about the products we purchase. If something is worth owning, it is worth buying something of quality that will serve its purpose for a long time. Be sure to check out our other fact sheets for more and detailed information about the three “Rs”.

<https://lawrencecountypa.gov/departments/recycling-and-solid-waste>

[www.mercercountypa.gov/recycling](http://www.mercercountypa.gov/recycling)

This ad is funded in part through a grant from the PA Department of Environmental Protection.



Recycling/Solid Waste Department  
(724) 658-6925



## Haswell Excavating

- Land Clearing
- Retaining Walls
- Septic Systems
- French Drains
- Sewer Tie-In & Repair

- Driveways
- Basements
- Footers
- Water Lines
- Regrading
- Hauling

**All Other Excavating Needs**

**724-714-8723**  
• PA162732 •

**BRAND NEW 2024 3** bedroom, 2 bath, Commodore double wide in Gas Light Village Mobile Home Park, \$89,900, easy financing - low down payment 724-658-1000 or 724-730-8755 <sup>10-25</sup>

## FIREWOOD

for Sale:  
Seasoned/Split,  
\$275/cord,  
4'x4'x8', delivered;  
702-493-6498

**Metal & Shingle Roofs, All Gutter Services Walk-In Shower, Vanity, Flooring, Kitchen, Siding, Soffit, Fascia, Electric & Plumbing, Decks and Repairs, Garages, Insulation: Attic, Wall, Ceiling**

**Home Zone, Inc.** Any and All Remodeling Senior & Military Discount  
**724-944-7779**  
PA079817 • BBB

**NOTICE: There is no mail delivery on Monday, October 14, Columbus Day.** The Bulletin deadline for ALL ADS will be 5:00pm Tuesday

## Figurelli Lawn Care, LLC

*Residential & Commercial*

### Leaf Removal Snowplowing/De-Icing

- Lawn Service • Landscaping
- Shrub/Hedge Trimming
- Minor Excavating



Fully Insured • PA114956 • Voted Best of the Best 2023  
Call for an Estimate Today! **724-714-4436**

## SCOTTISH COLLIE

Puppies, tri female, sable male, 3 tri males, white ruffs, 4 months, vet checked, shots, wormed, \$800 with papers, \$400 without; 724-421-5088

## A.G. Foundations, LLC

Cemetery  
Headstone Cleaning  
Call Adam - Owner  
724-651-2097



## Little Chris' Heating & AC LLC

"We help your air...  
Because we care!"

Licensed and insured professionals with 8+ years experience

Ask About our **\$80 Heating tune-ups** w/ad.

Call today for all your HVAC needs repairs - installs - and much more!

**724-614-3847** PAHIC185433



**RHINO LININGS**  
**Spray In Bed Liners**  
**\$50 OFF**

With This Ad Offer Through Oct. 30, 2024

**Your New Car Alternative**  
 Rte. 18, New Castle  
 724 654-7741  
 gocrivelli.com

**G.O. CRIVELLI AUTOMOTIVE**  
 CERTIFIED PRE-OWNED

• With holidays on the way, money is getting tight in my household. This is a fun, creative way to save a bit of cash: Plan a no-spend weekend every month, where you don't spend any money on your activities. Challenge your children to help you plan it or take turns finding activities.

**Kelly's Glass Block Windows**



Custom Built and Installed  
 Quality Work - Reasonable Price  
 Add Security to Your Home

- Break Resistant •
- Saves Energy •
- Low Maintenance •

PA008459  
 120 Frank Way, New Castle 724-654-9491

# PUMPKINS

**Pick Your Own Starting at \$1.00 ea.**

888 Bowden Rd., New Castle, PA 16105  
 in Hickory Township  
 Friday & Saturday - Sunup to Sundown

**Now Here's A Tip**  
 by JoAnn Derson

• Remove mildew from plastic shower curtains by spraying them with a mix of bleach and water, or just toss them in the washing machine with your next load of towels.

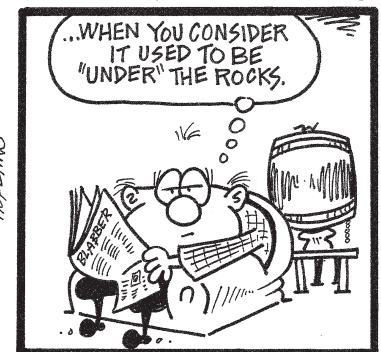
©2024 King Features Synd., Inc.

**BRAND NEW 3 bedroom, 2 bath Commodore** manufactured home in Harbor Village Mobile Home Park, \$79,900, easy financing - low down payment; 724-658-1000 or 724-730-8755

**The Spats**



©2024 King Features Syndicate, Inc. All rights reserved.



**DECKS INSTALLED!**  
 Call Chris Byler, 724-202-9747, cell phone 216-469-0322, PA146758 10-25

## Retired Teacher PAINTS

Interior/Exterior, Condos, Decks, New Construction, 30+ years exp., neat, reasonable, dependable;  
**724-714-7872**  
 Frank PA087536

• Fill your salt and pepper shakers a fourth of the way with uncooked white rice. Dry rice will allow the salt or pepper to flow more freely from the shaker. If your shaker is opaque, you can tell when it's time to add more salt or pepper when the shaker starts to rattle.

• Mark old toothbrushes with masking tape so you can tell the difference between cleaning brushes and those you use for your teeth. You can clean a toothbrush in the dishwasher. Put it with the silverware.

## 422 Landscape Supply, LLC and Hauling



- Topsoil • Limestone
- Gravel • Fill Dirt
- Slag • Sand • Mulch
- Landscape Stone
- Polywood Furniture
- Metal Carports
- Garages
- Pickup & Delivery

### Old Hickory SHEDS

• all sizes • rent to own or purchase

3298 US Rte. 422, New Castle, across from old Kalajainen Boat Sales  
 Mon.-Fri. 8am-4:30pm, Sat. 8am-3pm

**724-924-2400 • 724-658-4829** Member BBB

## Americanisms



"In October, a maple tree before your window lights up your room like a great lamp."

— John Burroughs

© 2024 King Features Syndicate, Inc.

# Fagan Services, LLC

Now Offers Service to

**Remove or Trim**  
 that **Big Tree** in your **Backyard!**

We now have a

**92 ft. self-propelled ArborPro Lift**

that will go through your 36" gate for easy service.

- Tree Trimming
- Tree Removal
- Stump Grinding
- Free Estimates
- 24 Hour Emergency Services

**724-971-2198**

faganservicesllc.jerry@yahoo.com

Fully insured and legally registered contractors with Worker's Comp.  
 PA050411



# Weekly Bargain Bulletin

1576 Sunrise Dr.  
New Castle, PA 16105

**Business Office/Display Ads: 724-654-5529**  
Website: [www.WeeklyBargainBulletin.com](http://www.WeeklyBargainBulletin.com)  
**Call In Office Hours:** Mon. & Tues. 10am-5pm.  
**Walk-In Office Hours:** Mon. 12noon-5pm; Tues. 10am-5pm  
*Hour Changes/Early Deadlines likely around holidays*  
**Ad Drop Boxes:** Pet Parlor, Nesh., Shipping Depot, New Castle  
*Covering Lawrence, parts of Butler, Beaver and Mercer Counties in Western Pennsylvania every Friday...since 1972!*

## 2024 LINE AD ADVERTISING DIRECTIONS

**Mail in ad or Call in paid ad.** For our records, all ads MUST include your name, address and phone number for ad to be printed. Ads received without this information will not be printed. Use ad blank below.

**Tuesday Deadlines:** WBB Office 5:00pm; **Ad Drop Box:** Shipping Depot 3:30pm, Pet Parlor 4:00pm  
•Phone Number/Price = 1 word each **Prepaid Ads Only:** •Website/Email = 4+ words each

**PAYMENT:** Cash - any amount, **check/money order - \$10.00 or more**, under \$10 will NOT be accepted. (\*12 will place your \$6 ad for 2 editions); Visa, MasterCard, Discover, debit cards - min. charge \$6.00. All over-the-phone ads taken only with debit/credit card payment.

### YARD / GARAGE SALES (YS) Line Ads - Mail in or call office 724-654-5529

•1-20 words: \$6.00/edition Prepaid, Over 20 words: additional 25¢ per word per edition  
•Ad info. **MUST** include mailing address, date(s) and time(s) of sale

### \$6.00 PREPAID LINE ADS - Mail in or call office 724-654-5529

•1-20 words: \$6.00/edition Prepaid, Over 20 words: additional 25¢ per word. Selling item valued over \$200, or selling multiple items, prices listed optional. Ad will be edited if payment is not correct.  
•Including: Hiring, Rental, All Service Work (PA HIC#), Business, Home Business, Shoots, Firewood, Notices, Produce/Plants, Animals, Ongoing sales, Wanting multiple or general items for personal collection, Selling multiples of same item, Barter/trade over \$200 value, etc. **\*Wanting/Selling:** Firearms/ammo/supplies, Parts, Tires, Vehicles/Motorcycles/4-Wheelers/anything with an engine  
•**Community Happenings: All events requiring money (any selling/admission charge)** Including nonprofit/church fundraiser, dinner, craft fair, etc., must include date, time, location

### \$200 OR LESS LINE AD / FREE EVENT Must Be Mailed In With This Form.

20 words or less • Selling **ONE** household item, per household, per edition, price listed at \$200 or less/Give away one item free of charge\*/Want one specific item\*/Free of charge event - no admission charge, no selling. Additional ads/items will not be printed unless prepaid. Longer ads will be edited. Ad prints as space permits. Paid ads are printed in full.

**REFUND POLICY:** WBB Advertising In-House Credit (*valid on future ads*) is issued, in full, for line ads and display ads only when cancelled before our deadline. Cash, check, debit/credit card refunds are subject to a \$2.00 Service Fee. (Notice: If you send a check for \$10.00 for a 20 word \$6.00 ad, your ad will run for 1 edition, **no credit given.**)

The Weekly Bargain Bulletin, Inc. reserves the right to review all material submitted for publication, and to reject any material, in whole or part, which the Weekly Bargain Bulletin, Inc., in its sole opinion, deems inappropriate for publication. We assume no financial responsibility for any typographical errors in any advertisement, but will reprint that portion of an ad in which an error occurs.



**WBB Mail-In Ad Blank** Clearly Print your ad, **One Word Per Space**, the last word is the phone number (not listed in YS). (Include your name/address for our records) Choose ad classification (See directions above) \$200 or less/Free event: **ONE** household item, per household, per edition, 1-20 words. Paid ad/Paid event: include number of editions to print ad (**\$6.00 min. for 1 edition, 20 words**). Mail completed ad blank, with payment when applicable, to: Weekly Bargain Bulletin, 1576 Sunrise Dr., New Castle, PA 16105 (**NO checks or money orders accepted in amounts under \$10.00**)

1 _____	2 _____	3 _____	4 _____
5 _____	6 _____	7 _____	8 _____
9 _____	10 _____	11 _____	12 _____
13 _____	14 _____	15 _____	16 _____
17 _____	18 _____	19 _____	20 _____

(End of \$200 or less item, \$6.00 Ad, Event, Yard Sale) Additional +25¢/word - prepaid ads only.

_____ +25¢	_____ +25¢	_____ +25¢	_____ +25¢
_____ +25¢	_____ +25¢	_____ +25¢	_____ +25¢

Name \_\_\_\_\_  
Address \_\_\_\_\_  
State/Zip \_\_\_\_\_ Contact Phone# \_\_\_\_\_

\_\_\_\_\_ \$200 or less \_\_\_\_\_ \$6.00 Ad \_\_\_\_\_ YS \_\_\_\_\_ CH \_\_\_\_\_ Rental \_\_\_\_\_ Hiring \_\_\_\_\_ # weeks \$ \_\_\_\_\_

## Vendors Wanted

**CRAFTERS/VENDORS** wanted: Holiday show at First Presbyterian Church, New Castle, Sat, Nov. 9, 9am-2pm, tables \$20; call Adele 724-510-4181 <sup>10-11</sup>


**VENDORS WANTED:** Holy Spirit Parish Center Christmas Festival, Nov. 23, 9am-3pm, North Beaver St., New Castle. For application email [jamielylerfoce@gmail.com](mailto:jamielylerfoce@gmail.com) <sup>10-25</sup>

## Reunion

**NOV. 9:** New Castle Commodores 1964 Reunion, Gallo's, \$30/person, mail Lorraine Mutsatsos Reider, 1121 Hemlock St., New Castle, 16101 by 11/1/24 <sup>11-1</sup>

**Post a Reunion:** 20 words, \$6.00, over 20 words, add 25¢ per word; call 724-654-5529 Mon.-Tues. 10-5. Deadline: 5pm Tues.

## STAY AND PLAY INDOOR DOG PARK, LLC

**Now Open** and accepting members 

### Featuring Grandpaws Pet Salon

What can we do for you?

- Specialty Retail Shop
- Unique Birthday Party Location
- Self Wash Dog Tubs

Stop and Take a Tour

**Shenango Commons**  
(formerly Lawrence Village Plaza) Rte. 65, New Castle • 878-232-1980  
[stayandplayindoordogpark.com](http://stayandplayindoordogpark.com)

## JUST JUNK IT!

Removal of all waste & rubbish, free estimates, no need for expensive roll-offs!  
**724-730-2668**

DONATE YOUR car, truck, boat, RV and more to support our veterans! Schedule a FAST, FREE vehicle pickup and receive a top tax deduction! Call Veteran Car Donations at 1-877-327-0686 today!

## HENLEY'S TRUCK ACCESSORY STORE



### Hard & Soft Tonneau Covers

• Roll-up • Fold-up • One Piece

**724-652-1763**

## Hahn's Sales and Service

### Chainsaws



Sales-Parts-Service  
Chain Sharpening

211 Sankey Run Rd., Edinburg • 724-652-5164

DIRECTV OVER INTERNET - Get your favorite live TV, sports and local channels. 99% signal reliability! CHOICE Package, \$84.99/mo for 12 months. HBO Max and Premium Channels included for 3 mos (w/CHOICE Package or higher.) No annual contract, no hidden fees! Some restrictions apply. Call IVS 1-866-629-6086

## The FORGE of CREATION Vertical Gardening Made Easy



By Dream Invent Inspire, Inc.

3', 5', or 10' tall 360° plant carousels, tiered quick connect buckets, and revolutionary software that automates water, light, airflow and nutrient schedules.

### The Future of Growing is Here!

Visit Our Website  
**TheForgeOfCreation.com**  
and See How You Can Unlock Your 4-Season Growing Potential!



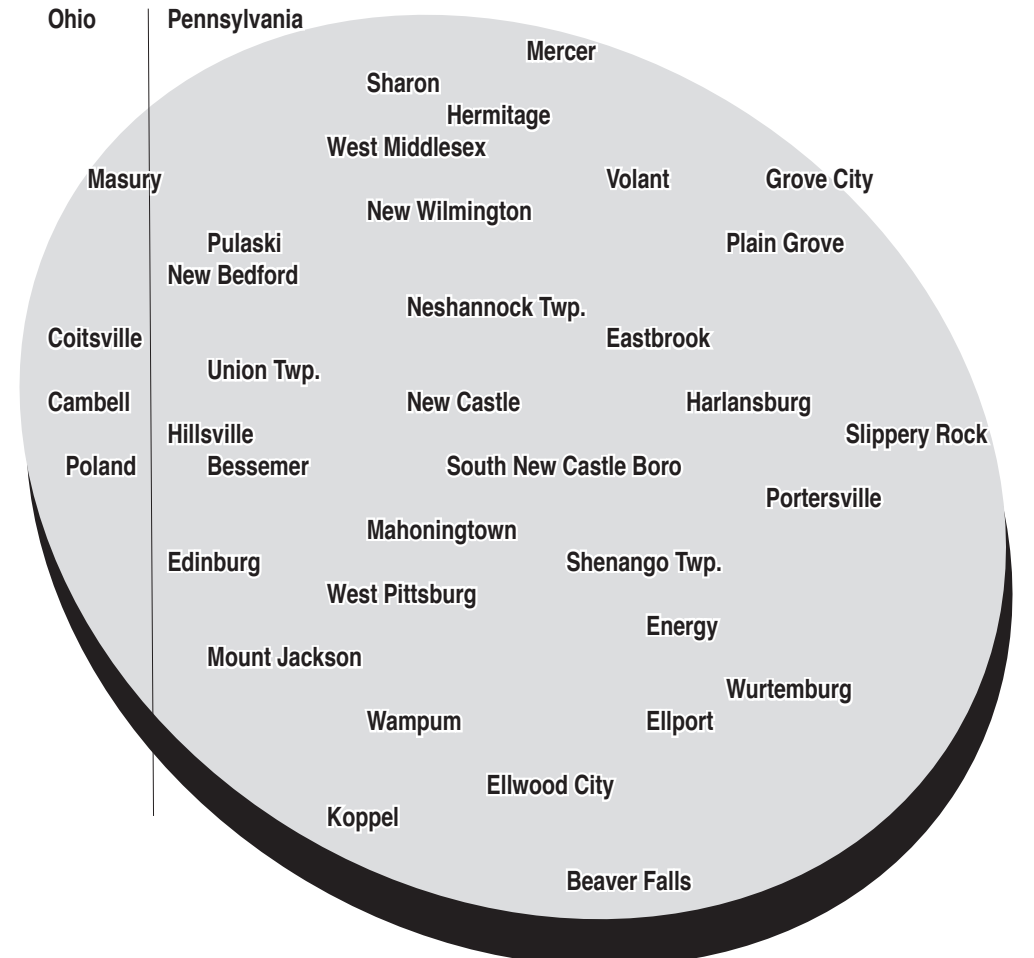
# Super Crossword

"TENETS, ANYONE?"

- ACROSS**
- 1 Fitting name for a herding dog
  - 5 Tense, with "up"
  - 10 "This Is 40" director Judd
  - 16 That guy
  - 19 "... I could — horse!"
  - 20 Actress Christensen
  - 21 Mexican state
  - 22 — -Z (totally)
  - 23 Start of a riddle
  - 26 Cushion
  - 27 Composer Antonio featured in "Amadeus"
  - 28 Severe
  - 29 Sap source
  - 31 Actors Ken and Lena
  - 33 Sparkly decoration
  - 37 "By the way" comments
  - 38 Riddle, part 2
  - 43 Ending for pent- or prop-
  - 44 City in central Sicily
  - 45 Brand of cough drops
  - 46 Like Diet Coke
  - 51 Holy Mlle.
  - 53 Togetherness
  - 56 Riddle, part 3
  - 60 Samms and Stone of film
  - 61 Luau cocktail
  - 62 Lipton drinks
  - 63 High peak
  - 66 Patriotic org. since 1889
  - 67 Symbols
  - 68 Scholastic meas.
  - 71 Seeded loaf
  - 72 Vault
  - 74 "Invisible" singer
  - 76 Press into folds
  - 78 Riddle, part 4
  - 84 Eritrean capital
  - 85 Spanish bear
  - 86 Videotapes, e.g.
  - 88 Hi-fi setup
  - 90 King of Egypt in the 1950s
  - 92 Trellis-climbing plant
  - 93 End of the riddle
  - 101 Successor of Claudius I
  - 102 Tijuana wives
  - 103 Poet Sachs
  - 104 Throw forcefully
  - 106 Subway entry gate
  - 108 Like most sandals
  - 112 Tiny charged thing
  - 113 Riddle's answer
  - 118 Tabloid paper
  - 119 Singer
  - 120 French capital, in a Cole Porter title
  - 121 Word that's pluralizable
  - 122 "Zine staffers
  - 123 Ferret out
  - 124 African antelope
  - 125 Onetime JFK jets
  - DOWN**
  - 1 Plies needle and thread
  - 2 "Very funny"
  - 3 List-ending abbr.
  - 4 Terraces
  - 5 The "K" of K-Cup
  - 6 White weasel
  - 7 Sharp bark
  - 8 Barely earns, with "out"
  - 9 Tranquilizer shooter
  - 10 Pippi Long-stocking creator Lindgren
  - 11 Travel destination, generically
  - 12 Very old: Abbr.
  - 13 "TiK —" (Kesha hit)
  - 14 Raw rock
  - 15 Very friendly
  - 16 Greeting on a Sunday holiday
  - 17 Slanting type
  - 18 Demure
  - 24 Composer Bartók
  - 25 — bill of goods (dupe)
  - 30 Cause pain to
  - 32 Plies a broom
  - 34 Missionary "Mother"
  - 35 Prefix with dermis
  - 36 Be cyclical
  - 38 Pas' partners
  - 39 Ample, to Lil' Abner
  - 40 Utah's lily
  - 41 Law school newbie
  - 42 Rice-A- —
  - 47 Is, pluralized
  - 48 Tach readings, informally
  - 49 U.S. disaster aid org.
  - 50 Threaten like a tiger
  - 51 Result of a hit to the eye
  - 52 Wee kids
  - 54 Skin cream brand
  - 55 NASDAQ kin
  - 57 Estevez of the Brat Pack
  - 58 Place a bet
  - 59 River in Iraq August, often
  - 63 — Romeo (sporty auto)
  - 64 Those born in August, often
  - 65 Resort city near Los Angeles
  - 67 "— a Lady" (1971 hit)
  - 69 They oink "Mother", in Lyon
  - 73 Combat unit
  - 75 Easy winner
  - 76 Wearing, as clothes
  - 77 Stew holder
  - 79 Hershiser of baseball
  - 80 "— hell" (Sherman assertion)
  - 81 Tesla vehicle, e.g.
  - 82 Elec. or gas
  - 83 Golfer Ballesteros
  - 87 Part of DOS: Abbr.
  - 89 Summer, in Savoy
  - 90 Swing wildly, as arms
  - 91 Rising ground
  - 93 In flames
  - 94 Put more film in
  - 95 Of the universe
  - 96 Former NBA star Metta Sandiford- —
  - 97 Male tennis players
  - 98 Was too syrupy
  - 99 "— 3 Lives"
  - 100 Auto-racing posts
  - 105 Tickled pink
  - 107 Appraisal, for short
  - 109 "I" problems
  - 110 Indecent stuff
  - 111 — serif font
  - 114 Seville cheer
  - 115 Very big tub
  - 116 Chicago-to-Toronto dir.
  - 117 Noted period

1	2	3	4	5	6	7	8	9	10	11	12	13	14	15	16	17	18			
19				20					21							22				
23			24					25								26				
27						28								29	30					
			31			32		33				34	35	36		37				
38	39	40					41							42						
43							44						45							
46			47	48	49	50				51	52			53			54	55		
	56								57	58				59						
			60						61							62				
63	64	65		66				67				68	69	70		71				
72			73			74	75					76				77				
78				79	80							81				82	83			
84							85					86						87		
			88				89			90	91							92		
93	94								95	96				97	98	99	100			
101						102								103						
104				105					106				107		108			109	110	111
112							113	114	115	116				117						
118															120					121
122																				125

# Look for your copy in these communities each week.



We can help your business with **Social Media management.** Go to [WBBlive.com](http://WBBlive.com)



**PLUS!** You can read the paper **Online** each week at [WeeklyBargainBulletin.com](http://WeeklyBargainBulletin.com)



**REED'S SERVICES**  
 Curbside Service and Delivery Available



1312 Woodside Ave.  
 Ellwood City, PA  
 724-752-1570



*We have Everything for your Fall Decorating at Reasonable Prices!*  
**Pumpkins • Cornstalks • Straw Bales**

5	8	6	7	1	9	4	2	3
9	2	1	6	4	3	7	8	5
4	7	3	2	5	8	1	9	6
2	1	8	3	6	4	9	5	7
3	5	7	1	9	2	6	4	8
6	9	4	5	8	7	3	1	2
8	6	5	9	3	1	2	7	4
7	3	9	4	2	5	8	6	1
1	4	2	8	7	6	5	3	9

**CAR WASH - October 19**  
 Benefits the Sovereign Community Outreach - Helping underprivileged Children

**DuBois**  

**Electric Storage Battery Company**  
 2914 Wilmington Rd., New Castle • 724 674-2604  
 Mon.-Fri. 8-5, Sat. 8-Noon • [www.DuboisBattery.com](http://www.DuboisBattery.com)

- Watch Batteries
- Phone Batteries
- Key Fob Batteries

**We Have BATTERIES** We also have batteries for Mobility Scooters, and Smoke Alarms

S	H	E	P	K	E	Y	E	D	A	P	A	T	O	W	H	I	M						
E	A	T	A	E	R	I	K	A	S	O	N	O	R	A	A	T	O						
W	H	A	T	B	U	M	P	E	R	S	T	I	C	K	E	R	P	A	D				
S	A	L	I	E	R	I	S	T	E	R	N	M	A	P	L	E							
				O	L	I	N	S	G	L	I	T	T	E	R	F	Y	I	S				
M	E	S	S	A	G	E	W	O	U	L	D	B	E	P	E	R	F	E	C	T			
A	N	E						E	N	N	A	R	I	C	O	L	A						
S	U	G	A	R	F	R	E	E				S	T	E		U	N	I	S	O	N		
F	O	R	P	E	O	P	L	E	W	H	O	S	T	R	I	C	T	L	I	C	T	L	Y
				E	M	M	A	S	M	A	I	T	A	I	T	E	A	S					
A	L	P	S	A	R	S	I	G	N	S	G	P	A	R	Y	E							
L	E	A	P	A	S	H	L	E	E	C	R	I	M	P									
F	O	L	L	O	W	T	H	E	I	R	R	E	L	I	G	I	O	U	S				
A	S	M	A	R	A	O	S	O	C	A	S	S	E	T	T	E	S						
				S	T	E	R	E	O	F	U	A	D	I	V	I	Y						
O	R	P	O	L	I	T	I	C	A	L	P	R	I	N	C	I	P	L	E	S			
N	E	R	O	S	E	N	O	R	A	S	N	E	L	L	Y								
F	L	I	N	G				S	T	I	L	E	T	O	E	L	E	S					
I	O	N	L	O	V	E	M	E	L	O	V	E	M	Y	D	O	G	M	A				
R	A	G	A	L	A	N	I	S	P	A	R	E	E	N	O	U	N	A					
E	D	S	D	E	T	E	C	T	E	L	A	N	D	S	S	T	S						

**Mangina Construction** PA022773

- Garages
- Block Work
- Vinyl Siding
- Concrete Work
- Carpentry and Additions
- Basements & Foundations



Senior Discount - Free Estimates - Fully Insured

**724-336-4472 724-652-3051**

“There is no pleasure in having nothing to do; the fun is having lots to do and not doing it.” Andrew Jackson, 7th President of the U.S.A.

**SENIOR NEWS LINE**  
 by Matilda Charles  
**Massive data breach**

The word going around is that hackers have stolen 2.9 billion Social Security numbers, which means everyone. And now it appears all that information, including other personal information, has been released on the internet. That batch of data can include not only Social Security numbers, but names, phone numbers, current and former addresses, lists of relatives and more.

It's time to get very, very serious about protecting our personal data, our identity, our banking information and everything else. Although the horse is out of the barn when it comes to that information being released, there are still steps we can take to try to protect ourselves.

Don't carry your Social Security card in your wallet. Leave it at home, perhaps in an envelope inside a cabinet where you can access it easily.

Change your passwords. Use not only letters but numbers and symbols in your new passwords.

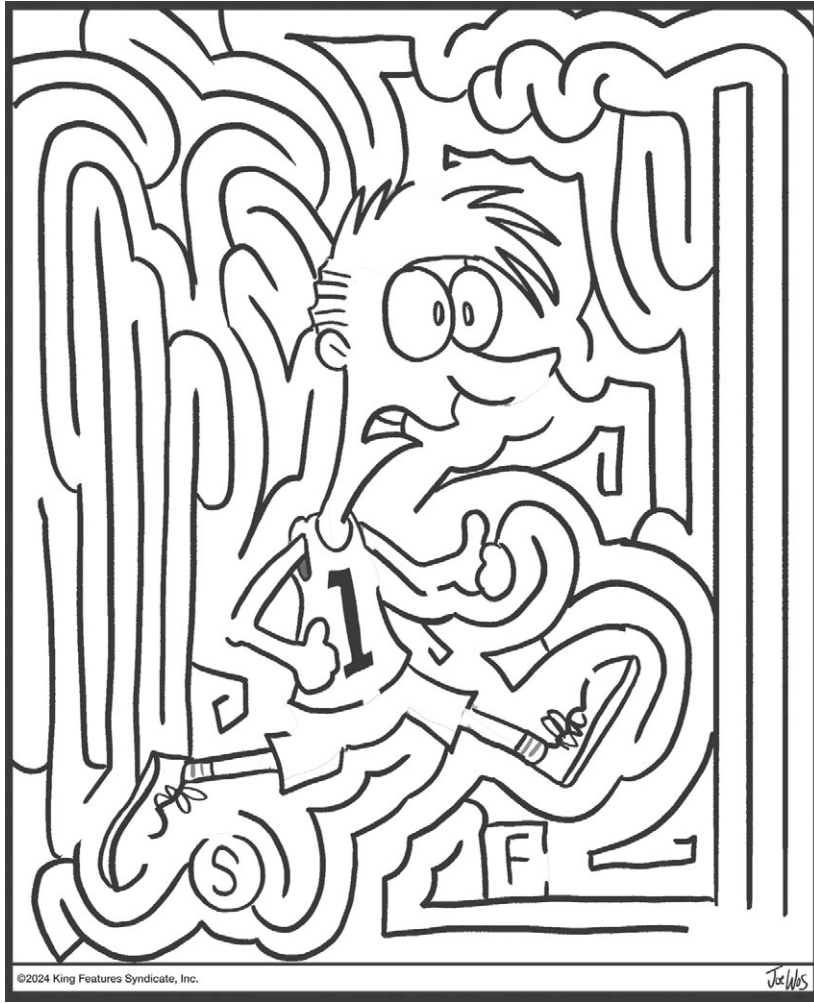
When you get a Medicare statement about any medical treatment you've had, go over it carefully to be certain there's nothing listed that you didn't get.

Be more cautious than ever about answering the phone. It's possible for thieves to fake the number they're calling from, and they can appear to be from your bank or another company you know. Never answer any questions about your personal information.

Be suspicious about any email you receive that asks for personal information. Don't click any links and just delete the email.

Send for your credit reports (or get them online) to check all your information. Put a freeze on all three credit bureaus at the same time. Those are TransUnion, Equifax and Experian. With a freeze, no one will be able to open a new account in your name because no one can check your credit. If necessary, you can do a temporary freeze lift if you're applying for credit somewhere. All three credit bureaus have this option available by phone.

Of all the data breaches we've had, this is the worst. © 2024 King Features Synd., Inc.



**Save \$\$\$! Save Time!**  
 ... Men and Women ...

Learn to **DRIVE BIG TRUCKS!**  
 Have your company or municipality call us. We can get you on the path to a new position making **MORE \$\$\$** within your current employment!



- Come to school on your own schedule!
- Drive Locally!
- Be Driving in 3 Weeks!

• Only Pay for the Training Hours You Need!

**www.MooreCDL.com**

**Moore CDL Driving Academy**  
 New Wilmington  
**724-946-2153 Contract Trainers**  
 ... We're Hiring CDL Driving Instructors ...

**Hermitage Agway**  
 Your Lawn, Garden and Pet Place

**FALL Decorations** 

Corn Stalks, Indian Corn, Mini Pumpkins, Stacker Pumpkins, Mums, Straw Bales & Mini Straw, Yellow, Orange & White Pumpkins, Gourds, and Fall Flags

4065 E. State St., Hermitage, PA  
 724 347-3031

**DutchCraft Const. LLC**  
[www.DutchCraftConstruction.com](http://www.DutchCraftConstruction.com)  
 PA146758 - Former Amish Builders - OH4245-41  
 Chris Byler - Owner / Sales

**Pole Barns • Garages • Windows  
 Decks • Metal Roofing • Vinyl Siding**  
 724-202-9747 or 216-469-0322 cell

**Storage Barns**  
 Visit: [www.ClassicStorageBarnsLLC.com](http://www.ClassicStorageBarnsLLC.com)

**If you think  
you can't get a loan**

**We Can Help!**

**Mahoning Finance**

Independently Owned and Operated  
Established 1925

2418 Wilmington Rd., New Castle 724 658-8888

## BIBLE WORD SEARCH

by Elie's Spiritual Treasures

Psalm 34:11-13

**Come**, my **children**, **listen** to me; I **will teach** you the **fear of the LORD**. Whoever of you **loves life** and **desires to see many good days**, keep your **tongue** from **evil** and **your lips from telling lies**.

NEW INTERNATIONAL VERSION

Y	F	E	A	R	E	S	K	T	L
D	O	O	G	P	E	E	K	E	L
G	N	U	S	F	L	R	L	A	I
T	N	E	R	D	L	I	H	C	W
R	E	O	T	C	P	S	E	H	L
S	M	L	O	S	L	E	U	S	O
Y	E	M	L	O	I	D	G	Y	R
A	E	E	V	I	L	L	N	N	D
D	H	E	D	K	N	A	O	A	N
T	S	E	F	I	L	G	T	M	A

Find the **bolded/underlined** words in the diagram.  
They run in all directions — forward, backward, up,  
down and diagonally.

WWW.SEARCHING-FOR-JESUS.COM

© 2024 King Features Synd., Inc.

**CROSSWELL CAN-  
VAS:** Need a boat cover?  
Custom tarps for all your  
canvas needs, 25 years ex-  
perience; call Jerry 724-  
475-3779 <sup>12-20</sup>

**JAYCO GREYHAWK**  
29MV Ford, gas, 2016,  
mileage 10,009 mi.  
sleeps 8, self levelling, 3  
awnings front bedroom  
dining, 2 pullouts, ex-  
tremely clean, like new;  
\$55,000; 616-550-8330 <sup>10-18</sup>

**CADE  
PAVING**  
w.r. PA006516  
724-652-6144  
Locally Owned  
and Operated  
Since 1993

- Asphalt Millings
- Excavation • Demolition

*Schedule for Spring: Sealcoating,  
Asphalt Paving, Tar & Chip*

Senior and Military Free Estimates  
Discounts Fully Insured

## A-1 Rudy Lock & Safe

Locally Owned and Operated

724-772-RUDY (7839)



### GUN SAFES

- Installation • Re-Keying
- Lock-Outs • Safes

24 Hour Emergency Service

## Strange But True by Lucie Winborne

- One of the world's largest stockpiles of nuclear weapons is located at a U.S. Navy base near Seattle, which is partially defended by trained dolphins.
- Some traditions hold that walking backward while wearing your clothes inside out will allow you to see a witch on Halloween. ©2024 King Features Synd., Inc.

## Ananias Hershberger

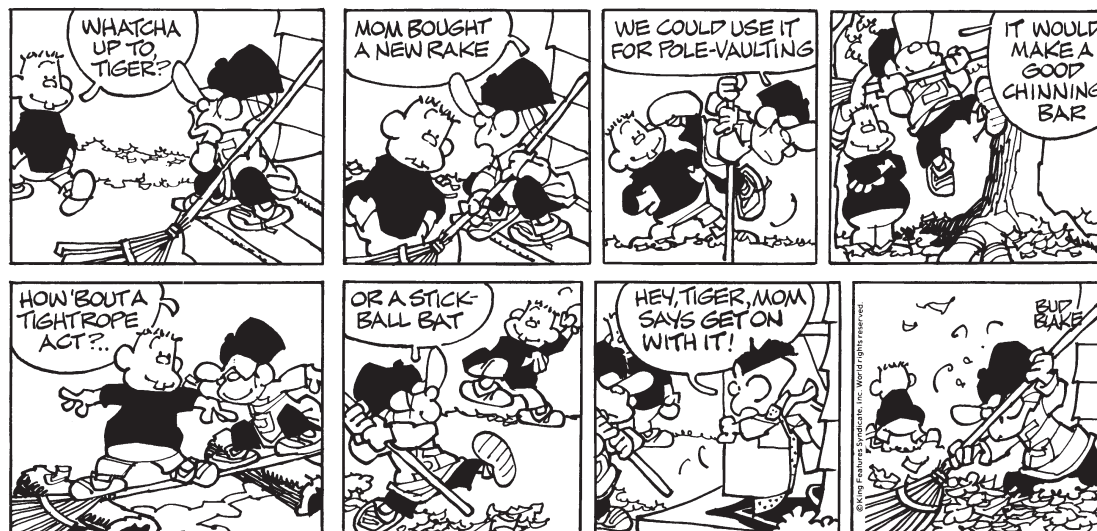
ROOFING • GARAGES  
POLE BUILDINGS

- METAL & SHINGLE ROOFING  
Roof Painting & Repairs
- EXTERIOR & INTERIOR PAINTING

814-795-9197

PA#144328

## TIGER



## TURKEY RUN LANDSCAPING

### Lawn Care and Landscape Installations

- Tree Cleanup
- Chipper Service
- Stone Work
- Tractor Service
- Brushhogging
- Mulch
- Firewood



724-730-3977

**Quality Service, Guaranteed!**

Experienced • Fully Insured • PA116962  
email: turkeyrunlandscaping@gmail.com

••• Excavator Services •••

## These Slow-Cooker Beef Tacos Are Too Good To Be True

It's finally time to share my family's favorite "Too Good To Be True Slow-Cooker Beef Tacos" recipe. Passed on by word of mouth from one neighbor to another, it's an easy-to-remember recipe that I've just never taken the time to write down.

Simply put: "Place pot roast sprinkled with taco seasoning in a slow cooker. Set on high and cook 5-6 hours. Spoon tender, shredded beef into warm soft taco shells and add favorite fillings." That's it! No-fail, no-fuss cooking that our busy lifestyles demand whenever we want to gather friends together for a robust and tasty evening meal. Here are the details:

### SLOW-COOKER BEEF TACOS

Serves 6

- 2-1/2- to 3-pound boneless beef chuck pot roast, trimmed of fat
- 1-ounce package taco seasoning mix, such as the Old El Paso brand
- 1 medium onion, peeled and sliced (optional)
- 12 flour tortillas
- Toppings according to taste: cilantro, chopped tomatoes, shredded cheddar cheese, sour cream, guacamole, salsa, and a squeeze of lime juice



Sprinkle both sides of the meat with seasoning mix. Reduce the amount according to taste. Place meat in slow cooker. If using onion, spread slices evenly over the meat. (No need to add water.)

Cover, set on high, and cook for 5-6 hours, or until meat is tender and easily falls apart. Remove from slow cooker with a large slotted spoon.

Using two forks, shred the beef into a large bowl. Add onion and remaining warm juices from the slow cooker. Toss lightly to keep moist. To serve, spoon meat into warm taco shells. Add favorite toppings.

Extra Idea: For a spicy pot-roast dinner, after 3.5 hours in the slow cooker, add 6 peeled and quartered potatoes and 6 medium carrots, halved crosswise and lengthwise, on top of the meat. Add pepper and 1/4 teaspoon of salt. When meat and vegetables are tender about 2 hours later, remove meat and vegetables with a slotted spoon and place on a serving platter. Spoon drippings over meat and serve with a fresh green salad.

©2024 Donna Erickson. Distributed by King Features Synd.

DONNA ERICKSON'S

**BEST  
BITES**



**2024 QUARTERLY JOB FAIRS**  
 Hosted by  
**PA CareerLink® Lawrence County**



**Thurs., October 17 • 10am-2pm**  
**PA CareerLink® Lawrence County**  
 101 South Mercer St., Suite 101  
 New Castle, PA 16101

[www.TinyUrl.com/JobFairSRC](http://www.TinyUrl.com/JobFairSRC)  
 For more information, contact Colleen Chamberlain at [CChamberlain@WCJP.org](mailto:CChamberlain@WCJP.org)

**Pennsylvania CareerLink**  
 The auxiliary aids and services are available upon request to individuals with disabilities. Equal Opportunity Employer/Program. For more information about programs and funding, visit: <https://www.WCJ.org/resources/stevens/>

A proud partner of the  
**American Job Center**  
 network

**TOOL SUPERMARKET:** Tool Pickers, Traders, Buyers, Importers, Sellers, Recyclers. New/Used Tools, Machinery and Contractor's Equipment. Woodworking, Metalworking, Mechanics, Industrial, Tradesmen, Hobbyists, Collectors, Antique to Modern/Parts/Rentals/Service/Advice. "Everybody Uses Used Tools." Free Flyer & Used Tool List; call 1-800-783-4766 <sup>10-25</sup>

**8N TRACTOR,** with extras, runs great, exc. cond., \$4,000 obo; 412-277-6366 <sup>10-18</sup>

**GEORGE® by Mark Szorady**



©2024 Mark Szorady. Distributed by georgetoon.com.

**Tanner's Lawn Care, LLC**  
 Since 1998  
 Fully Insured  
 PA155328

**724-944-5531**  
**724-591-6042**

- Fall Leaf Removal
- Snow Removal
- Weekly Lawn Mowing
- Landscaping
- Shrub Maintenance
- Brush Hogging
- Accepting New Clients
- Snow Removal
- Commercial
- Residential

— R. Buckminster Fuller  
 butterfly.  
 you it's going to be a  
 caterpillar that tells  
 There is nothing in a  
 answer

**CryptoQuote**

**Metal & Shingle Roofs, All Gutter Services**  
**Walk-In Shower, Vanity, Flooring, Kitchen, Siding, Soffit, Fascia, Electric & Plumbing, Decks and Repairs, Garages, Insulation: Attic, Wall, Ceiling**

**Home Zone, Inc.**  
 Any and All Remodeling  
 Senior & Military Discount  
**724-944-7779**  
 PA079817 • BBB

**CryptoQuote**  
**AXYDLBAAXR**  
 is **LONGFELLOW**

One letter stands for another. In this sample, **A** is used for the three L's, **X** for the two O's, etc. Single letters, apostrophes, the length and formation of the words are all hints. Each week the code letters are different.

CADVD ZQ LFCAZLY ZL P  
 SPCDVOZXXPV CAPC CDXXQ  
 JFB ZC'Q YFZLY CF RD P  
 RBCCDVTXJ.  
 — V. RBSGKZLQCDV TBXXDV

©2024 King Features Synd., Inc.

Desk, all real wood, 44" wide, 18" deep, 3 dove-tailed drawers on left and one above knees, \$175; 724-443-2919

Black & Decker table-top jig saw \$50; 724-658-4334

Visit CityRescue Mission.org to find out how you can help those in need in our community.

**5 GALLON** Carboys \$15 ea. Corker Floor model \$40; 724-758-9958

**Home & Office Cleaning**

- Fully Insured
- Custom Pricing
- Free Estimates
- Results Guaranteed

25 Years of Experience  
 Local, Veteran & Family Owned & Operated

**AnitaCleaner.com**  
 724-546-4478  
 (Call or Text)



**CASH FOR Clunkers,** running or not, fast, free pick up; In Search of project vehicles that need work; 724-813-5480

For Sale: Hamilton Beach stand/ranch mixer Sunbeam Deluxe Mix Master stand mixer \$40 for both; 724-714-9875

**NEED STORAGE** space for your treasures, furniture, or vehicle? See our Rental Section on page 23 for available storage space rentals.

**3 D's Produce Farm & Greenhouse**



• Mums • Pumpkins  
 • Gourds • Cornstalks

Peppers, Garlic, Onions, Winter Squash, Cabbage, Potatoes, Zucchini

1605 Mohawk School Rd., Edinburg  
 Mon-Sat. 10-7, Sun. 10-5 • 724-730-9954

FMNP, SNAP, EBT, Phresh Vouchers Accepted

**DON'T WAIT!**  
 Call Now to get on the Schedule.

**Thomas Byler & Sons Roofing Contractors, LLC**



434 Donation Rd., PA006045  
 Carlton, PA 16311

**Call or Text John 724-699-6858**

**4<sup>th</sup> Generation Craftsmen**  
**Old World Craftsmanship**  
**New World Innovations**

- New Roofs • Re-Roofs
- Lifetime Shingles and 40 Year Metal

Owens Corning Certified Preferred Contractor

Shop Local. Hire Local.  
 Support Local!

**VINYL SIDING and Windows installed!** Call Chris Byler, 724-202-9747, 216-469-0322 cell, PA146758 <sup>10-25</sup>

**YES...** you can list your items priced over \$200, or multiple items in one ad. Call 724-654-5529 and use debit/credit card or Mail in, with payment, using the ad blank on page 15.



**SUNBELT RENTALS**

**EVERY SIZE TOOL FOR ANY SIZE PROJECT**

Sunbelt Rentals is your one-stop source for tool and equipment rentals. Whether you need construction equipment or smaller tools, let us help you finish the job.

Visit our New Castle location at  
 3587 Clover Lane, New Castle PA, 16105 • 724-658-2400

©2024 Sunbelt Rentals Inc. | 7084-0874

**Homeowners Welcome**

**\*\$500 OFF**  
Custom Amish Built  
Decks. Treated and  
Composite  
Penn Roofing & Siding  
Group, LLC

**PENN-OHIO**  
**ROOFING & SIDING GROUP, LLC**

\*Offer is valid on Composite Only. Must  
present offer at time of estimate. Not  
valid with any other offer or discount.

ROOFING • SIDING • GUTTERS • DECKS • ROOF RESTORATION & REPAIR

724-877-7172 | www.pennohiorc.com

PA183469

GOOGLE  
GUARANTEED

**DAILY SPECIALS**  
that are priced fairly

**Brown's  
Country  
Kitchen**

We Offer  
**Homemade  
Soups  
and Pies!**

Ellwood-Portersville Rd.  
Portersville, PA  
724-368-3227  
Open Daily 7am-8pm

Follow Us on Facebook

B	A	M	O	P	T	S	B	A	I	L
U	N	A	B	E	A	U	R	S	A	
G	N	N	E	A	R	P	R	C	A	S
S	O	N	N	Y	C	O	R	L	E	O
			E	E	E	E	E	I	N	
T	R	E	A	D	R	M	N	P	A	S
S	O	A	P	P	I	E	M	O	L	T
P	O	T	S	R	O	D	A	I	S	Y
			S	H	O	S	I	S		
S	U	N	N	Y	C	A	M	E	H	O
A	C	A	I	E	R	A	S	R	E	X
C	L	I	P	E	L	L	E	Z	A	P
K	A	L	E	D	O	L	L	O	T	O



"Well, are you going to ask him for directions or not?"

**Airless Spray Painting**  
and Pressure Washing Equipment

**Sales and Service**

We serve contractors,  
and do-it-yourself homeowners.

**RENTALS \$59.95 per day**

**JAMISON'S AIRLESS PAINT SYSTEMS**  
Jim and Kathy Jamison  
125 Grandview Rd., Ellwood City • 724 758-6036

**HOVER ROUND** portable wheelchair, needs battery, selling due to death, \$350 obo; 724-494-8284

**BUYING GUITARS,** saxophones, accordions, old amps, pedals, drums, horns, synthesizers, electronics/tubes, banjos, violins, most older musical instruments. Local pick up, Mike 330-367-7100

**Briar Brook Barn**  
Unique, Authentic,  
Refurbished

Home Decor, Antiques,  
Handcrafted Goods,  
& More!

Sat. and Sun., Sept. 14 & 15  
Rain or Shine • 10:00am-4:00pm  
Food Truck and Coffee Vendor  
Amish Donuts, Saturday Only

330 Eastbrook Neshannock Falls Rd.  
New Castle, PA 16105 • Look us up on Facebook!

**Now Open**

At Our **NEW**  
Neshannock Location  
3208 Wilmington Road  
Let's Celebrate!

2506 Ellwood Rd.,  
Shenango Township 724-656-5141  
3208 Wilmington Rd.,  
Neshannock Twp. 724-657-2901  
225 5th Street,  
Ellwood City 724-201-0999

Download our El Canelo App.  
Visit our New Website: El-Canelo.com

**DOORDASH**  
**Uber Eats**

**COUPONS**

**\$3 Off**  
ANY PURCHASE  
OF \$20 OR MORE  
Must present coupon at time of service. One coupon per guest check. Not valid with any other offers or specials. Expires 10/31/2024

**\$6 Off**  
ANY PURCHASE  
OF \$35 OR MORE  
Must present coupon at time of service. One coupon per guest check. Not valid with any other offers or specials. Expires 10/31/2024

**El-Canelo**  
FAMILY RESTAURANT

## Strange But True

by Lucie Winborne

- The first baseball caps were made from straws and worn by the New York Knickerbockers in 1849. A few years afterward, the first merino wool baseball caps were put into circulation.
- The Karni Mata Temple in Deshnoke, India, is home to 20,000 rats who are believed to be descended from an incarnation of the Hindu goddess Durga.
- Thought for the Day: "History, despite its wrenching pain, cannot be unlived, but if faced with courage, need not be lived again." – Maya Angelou

©2024 King Features Synd., Inc.

**Kevin's**

**Window  
& Gutter  
Cleaning**

Residential ♦ Commercial

724-977-7701 PA151044

## Our Daily Bread

### Trapped in Chocolate

God is not unjust; he will not forget your work and the love you have shown him.

Hebrews 6:10

READ Jeremiah 38:1-10

Two workers at a Mars candy factory in Pennsylvania fell into a large vat of chocolate. This might sound like the beginning of a joke—and perhaps a lovely predicament to chocolate lovers! But the men—though unhurt—were waist-deep in the confection and couldn't get out on their own. Firefighters ultimately had to cut a hole in the side of the vat to deliver them to safety.

When the prophet Jeremiah found himself at the bottom of a mud-filled cistern, the story was anything but sweet. As a messenger to God's people in Jerusalem, he'd proclaimed the urgency for them to leave the city because it would soon "be given into the hands of the army of the king of Babylon" (Jeremiah 38:3). Some of King Zedekiah's officials demanded Jeremiah be "put to death" because they claimed his words were "discouraging the soldiers" (v. 4). The king consented and they "lowered Jeremiah by ropes into the cistern" where he "sank down into the mud" (v. 6).

When another of the king's officials—a foreigner, no less—advocated for Jeremiah's well-being, saying the others had "acted wickedly," Zedekiah realized he'd made a mistake and ordered Ebed-Melek to lift Jeremiah "out of the cistern" (vv. 9-10).

Even when we're doing the right thing—as Jeremiah was—we might sometimes feel like we're stuck in the mud. Let's ask God to lift our spirits as we wait for His help in the troubles we face.

By Kirsten Holmberg

When have you been wronged for doing what's right? How has God sustained you?

Father God, please sustain me  
as I seek to obey You.

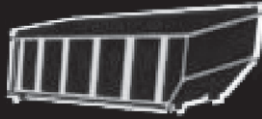
©2024 Our Daily Bread Ministries, Grand Rapids, MI. Used by permission

## Even Exchange answers

1. Leave, Lease
2. Lawyer, Sawyer
3. Entice, Entire
4. Guide, Guise
5. Berber, Barber
6. Scone, Scene
7. Awake, Aware
8. Formal, Format
9. Cheer, Sheer
10. Apron, Akron

# KILMERS ROLL-OFF LLC

If It's Green, It's Clean!



- 10 Yard Dumpster
- 15 Yard Dumpster
- 20 Yard Dumpster
- Concrete/Yard Waste Dumpster

If you don't feel like cleaning up that yard waste, **We can do it for you!**

Call for Pricing  
**724-651-2330**

Email: [kilmersrolloff@gmail.com](mailto:kilmersrolloff@gmail.com)  
Website: [www.kilmersrolloff.com](http://www.kilmersrolloff.com)

Ask about our **Weekly Special!**

## Now Here's A Tip by JoAnn Derson

• "We have a playroom, and the kids argue about who made what mess and who should clean up which toys. We made a cleaning schedule for the room, having one or two children per day responsible to clean up at the end of the day. It was a rough start, but the kids have learned to clean up as they go rather than leave a big mess for someone else. (Pay back is not kind.)" - A Mom, via email  
©2024 King Features Synd., Inc.

# DISABILITY LEGAL CLINIC



Attorney Pamela J. Miller

If You've Been **Denied Social Security Disability Benefits, Call or Stop in for a FREE Consultation.**  
**724-656-1555**

**LYNCH CARPENTER**

ATTORNEYS-AT-LAW

36 N. Jefferson St.  
New Castle

**NO Recovery NO Fee\***

\*Costs of Litigation Still Apply

• "I had to pick up a bunch of BBs that spilled in our garage. It was very aggravating, until I decided to get out my vacuum. I put a very thin sock on the end, and tucked it into the hose. I secured it with a zip tie. I was able to suck up most of the BBs, and they went right back in the container." - E.L. in NC  
• To get a couple more days out of your cat litter, clean the box out and mix in a cup of baking soda.



**NOTARY**

We accept



Sorry - *No personal checks accepted*

- Licensing
- T-Plates
- Titles
- Motor Vehicles
- Trailers
- ATVs
- Boats
- Snowmobiles
- Online

**1103 Sunny Ave. New Castle**  
corner of Atlantic Ave.

Mon.-Sat. 9am-4:30pm  
other times by appointment

**724-658-2931**  
**724-971-1310**

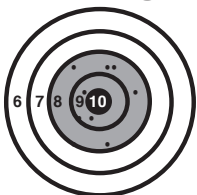
# King Crossword

## Best Stump Grinding

Accepting Credit Cards  
**724-312-2672**  
PA100062

• If your vacuum has a paper filter, spray it with your fave perfume or essential oil. It will blow into the air as you vacuum, leaving behind a pleasant scent.

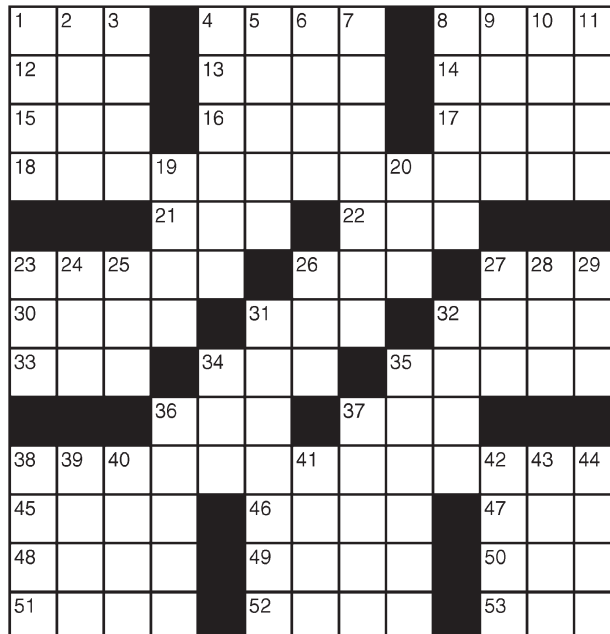
## Randall Guns Always On Target



717 OLD Ellwood-Zelenople Rd., Ellwood City  
**724-758-2102**  
Outside Ellwood City Area, Toll Free  
1-888-200-9505  
Mon.-Fri. Noon-4pm and 6:30-9:00pm,  
Sat. Noon-4pm  
[rguns@zoominternet.net](mailto:rguns@zoominternet.net)  
[www.randallguns.com](http://www.randallguns.com)

### ACROSS

- 1 "Kapow!"  
4 Makes a choice  
8 Release money  
12 Actress Merkel  
13 Boyfriend  
14 Celestial bear  
15 MSNBC rival  
16 Lawman Wyatt  
17 Some HDTVs  
18 James Caan's role in "The Godfather"  
21 Shoe width  
22 Aachen article  
23 Tire pattern  
26 LBJ's successor  
27 Faux —  
30 Shower bar?  
32 Shed  
33 Cauldron  
34 Hit show letters  
35 Symbol of freshness  
36 HBO rival  
37 Serena, to Venus  
38 Grammy-winning Shawn Colvin song  
45 Exotic berry



- 46 Eventful periods  
47 Actor Harrison  
48 Brisk pace  
49 Vogue rival  
50 Microwave  
51 Curly cabbage  
52 Ken or Barbie  
53 Oklahoma tribe  
4 Heeded  
5 Quiet partner?  
6 Tropical tuber  
7 Paramount  
8 President Martin Van —  
9 Not pizzicato  
10 "This — outrage!"  
11 Zap with a beam  
19 Tide variety  
20 Author Yutang  
23 Recipe abbr.  
24 Kanga's kid  
25 Have dinner  
26 Carnival city  
27 Luau dish  
28 Gore and Pacino  
29 Farm pen  
31 "Continue!"  
32 Prepare potatoes  
34 Bashful  
35 Truck fuel  
36 Marsh bird  
37 Lowercase  
38 Bag  
39 Pac-12 team  
40 Hammer target  
41 Woody's son  
42 Rice-shaped pasta  
43 Vegan's no-no  
44 Big fair, for short

### DOWN

- 1 Tampa Bay team, for short  
2 — Domini  
3 "Death in Venice" author

# HENLEY'S

Truck Cover Store



**New & Used Truck Caps**



**724-652-1763**

Just Like Cats & Dogs by Dave T. Phipps



• There are many uses for empty Tic Tac containers. Here are three: Wrap with pretty paper and use as a tiny vase for a single-stem flower. Or, separate small scrapbooking supplies in them. Last, thread two needles with a length of thread — one white and one black. Poke the needles through a small square of paper and wrap the thread around the paper. Slip into the container for a travel sewing kit.  
• Use a turkey baster to "squirt" pancake batter into your frying pan. Mix the batter as normal and unscrew the top of the baster to load. You can use it to make letters for fun kids' breakfasts. No drips!

• **STRAW** •  
Square Bales  
\$5.00 each  
**Boak Farm**  
724 924-2396

# Classified Service Directory

Service and Professional • Merchants and Businesses

## CHILDREN'S GIFTS

**NANA's Tuggin' Tags.** Children's Cloth Books, Crinkle Books, Baby Essentials Sets. Now at Anchor Handcrafted & Collectible Shoppes, 4466 Mitchell Rd., New Castle, PA 16105 Wed.-Fri. 11-6, Sat. 10-3

## CHILDREN'S SUPPLIES

**PREGNANT? Child age 3 or under?** Free parenting tips, Parenting Shop Mommy Dollars/Dad Cash! Promises of Life, New Beginnings, New Castle, Slippery Rock, Mercer, Butler. Text: 724-951-2068

## CHURCHES

**NEW HOPE WESLEYAN CHURCH**  
Pastor Gary DeWitt, 2300 Pulaski Rd., New Castle, 724-658-3019  
Sun. School 9:45am, Sun. Worship 10:45am; Hour of Power Prayer 3pm; Wed.: Youth & Children 6:15pm, Adult Study 6:30pm; Grief Share Class, call for info

**FIRST ALLIANCE**  
111 Mission Meade Dr., Rte. 18 N., Nesh. Twp. Sun.: 9:30am Sun School, 10:45am Worship; Wed.: 11:00am Prayer, 6:30pm Men's & Ladies' Bible Study, 6:30pm Youth Group; 724-654-4512  
Pastor John McCready  
www.firstalliance.org  
facebook@1stalliance

## CHURCHES

**TRINITY EPISCOPAL CHURCH,**  
Sun. Worship 9:00am, live-streamed, 212 N. Mill St., New Castle, 724-654-8761  
trinitynewcastle.org

### THE WAY

Join Us Sundays: Worship 10am; Wayside Emmanuel Church, 4437 Mitchell Rd., New Castle, 16105  
Pastor Bryan Warner  
724-652-6439

**Classified Service Directory:** Starting at \$6.25/wk. (\$81.25 total) for a 13 week run. No changes, no artwork, deadline 5pm Tues. 724-654-5529

## HANDYMAN

**MOST HOME REPAIRS,**  
Senior Discounts, Free Estimates, Insured, PA112648  
724-657-4567

## HAULING

**GENERAL HAULING**  
We Haul Trash, Clean Cellars, Attics, Garages. Haul Brush, Topsoil, Limestone, Coal & Buy Scrap; Jesus Loves You  
724-651-0007

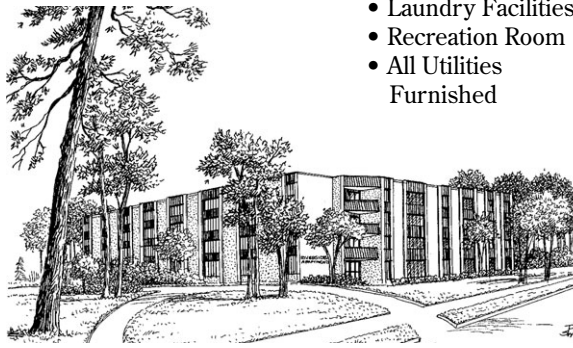
**BUYING CLASSIC** Cars, Trucks, SUVs \*\*American and Foreign\*\* Any Condition. Buying entire car collections. \$\$\$PAYING CASH\$\$\$ Please call 717-577-8206  
KRMiller1965@yahoo.com

## Someplace Special Riverside Apartments

- Conveniently Located • Within walking distance of the stores and restaurants in Downtown New Castle



125 W. North St.,  
New Castle  
724 658-0520



### Senior Citizen Complex

- Main Floor Lounge Area
- Full Security Door System
- Basement Storage Compartments
- Distress Signal For Each Apartment
- Parking
- Full Kitchen
- Elevator Service
- Laundry Facilities
- Recreation Room
- All Utilities  
Furnished

**Rent A Large Efficiency Apartment**  
**\$385**  
per month,\*  
includes utilities

**1 Bedroom Apartment**  
**\$475**  
per month,\*  
includes utilities

\*as available

**DENTAL INSURANCE** from Physicians Mutual Insurance Company. Coverage for 350 plus procedures. Real dental insurance - NOT just a discount plan. Do not wait! Call now! Get your FREE Dental Information Kit with all the details! 1-877-553-1891  
www.dental50plus.com/macnet #6258

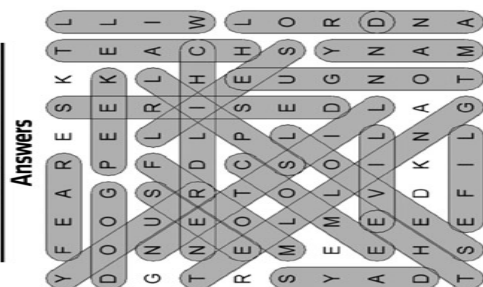
**LOVE AUCTIONS?** Live for the treasure hunt?? See pages 8 & 9 for this week's listings! There are quite a few to sate your.

**C. Drake & Co.** Established 1988  
Residential and Commercial

Tree Removal/Trimming  
Shrub Removal/Trimming  
Stump Removal  
Lawn Care • Fall Clean-up

Call Tim "Tubby" Drake  
724-656-1479 or 724-730-3325  
c.drakeandco@comcast.net • PA085677

BIBLE WORD SEARCH



WBB Ad Blank/Directions are on Page 15

## SHOOTS

**HAM/MEAT** Money Shoots: every Tuesday Oct. 22-Nov. 26, 7pm, field guns only, .680 choke, Bessemer Rod & Gun Club, 602 N. Main St., Bessemer 11-22

**MEAT / MONEY** Shoots: Every Thursday, Oct. 3 - Nov. 21, 7pm, field guns w/680 choke only, 32" barrel max, \$25 round; Shenango China Hunting & Fishing Club, 2155 Fording Rd., New Castle 16105 11-15

**Advertise** your shoot here! **1-20 words:** \$6.00 per week, prepaid; **Over 20 words:** 25¢ per word, per week, prepaid. (email or website: +4 words, phone #: +1 word) Deadline 5pm Tues.

### Country Roads Mobile Home Park

Trailers Available  
**Shenango Twp.**  
Starting at \$850/mo. includes water, sewage, garbage, background check;  
724-944-1477

**GOT \$6.00?** Your rental ad could have been HERE! Call the office before 5:00pm on Tuesday to place an ad just like this! 724 654-5529

**FOR RENT:** West Pittsburgh Trailer, \$850 mo+; Background Check Required; 724-944-1477 10-25

Efficiency Apt.  
**Ellwood City**  
2nd floor, \$380 mo. plus electric.;  
**New Castle**  
1-2 Bedroom Apt. \$530 mo. plus electric;  
724-657-7319

**Oak Leaf Gardens**  
1-2-3 Bedroom Apartments  
1139 Pin Oak Dr., New Castle  
Phone: 724 652-6632 • Fax: 724 498-0428  
www.OakLeafGardenApts.com

**Vista South and Sheridan Apartments** 62 and older  
**Senior/Disabled Living Only**  
1 bedroom, utilities included  
Wait List Open • 724 658-6181 • New Castle

**Westview Terrace**  
2, 3, & 4 Bedroom Townhouses  
910 S. Grant St., New Castle • 724 510-0190

All: EHO and HUD.  
Rent and Deposit based on income.  
Must be able to pass background check.



**JOB HUNTING?** See our Hiring Section on page 9 for job openings!

### Porta Potty Rentals

Schedule now for outdoor events!  
724-699-8935  
or 724-699-3871

Lawrence County, PA  
District Attorney's Office  
**Drug Task Force**

### Make an Anonymous Tip

Toll-Free 855-684-6116  
or Online at  
www.LawrenceCountyPA.gov/submit-a-tip

## Unique Gifts by Local Artisans

**Anchor Handcrafted & Collectible Gift Shoppes**

\*Birthday \*House Warming  
\*Shower \*Holiday \*Just Because  
**35+ Artisans**  
offering new, handcrafted, repurposed, antique, vintage or collectible items, decor and gifts for all ages of men, women and children!!

4466 Mitchell Rd., New Castle, PA 16105 (Pet Parlor Building)  
Open Year 'Round: Wed.-Fri. 11am-6pm, Sat. 10am-3pm

Join Us  
**Sunday, Oct. 13**  
**Worship 10:00am**  
"Miracles of Jesus"  
All Stars for Jesus  
and Attended Nursery



*Pastor Bryan and Dianne Warner*



4437 Mitchell Rd.  
New Castle 16105  
724-652-6439

Wayside Emmanuel Church

WANTED! MOTORCYCLES & Mini Bikes! Antique And Classic. Honda, Kawasaki, Suzuki, Yamaha, Triumph, BSA, and other foreign models. \$\$\$PAYING CASH\$\$\$ 717-577-8206 KRMiller1965@ya.hoo.com

**Mr. Wilson We Do All**

- Trash Removal
  - Junk Removal
  - Small Demolition
- 724-698-4812**  
PA7617938

**Rental Section**



Property Management is ALL we do.

[www.RentWithPremier.com](http://www.RentWithPremier.com)

**Unlock Your Property's Potential with Professional Management Services!**

Are you tired of dealing with tenant issues and maintenance headaches? Let us take the stress off your shoulders! Our professional property management services offer:

- ✓ 24/7 Support: Rest easy knowing we're always here for you and your tenants.
- ✓ Prompt Communication: Stay informed every step of the way with transparent communication.
- ✓ Expert Guidance: Benefit from our industry knowledge and experience.
- ✓ Legal Peace of Mind: Stay compliant with ease!
- ✓ Time Freedom: Enjoy more free time while we take care of the day-to-day operations.

Say goodbye to property worries and hello to peace of mind. **Contact us today** for a stress-free property ownership experience!

**724-404-RENT**

7 E. Maitland Ln., New Castle, PA 16105



**PREMIER**

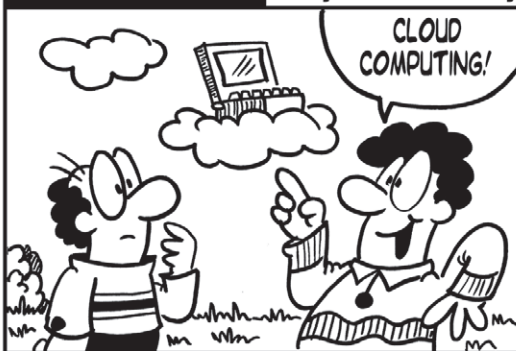
**PROPERTY MANAGEMENT SERVICES**

**UNI Home Solutions We Buy Houses**

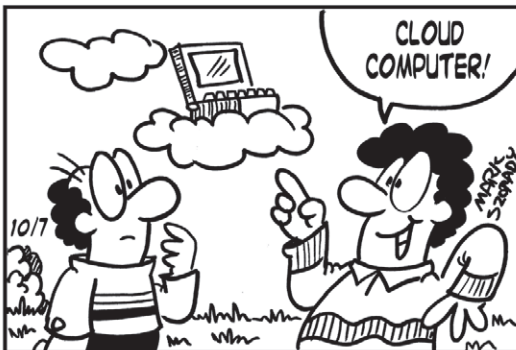
Call Dave "The We Buy Guy"

**724 654-5656**

**DOUBLE TAKE** By Mark Szorady



FIND AT LEAST SIX DIFFERENCES BETWEEN CARTOONS!



ANSWERS: 1. HAIR LONGER 2. MOUTH DIFFERENT 3. CLOUD COMPUTER MOVED 4. SHIRT STRIPES DIFFERENT 5. 'COMPUTING' CHANGED TO 'COMPUTER' 6. BUTTON MISSING

©2024 Mark Szorady. Distributed by georgetoon.com.

**HENLEY'S TRUCK ACCESSORY STORE**

- Hitches
  - B&W: 5th Wheel & Gooseneck
  - Wiring • Installation
- 724-652-1763**

DON'T LET the stairs limit your mobility! Discover the ideal solution for anyone who struggles on the stairs, is concerned about a fall or wants to regain access to their entire home. Call AmeriGlide today! 1-844-317-5246



**Garage Doors and Openers**

Residential and Commercial, Repairs PA52610

**724-856-6019**

[mcoverheaddoor.com](http://mcoverheaddoor.com)

Like Us On Facebook!

We Stock Most Standard Sizes

**50% OFF Your 3rd Month When You Rent Today!**

We Offer:

- Drive Up Units
- Easily Accessible
- Variety of Unit Sizes
- Roll Up Doors
- Online Payments

**HARBOR STORAGE**

**724-585-8288**

Harbor Village Drive, Edinburg, PA 16116

Call Today to Reserve A Unit!

**SPRUCE ST. STORAGE**  
**724-651-0140**

Well-Lit  
10x18 \$95/mo  
Car Storage Available

Owner Operated • Call for appointment  
Pics/Info: [www.SpruceStreetStorage.com](http://www.SpruceStreetStorage.com)  
412 Spruce St. • East New Castle

**METAL ROOFING** installed! Call Chris Byler, 724-202-9747, 216-469-0322 cell, PA146758

METAL ROOFING & Siding for Houses, Barns, Sheds, Liner. Closeouts, Returns, Seconds, Overruns, etc. Discount Prices. Made in Ephrata, PA. Email: [sales@7174455222.com](mailto:sales@7174455222.com) 717-445-5222

**Hoffmeier Self Storage**  
**724-333-6870**

Outside Storage Available!  
River Rd., Ellwood City  
Rte. 65 - Between Ellwood City and New Castle

Rates Starting at  
**\$1.00**  
per day

**New and Used TIRES**

**WHEN EXPERIENCE MATTERS**

- Repairs • Alignments
- Oil Changes
- Steering & Suspension
- State Inspections
- Exhaust • Brakes
- General Maintenance



Over 30 Years Experience  
844 E. Wash. St., New Castle, PA  
724 923-9477  
Mon.-Fri. 8am-6pm, Sat. 8am-2pm  
Owner: Carl Hairhoger



## REDDOT TRAINING RANGE

Gun Sales • Indoor Range • Training

**Lawrence County's only public indoor shooting range and training facility.**

### SALES:

Firearms, Ammunition,  
Firearm Accessories

### TRAINING:

- Firearms, Medical
- Range Memberships available (but not necessary)
- Machine Guns Available
- Firearm Transfers

**25-Yard  
Indoor Shooting  
Range  
with 7 Lanes**  
**Police Officers get  
FREE Range Time**

**Redeem this ad for \$5.00 Off your Range Fee!**

2820 Wilmington Rd., New Castle, PA 16105 • 724-202-7376  
Tues.-Sat. 12noon-8pm, Sun. 12noon-6pm  
*Note: all shooting stops 30 minutes prior to the listed closing time.*

## Kovels

Antiques and Collecting  
by Terry and Kim Kovel

### KOVEL'S TIPS

1. TIP: To get rid of mildew on wooden furniture, wipe the wood with a cloth dipped in a mixture of 1 cup of water, 1 tablespoon of bleach and 1 tablespoon of liquid dishwashing detergent. Then wipe the wood dry.
2. TIP: Stains on porcelains can be removed by soaking them in a mixture of 2 tablespoons denture cleaner and 1 quart tepid water.
3. TIP: Wash art glass in lukewarm water with a little softening agent and some mild dishwashing soap.
4. TIP: When repairing furniture, it is best to re-glue before you refinish.

©2024 King Features Synd., Inc.

## Repossession Alert!

### HAS YOUR VEHICLE BEEN REPOSSESSED FOR MISSED PAYMENTS AFTER 2018?

You still may be entitled to a very substantial sum of money and improved credit



**FREE Legal Advice 1-800-601-0808**

Results vary. No guarantee nor expertise represented. Shenkan Injury Lawyers, LLC. - Other cases accepted.

## Custom Boat Covers

### EASTBROOK TARP SHOP

888 Bowden Rd., New Castle, PA 16105  
Mon., Wed., Fri. 8-5

LINCOLN ELECTRIC AC/DC welder and Eastman 200 Tig Welder with cart, many extras, \$1,300 for both; 724-752-9415

COMPLETE 3 piece Ashley living room furniture, with coffee and 2 end tables, lamps, pictures, \$175 obo; 724-498-5918 <sup>10-18</sup>

## ROZZI BUILDERS

- Concrete Work
- Carpentry
- Patios
- Additions
- Block Work
- Basements
- Garages

724-652-2640

Free Estimates • Fully Insured



BUYER OF Standing timber or saw logs, sell direct to the mill and get paid more. Call 440-858-5447 <sup>10-18</sup>

KEVIN LORELLO Law, experienced, specializing in estates, wills, family law, and other legal matters; 724-714-6323 <sup>10-25</sup>

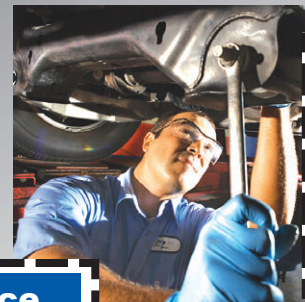
## Neely Bros. Plumbing, L.L.C.

**New Construction and Repairs**  
Drains, Gas & Water Lines, Hot Water Tanks, Electric Drain Cleaning, "No Job Too Small" Great Rates  
724-657-1144  
PA025841

## G.O. CRIVELLI AUTOMOTIVE

Rte. 18, New Castle • 724-654-7741 • gocrivelli.com

## ACDelco Service and Parts Center



### State Inspection

Fall Special  
**\$29<sup>95</sup>**

Includes Sticker. Cannot combine with any other offers. One time use only. Exp. Oct. 31, 2024



### High Quality Wipers

Fall Special  
**\$28<sup>00</sup>** Installed

Replace Front Wiper Blades. Most makes and models. Exp. Oct. 31, 2024



### Flush Service

Any Flush Service  
**10% OFF**

Includes Coolant, Transmission, Fuel Injection, Brake Fluid, Differential, Air Induction. Exp. Oct. 31, 2024

SAVE up to \$25



- Engine Maintenance
- Undercar Services
- Alignments
- Brakes
- Tires
- Engine and Transmission
- 4x4 Services
- Electrical Services
- Heating and Cooling Systems
- Transmission Service

### Oil Change

**15% OFF**  
Our Already Low Prices  
Every Make, Every Model

Includes: tire pressure check, 4 tire rotation, and FREE 27 point services inspection. Exp. October 31, 2024



### Walt's Detail Special

**\$89<sup>95</sup>**

#### Mini Detail

Reg. \$109.95 **SAVE \$30**  
Includes wash, wax, clean interior and windows.

**\$189<sup>95</sup>**

#### Full Detail

Reg. \$219.95 **SAVE \$30**  
Includes wash, buff & wax, shampoo interior, dress vinyl and clean windows.

Must have coupon to receive these prices. One coupon per household. Exp. October 31, 2024



### Senior Citizen Discount

**15% OFF\* ANY SERVICE**

Cannot combine with any other offers. \*Must be 60 or over to qualify. Exp. Oct. 31, 2024



**We Sell  
Tires**



**Rhino Linings**

**G.O. Crivelli  
40 Years In Business**